



Hamilton Terrace, St Johns Wood, NW8 £3,250 Per Month Furnished

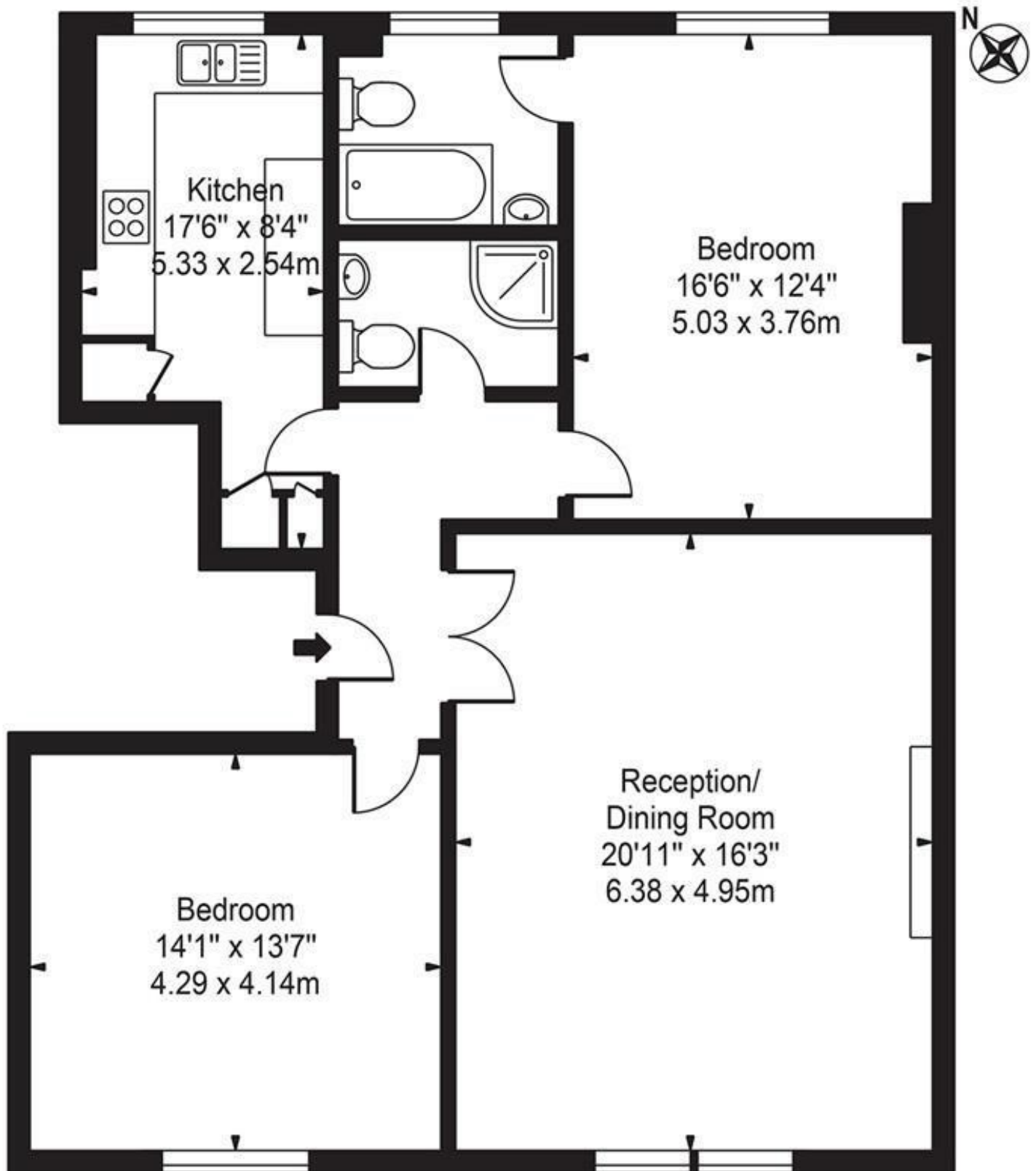
High spec 3 bedroom apartment on 1st floor within conversion, ideally located in St Johns Wood on a sought after road with permit parking.

Open plan kitchen, exposed beams, wooden flooring in reception area, 2 bathrooms and good sized bedrooms.



Hamilton Terrace

Approx. Gross Internal Area 1030 Sq Ft - 95.69 Sq M



Third Floor

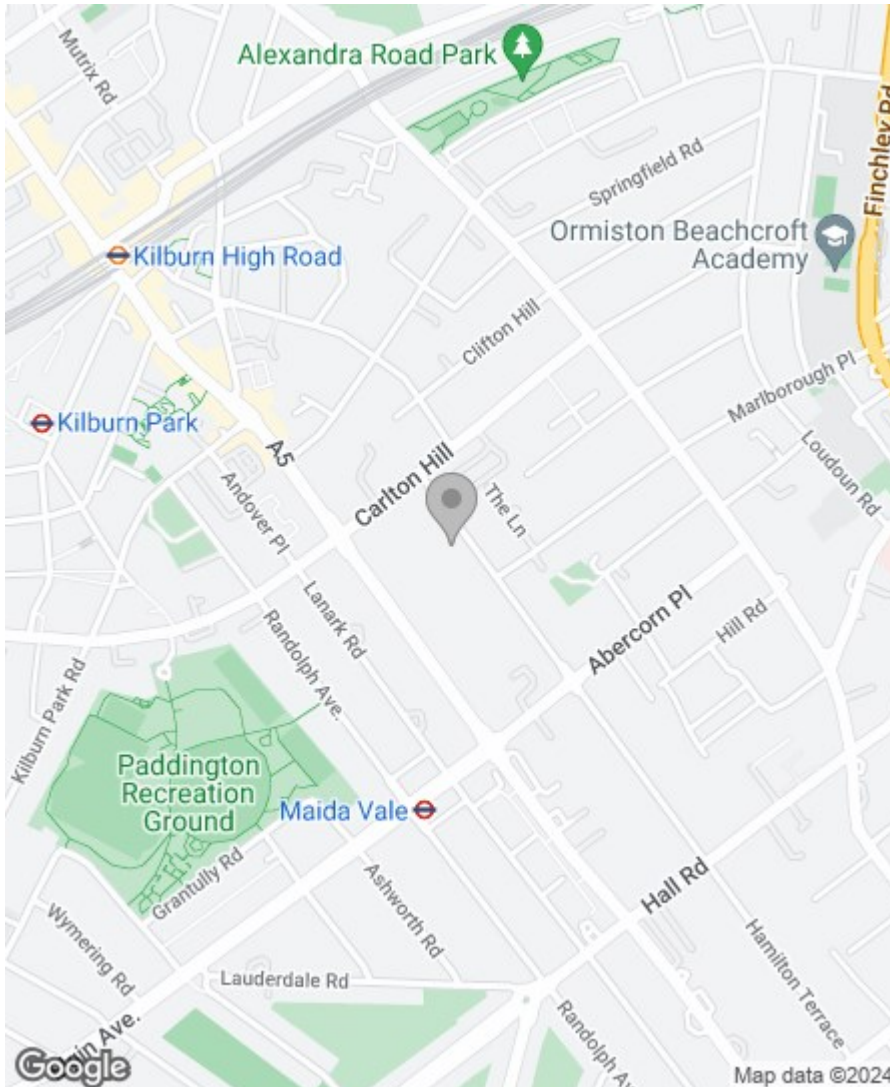
For Illustration Purposes Only - Not To Scale

Property Overview

Location	St Johns Wood, NW8
Price	£3,250 Per Month
Bedrooms	2
Bathrooms	2
Receptions	1
Council	
Tax Band	
Furnishing	Furnished

Key Features

- 2 Bedrooms
- 2 Bathrooms
- Period Conversion
- Available Now
- Great Location
- Bright and Spacious



Energy Efficiency Rating

	Current	Potential
Very energy efficient - lower running costs		
(92 plus) A		
(81-91) B		
(69-80) C		
(55-68) D		
(39-54) E	44	46
(21-38) F		
(1-20) G		
Not energy efficient - higher running costs		

England & Wales

EU Directive
2002/91/EC



Environmental Impact (CO₂) Rating

	Current	Potential
Very environmentally friendly - lower CO ₂ emissions		
(92 plus) A		
(81-91) B		
(69-80) C		
(55-68) D		
(39-54) E	38	39
(21-38) F		
(1-20) G		
Not environmentally friendly - higher CO ₂ emissions		

England & Wales

EU Directive
2002/91/EC



IMPORTANT NOTICE: All of the information is intended only as a guide to a prospective purchaser and does not constitute any part of an offer or contract. Any measurements or distances referred to herein are approximate only. Any information contained herein (whether in the text, plans or photographs) is given in good faith and cannot be relied upon as being a statement or representation of fact. Should you proceed with the purchase of the property, your solicitor must verify these details. We have not carried out a detailed survey nor tested the services, appliances and specific fittings. In accordance with current legislation we would advise you that the measurements on these particulars are imperial. The formula for conversion to metric is as follows:- 1' (one foot) = 30.4cm (centimetres), 1m (one metre) = 3'29 (feet).

