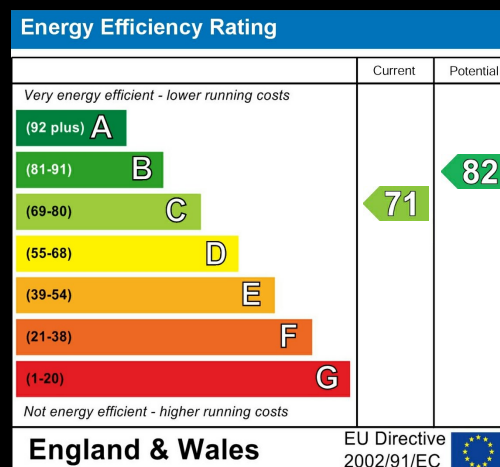
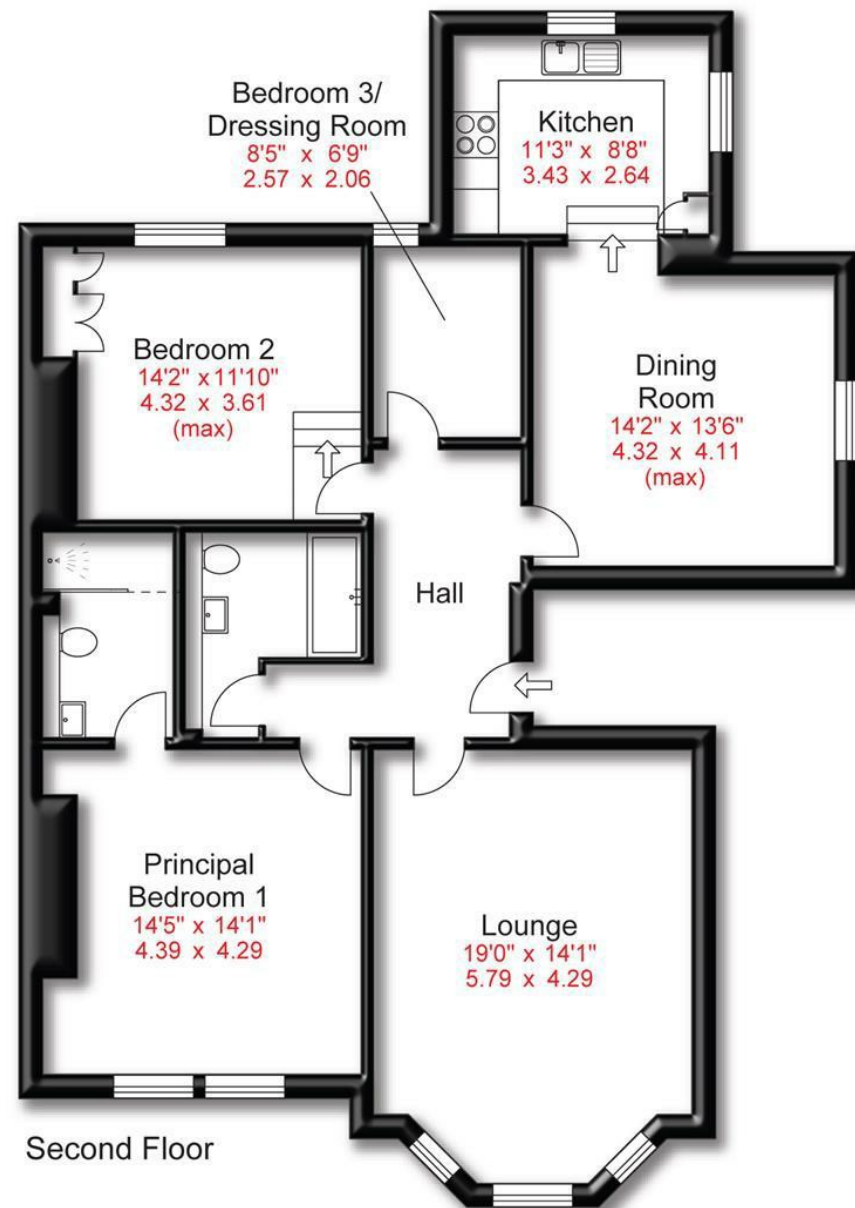


Approx Gross Floor Area = 1195 Sq. Feet



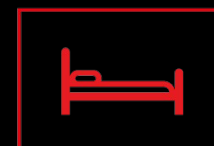
Heald Road | Bowdon  
Asking Price £625,000



SALES & LETTINGS

175 Ashley Road | Hale | WA15 9SD  
t: 0161 928 9355  
e: info@hibberthomes.com  
www.hibberthomes.com

Bedrooms 3



Bath 2



Reception 2



Off Road Parking



Area  
1195.00 sq ft



No Chain





- Superbly Proportioned First Floor Apartment
- Two Reception Rooms
- Two Bath/Shower Rooms
- Set Within an Impressive Converted Victorian House
- Desirable Location
- Three Bedrooms
- 1195 SQFT
- No Chain

A BEAUTIFULLY APPOINTED AND SUPERBLY PROPORTIONED FIRST FLOOR APARTMENT SET WITHIN AN IMPRESSIVE CONVERTED VICTORIAN HOUSE DESIRABLY LOCATED IN THE HEART OF OLD BOWDON. Private Entrance. Hall. Lounge. Dining Room. Kitchen. Three Bedrooms. Two Bath/Shower Rooms. Single Garage. Communal Gardens.

A superbly proportioned and beautifully appointed First Floor Apartment set within this impressive Converted Victorian House, superbly located on this highly desirable road in the heart of 'Old Bowdon' within walking distance of Hale Village with its range of fashionable shops, eateries and bars and Altrincham Town Centre, the facilities, the Metrolink and the popular Market Quarter.

The property offers accommodation extending to approximately 1200 square feet and has recently been refurbished to a high standard with High end parquet flooring with exquisite brass inlay, providing Two Reception Rooms, in addition to a recently refitted Kitchen and Three Bedrooms, served by Two brand new stylishly appointed Bath/Shower Rooms with underfloor heating, bookmatched tiles and beadless mitred finish, hidden storage with mirrored finish.

Externally, there is a mature Garden frontage setting and a Garage positioned to the rear with electricity supply. To the front, there is a deep, mature Garden frontage, laid to lawn for the use of the residents.

- Leasehold - 999 years - 965 remaining from 1989
- Ground rent and service charge fees are £175 per month
- Council Tax Band 'E'

