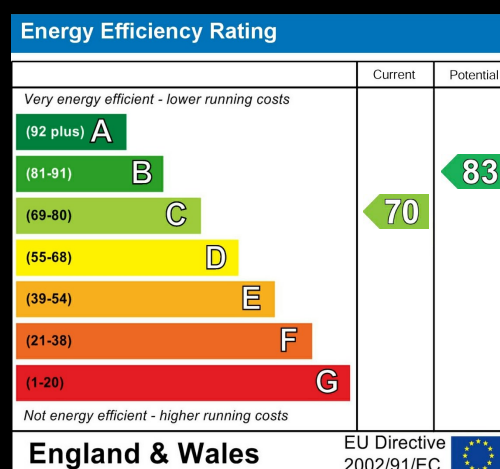
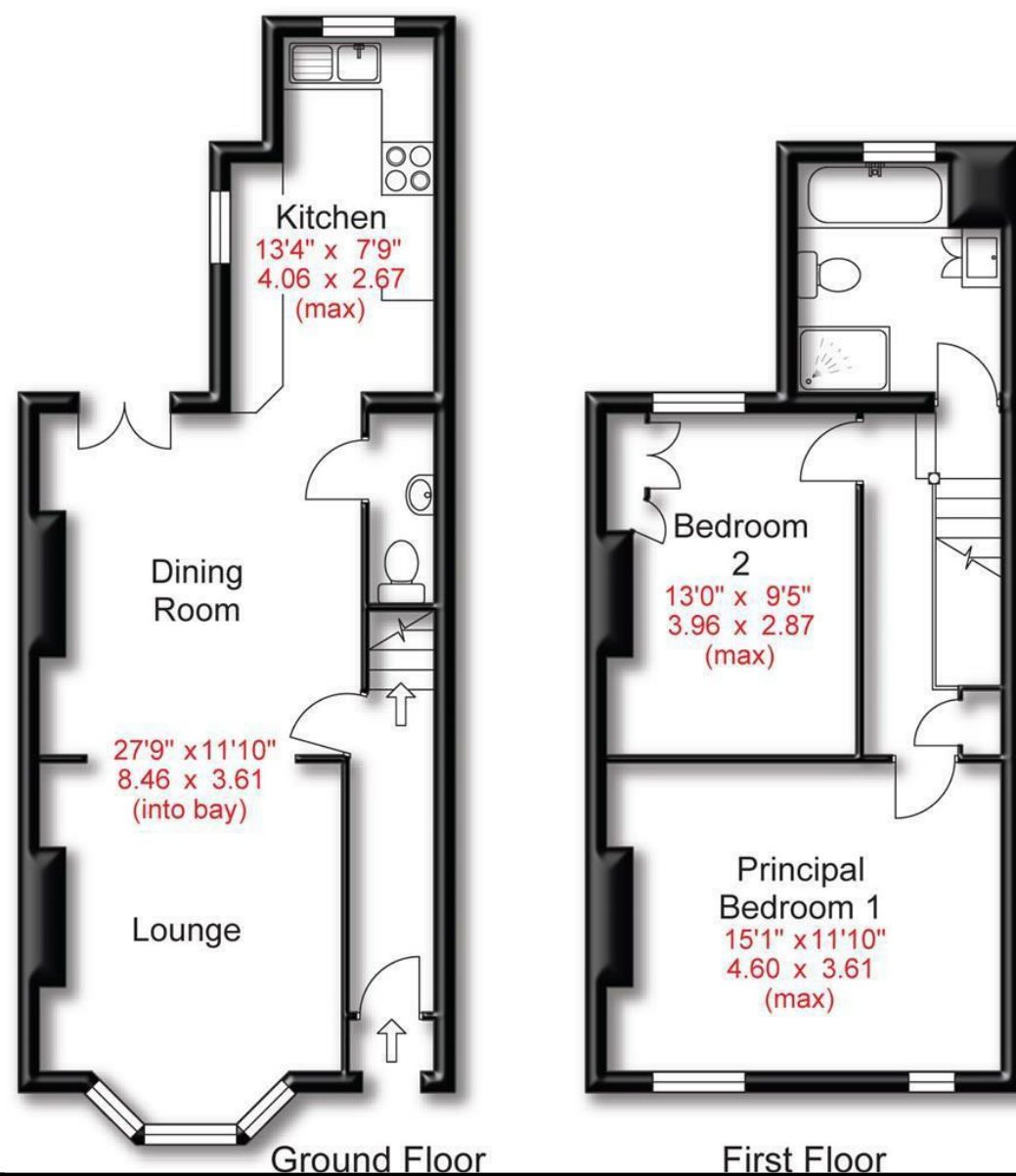


Approx Gross Floor Area = 929 Sq. Feet



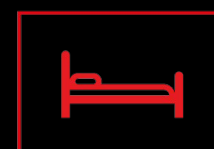
Golf Road | Hale
Asking Price £400,000



SALES & LETTINGS

175 Ashley Road | Hale | WA15 9SD
t: 0161 928 9355
e: info@hibberthomes.com
www.hibberthomes.com

Bedrooms 2



Bath 1



Reception 2



On Street Parking



Area
929.00 sq ft



Onward Chain



- Attractive Victorian Terrace
- Open Plan Living/Dining
- 929 Sq Ft
- Close To Transport Links
- 2 Double Bedrooms
- Private Garden Area
- Walking Distance to Hale/Altrincham
- Great Catchment Area

A superbly styled and improved bay fronted Victorian Terraced property within reasonable walking distance of Hale Village and Altrincham Town Centre and enjoys the open space of Stamford Park on the doorstep. The accommodation is arranged over Two Floors and extends to some 929 sq ft with a Living and Dining Room, Kitchen and WC to the Ground Floor and Two Double Bedrooms and a Bathroom to the First Floor. The property is styled to a contemporary theme throughout. Externally the property enjoys a private courtyard.

