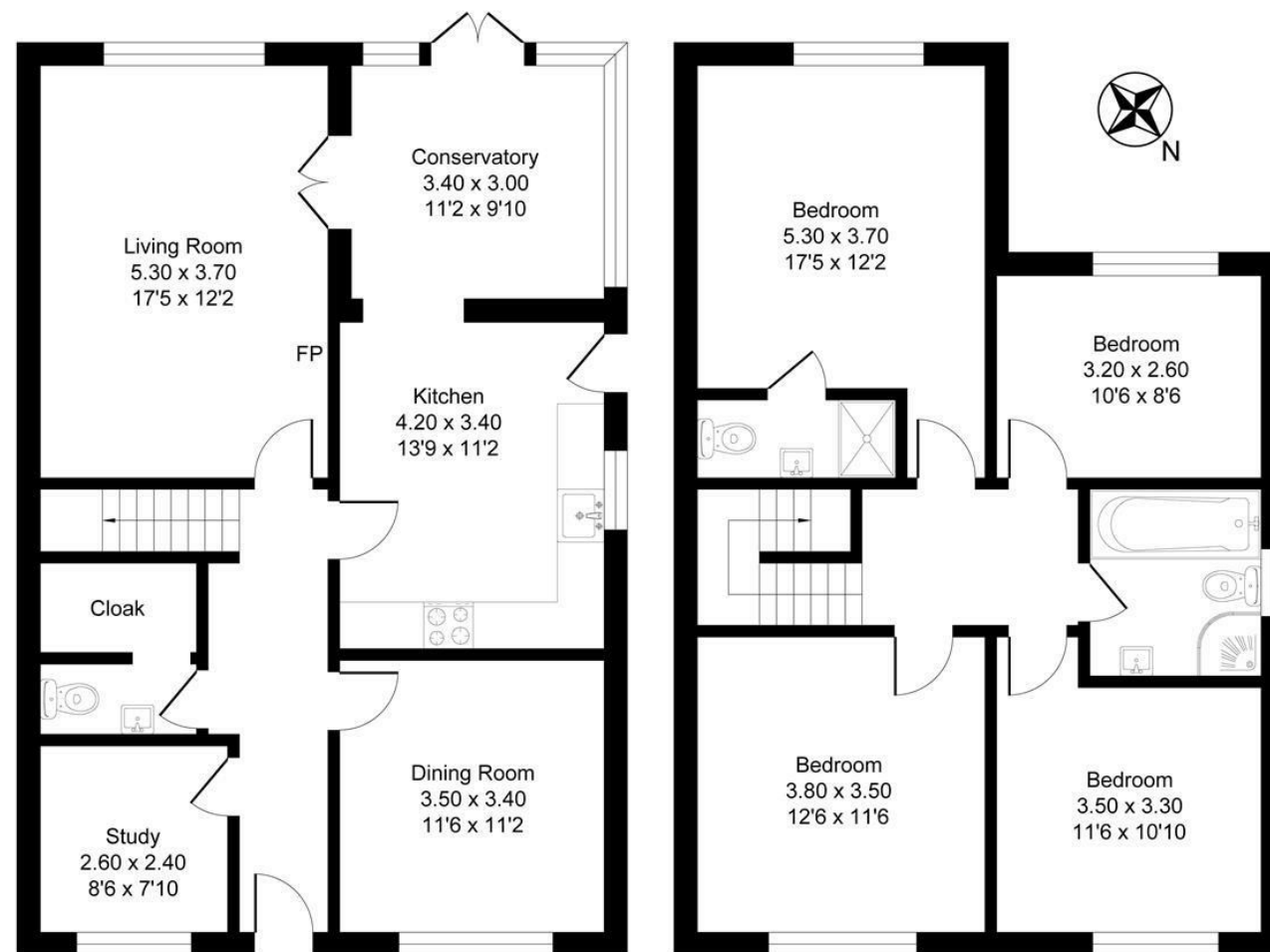


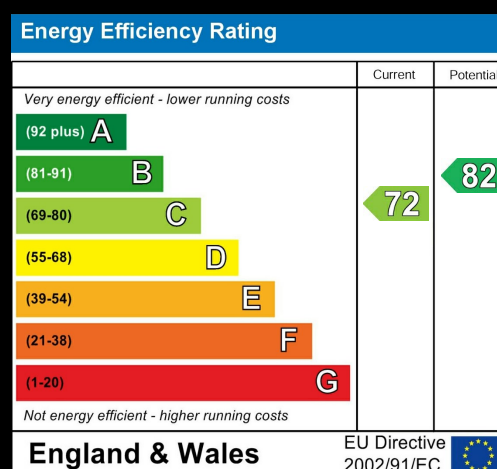
Approximate Gross Internal Floor Area = 152.0 sq m / 1637 sq ft



Ground Floor

First Floor

Illustration for identification purposes only, measurements are approximate, not to scale.



The Narrows | Altrincham  
Asking Price £850,000



SALES & LETTINGS

175 Ashley Road | Hale | WA15 9SD  
t: 0161 928 9355  
e: info@hibberthomes.com  
www.hibberthomes.com

Bedrooms 4

Bath 2

Reception 1

Parking

Area  
1637.00 sq ft





- Period Style Semi
- Four Bedrooms
- Large Modern Kitchen
- Private Garden
- Short Walk To Hale And Altrincham
- Prime Location
- Two Bathrooms
- Conservatory
- 1637 Sq Ft
- Private Road

Welcome to this charming semi-detached house located in the sought-after area of The Narrows, Altrincham. This delightful property boasts 4 bedrooms and 2 bathrooms. Spanning across 1,637 sq ft, this home provides a perfect blend of comfort and style. The spacious bedrooms are ideal for relaxation, while the bathrooms offer convenience and modern amenities.

Situated in a serene neighbourhood, this house is perfect for those seeking a peaceful retreat while still being close to all the conveniences of Altrincham. The surrounding area offers a mix of green spaces, local shops, and excellent schools, making it an ideal location for families.

Comprising; entrance hall way, dining room, study, down stairs WC and cloak room. Living room. Large, modern kitchen leading to the conservatory and out to the private garden. Upstairs there is three double bedrooms and a family bathroom, a master bedroom with en-suite. Outside there is parking and a garage. Council Tax G.

