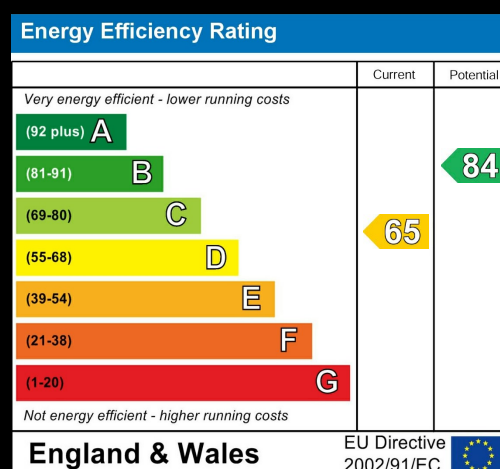
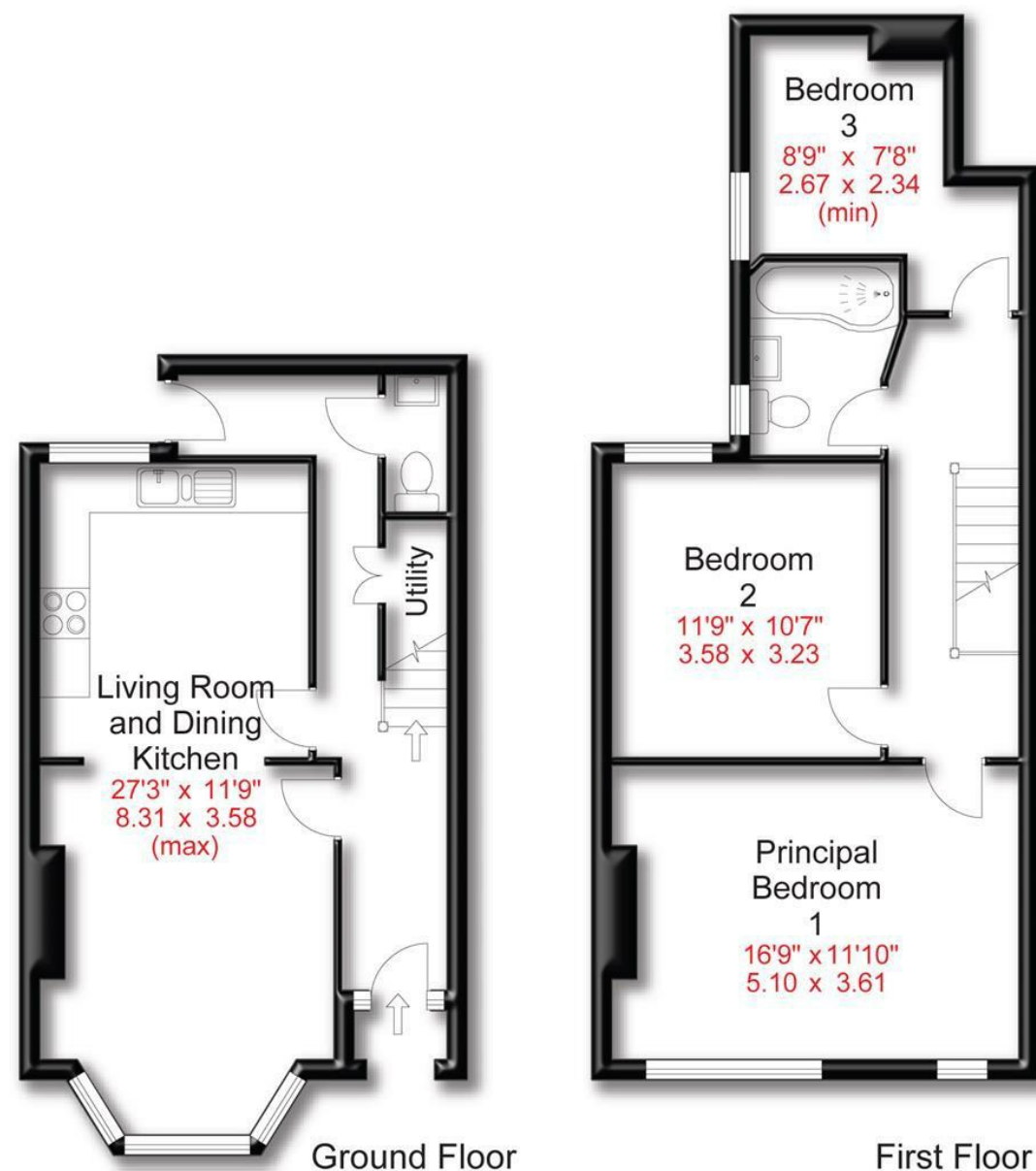


Approx Gross Floor Area = 982 Sq. Feet



Townfield Road | Altrincham  
Asking Price £485,000



175 Ashley Road | Hale | WA15 9SD  
t: 0161 928 9355  
e: info@hibberthomes.com  
www.hibberthomes.com

SALES & LETTINGS

Bedrooms 3



Bath 1



Reception 1



Permit Parking on Road



Area 982.00 sq ft



No Chain





- Semi Detached House
- Open Plan Kitchen/Dining
- Permit Parking
- Catchment To Outstanding Schools
- 982 Sq Ft
- Three bedrooms
- Private Garden
- Walking Distance To Altrincham/Hale
- Close To Transport Links
- NO CHAIN

A modern three bedroom semi detached house within walking distance to Altrincham! This property offers excellent accommodation comprising, entrance hallway, a large open plan living room and dining kitchen with a bay fronted window. Downstairs W.C. Upstairs offers a large and bright main bedroom with an original fireplace, two further bedrooms and a family bathroom. Outside there is a south east facing back garden. NO CHAIN.

