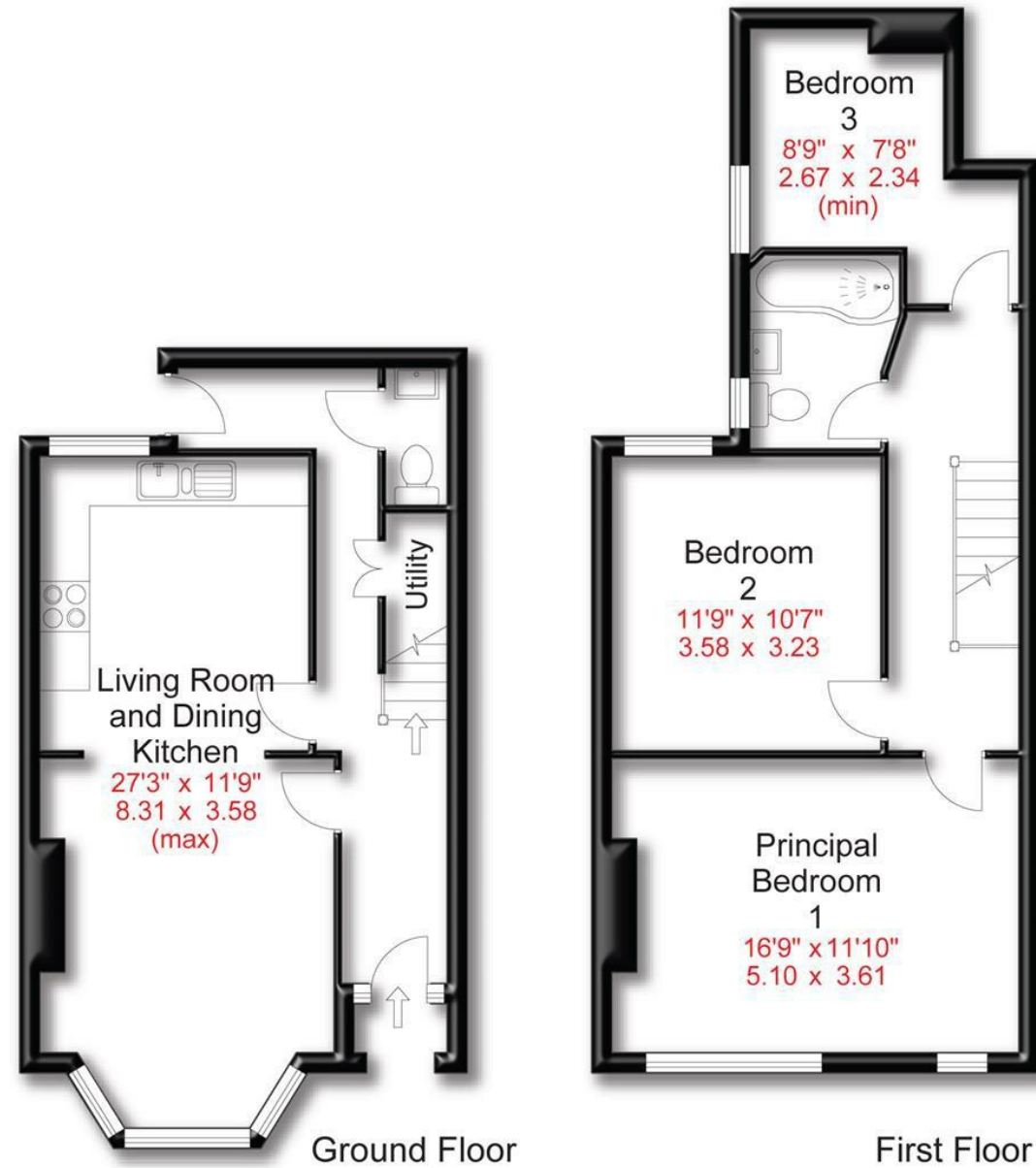


Approx Gross Floor Area = 982 Sq. Feet



Energy Efficiency Rating		
	Current	Potential
Very energy efficient - lower running costs		
(92 plus) A		
(81-91) B		84
(69-80) C	65	
(55-68) D		
(39-54) E		
(21-38) F		
(1-20) G		
Not energy efficient - higher running costs		
England & Wales	EU Directive 2002/91/EC	



Townfield Road | Altrincham
Asking Price £500,000



175 Ashley Road | Hale | WA15 9SD
t: 0161 928 9355
e: info@hibberthomes.com
www.hibberthomes.com

SALES & LETTINGS

Bedrooms 3

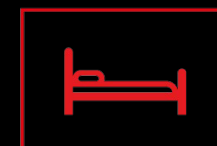
Bath 1

Reception 1

Permit Parking on Road

Area 982.00 sq ft

No Chain



- Semi Detached House
- Open Plan Kitchen/Dining
- Permit Parking
- Catchment To Outstanding Schools
- 982 Sq Ft

- Three bedrooms
- Private Garden
- Walking Distance To Altrincham/Hale
- Close To Transport Links
- NO CHAIN

A modern three bedroom semi detached house within walking distance to Altrincham! This property offers excellent accommodation comprising, entrance hallway, a large open plan living room and dining kitchen with a bay fronted window. Downstairs W.C. Upstairs offers a large and bright main bedroom with an original fireplace, two further bedrooms and a family bathroom. Outside there is a south east facing back garden. NO CHAIN.

