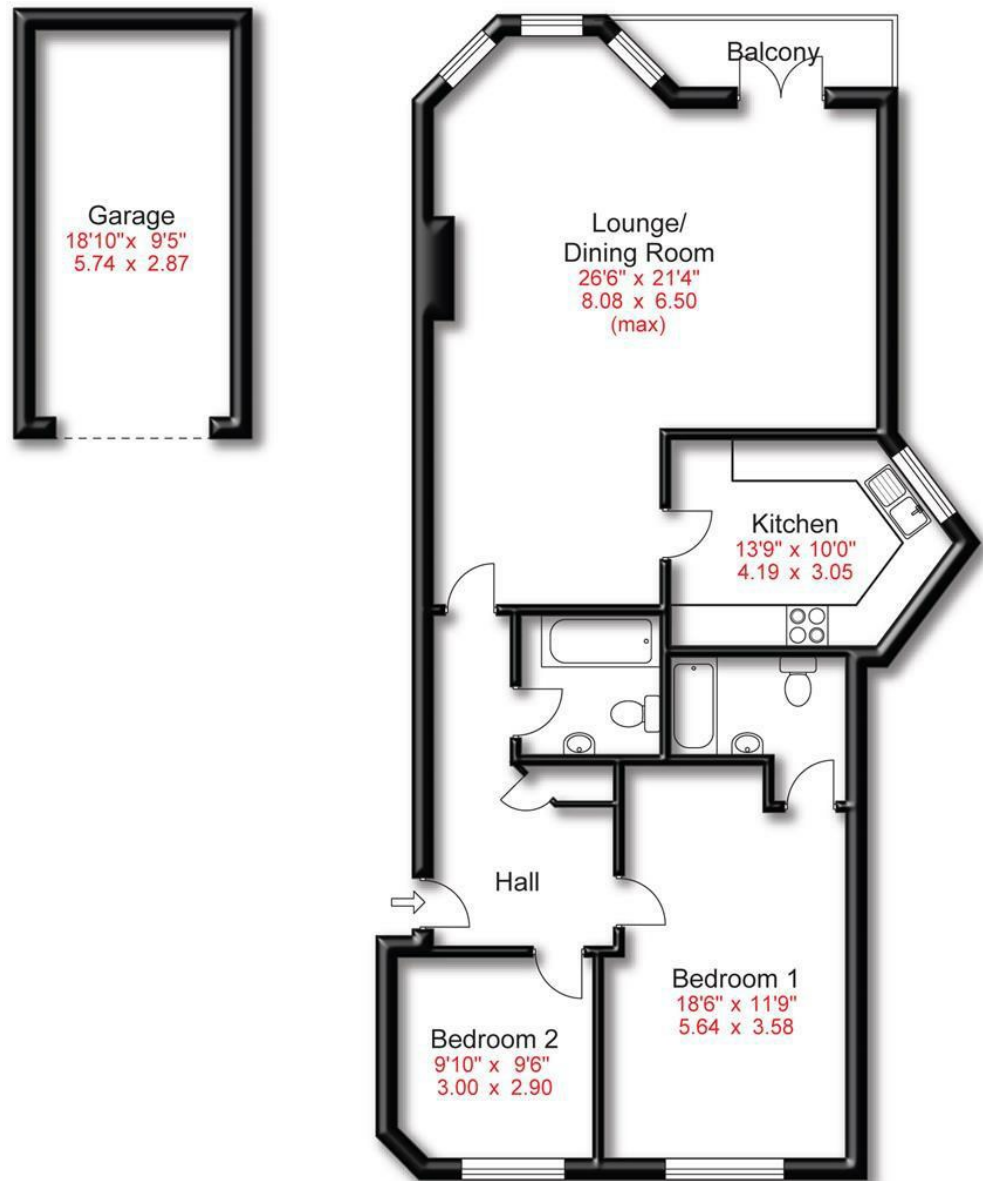


Approx Gross Floor Area = 1116 Sq. Feet



Ground Floor



Energy Efficiency Rating		Environmental Impact (CO ₂) Rating	
Current	Potential	Current	Potential
77	77		



**HIBBERT
HOMES**

175 Ashley Road | Hale | WA15 9SD
 t:0161 928 9355
 e: info@hibberthomes.com
 www.hibberthomes.com



**HIBBERT
HOMES**

Devisdale Road | Bowdon
Asking Price £480,000

Bedrooms 2	Bath 2	Reception 1	Private Parking	1116 Sq Ft	NO CHAIN

- SECOND FLOOR APARTMENT
- TWO BATHROOMS
- GREAT LOCATION
- VISITORS PARKING
- LIFTS TO ALL FLOORS

- TWO DOUBLE BEDROOMS
- OPEN PLAN LIVING
- PRIVATE PARKING & GARAGE
- MANICURED COMMUNAL GARDENS
- NO CHAIN

A **GENEROUS** second floor apartment in a **HIGHLY DESIRABLE RESIDENTIAL LOCATION**. Open plan sitting/dining room, fully fitted kitchen, two bedroom and two bath/shower rooms. Private balcony, immaculate communal gardens. Allocated parking with a private automatic garage door and visitors parking. Lifts to all floors. Video entry. Close Proximity To Hale and Altrincham and the motorway and railway network. **NO CHAIN**.

