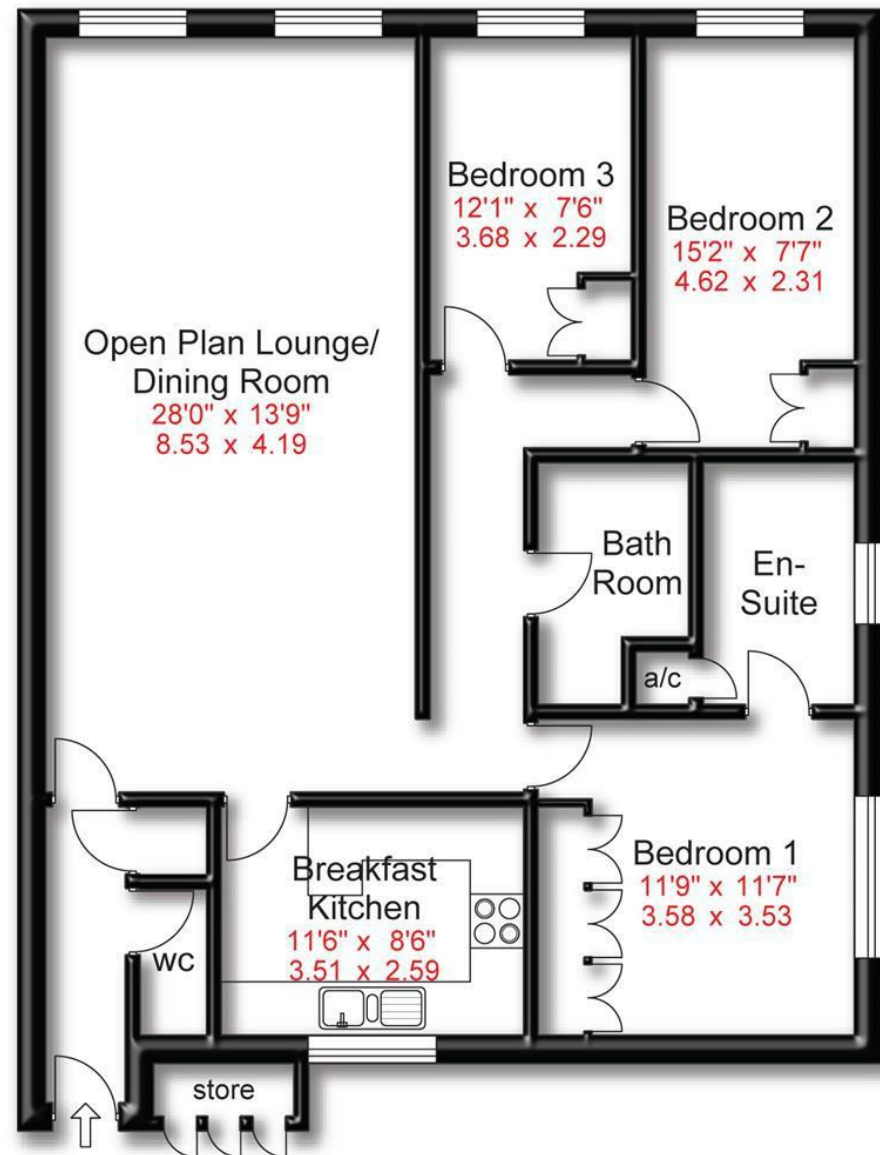


Approx Gross Floor Area = 1133 Sq. Feet
= 0000 Sq. Metres



Energy Efficiency Rating		
	Current	Potential
Very energy efficient - lower running costs		
(92 plus) A		
(81-91) B		
(69-80) C		
(55-68) D	58	
(39-54) E		
(21-38) F		
(1-20) G		
Not energy efficient - higher running costs		
England & Wales	EU Directive 2002/91/EC	75



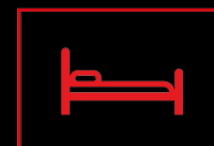
Bow Green Mews, Bow Green
Road, Bowden
Asking Price £420,000



175 Ashley Road | Hale | WA15 9SD
t: 0161 928 9355
e: info@hibberthomes.com
www.hibberthomes.com

SALES & LETTINGS

Bedrooms 3



Bathrooms 2



Reception 1



Private Parking



1133 Sq Ft



NO CHAIN



- Large Three Bed Apartment
- Two Bathrooms
- Manicured Gardens
- 1133 Sq Ft
- NO CHAIN
- Spacious Lounge/Dining Area
- Desirable Location
- Double Garage
- £2,460 Annual Service Charge.

An excellent opportunity to purchase a large, three bed, first floor apartment within a desirable development in the sought after area of Bowdon. The accommodation comprises, large lounge/dining room, beautifully appointed kitchen and a seperate wc. Three large double bedrooms, one with ensuite and a family bathroom. Externally there is the double garage with a built-in store cupboard adjacent. Ample forcourt parking and manicured gardens. NO CHAIN!

