



# EASTBOURNE PROPERTY SHOP

[eastbournepropertyshop.co.uk](http://eastbournepropertyshop.co.uk)

Sales & Lettings

01323 764122

Oak Tree Close, Eastbourne, BN23 8DG

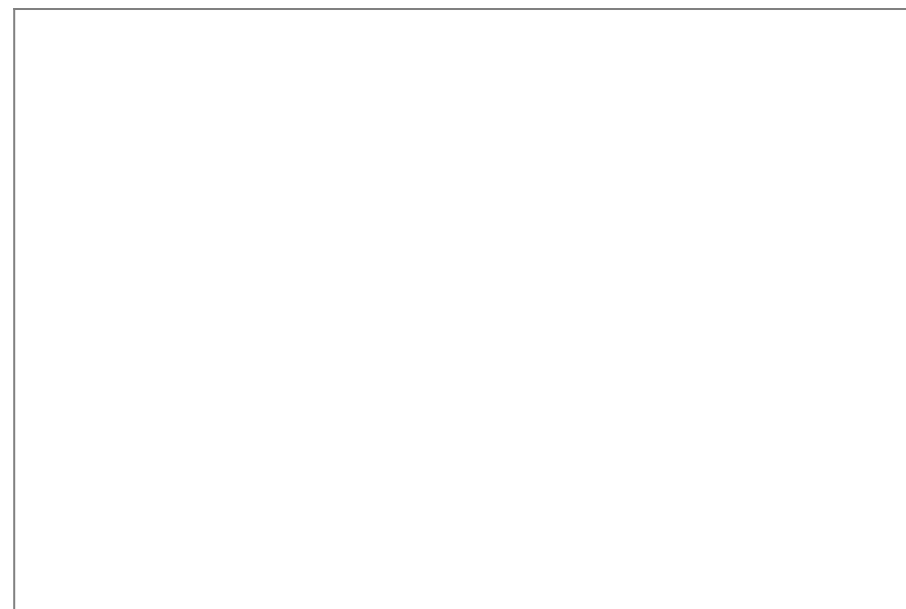
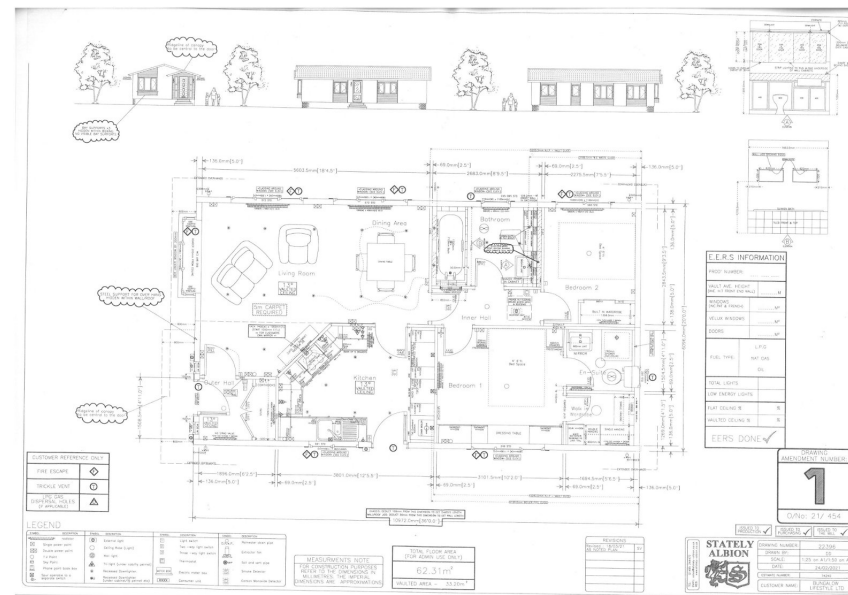
£239,950

🛏️ 2 🚿 2 🚪 1



Eastbourne Property Shop are delighted to offer to the market this exceptional two-bedroom bungalow located in the popular development in Oak Tree Close. The bungalow approximately two and a half years old with a remaining Platinum Seal 10 year warranty, and comprises of lounge / diner, modern fitted kitchen with built in appliances, two double bedrooms with master having en suite bathroom and a wardrobe / dressing room. The property also has front, rear and side gardens and parking for numerous cars being offered CHAIN FREE.





7 Mimram Road, Stone Cross, Pevensey, East Sussex, BN24 5DZ

[www.eastbournepropertyshop.co.uk](http://www.eastbournepropertyshop.co.uk)