



## 14P Borrromeo Close

Aigburth, Liverpool, L17 7DS

**Offers over £325,000**



Situated in the charming area of Borrromeo Close, Aigburth, Liverpool, this delightful semi-detached house offers a perfect blend of comfort and convenience. With three well-proportioned bedrooms and two modern bathrooms, this property is ideal for families seeking a spacious and inviting home.

The heart of the house is a generous open plan lounge and dining room, providing a warm and welcoming space for relaxation and entertaining. The property boasts a large south-facing rear garden, which is not only extremely secluded but also perfect for enjoying sunny days and outdoor activities. This private oasis is a rare find in urban living, offering a tranquil retreat right at your doorstep.

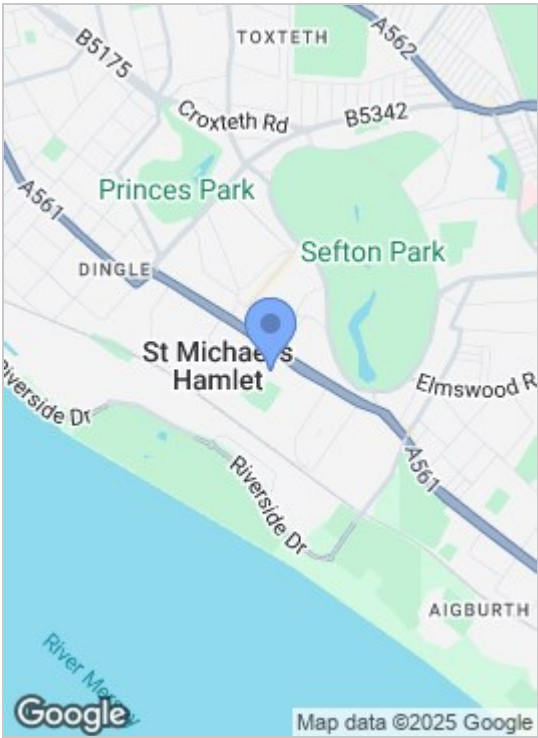
For those with vehicles, the property includes off-road parking for up to three cars, ensuring that parking is never a concern. The location is particularly advantageous, being within walking distance to the beautiful Sefton Park, a perfect spot for leisurely strolls, picnics, and outdoor recreation.

Families will appreciate the excellent local schools in the vicinity, making this home an ideal choice for those with children. Additionally, the property comes with a 10-year new build warranty from 2018, providing peace

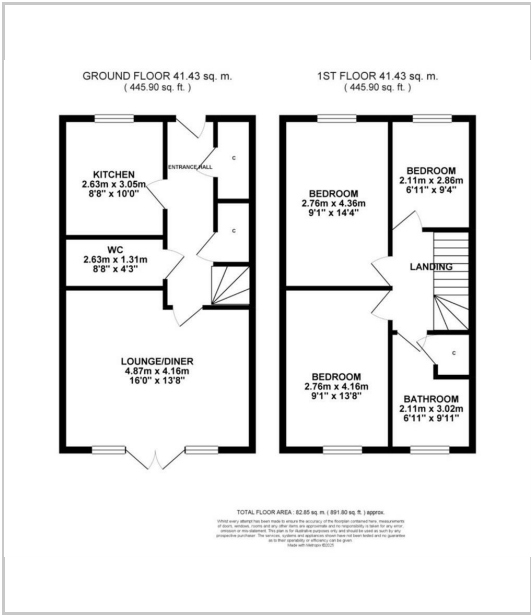




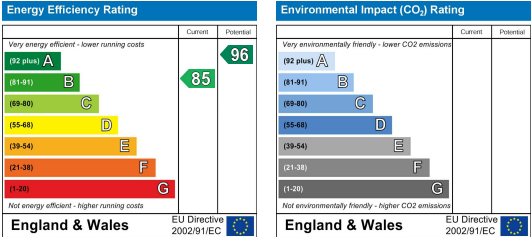
Area Map



Floor Plans



Energy Efficiency Graph



These particulars, whilst believed to be accurate are set out as a general outline only for guidance and do not constitute any part of an offer or contract. Intending purchasers should not rely on them as statements of representation of fact, but must satisfy themselves by inspection or otherwise as to their accuracy. No person in this firms employment has the authority to make or give any representation or warranty in respect of the property.