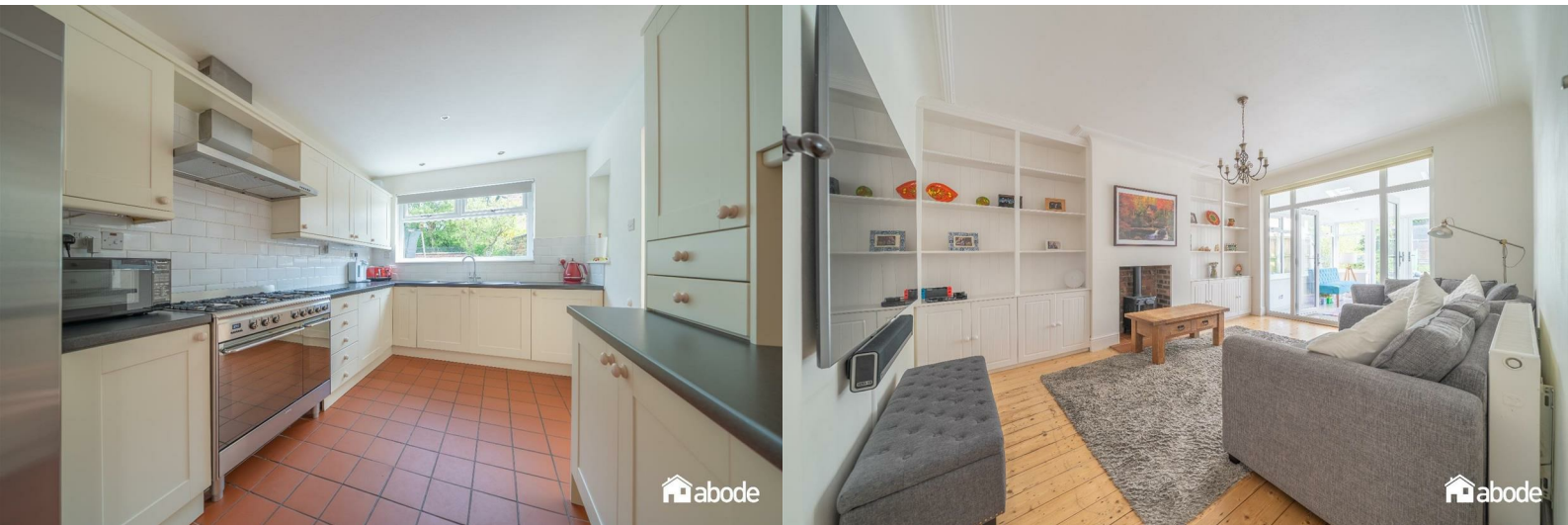




6 Dudlow Gardens

Calderstones, Liverpool, L18 2HA

Offers over £700,000



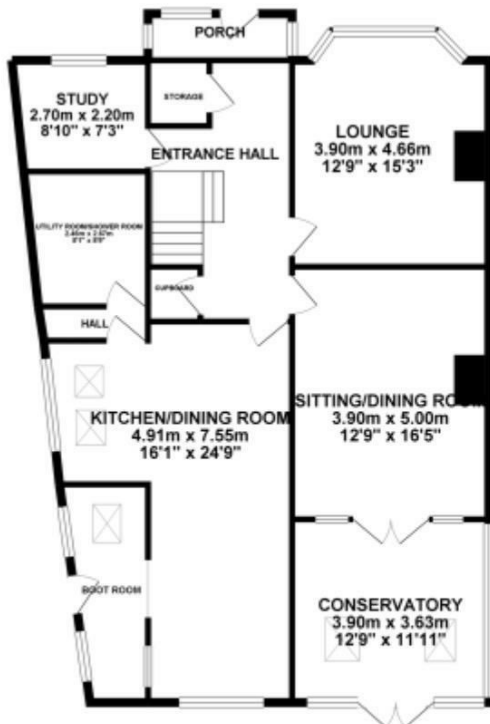
6 Dudlow Gardens

Calderstones, Liverpool, L18 2HA

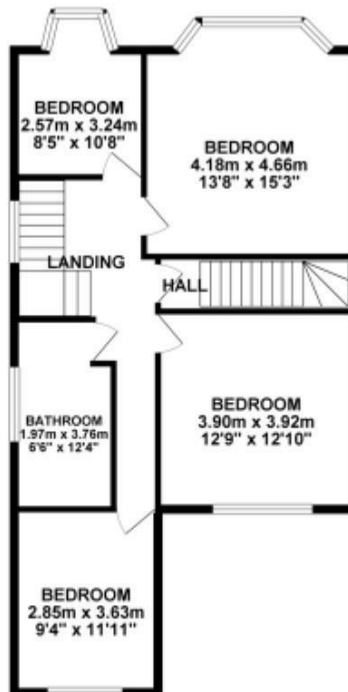
Offers over £700,000



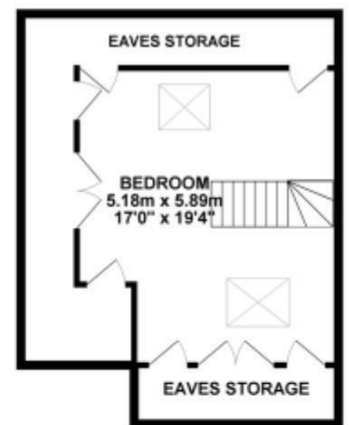
GROUND FLOOR 114.93 sq. m.
(1237.08 sq. ft.)



1ST FLOOR 73.99 sq. m.
(796.39 sq. ft.)



2ND FLOOR 48.50 sq. m.
(522.03 sq. ft.)

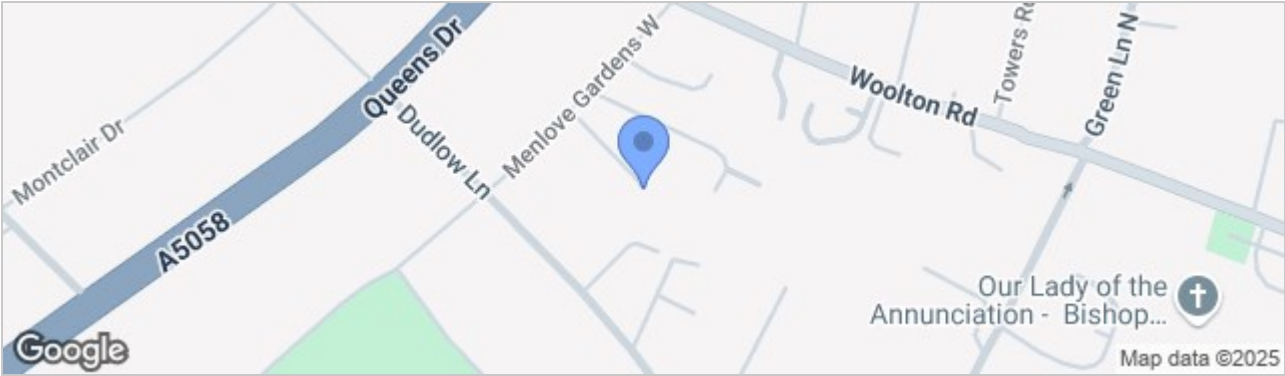


TOTAL FLOOR AREA : 237.41 sq. m. (2555.49 sq. ft.) approx.

Whilst every attempt has been made to ensure the accuracy of the floorplan contained here, measurements of doors, windows, rooms and any other items are approximate and no responsibility is taken for any error, omission or mis-statement. This plan is for illustrative purposes only and should be used as such by any prospective purchaser. The services, systems and appliances shown have not been tested and no guarantee as to their operability or efficiency can be given.
Made with Metropix ©2025



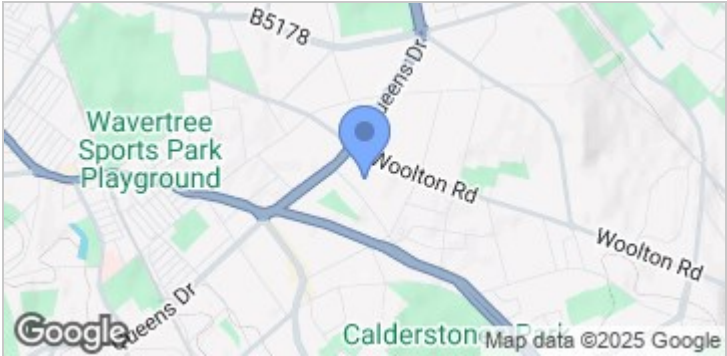
Road Map



Hybrid Map



Terrain Map



- **TRULY STUNNING THROUGHOUT**
- **HIGHLY SOUGHT AFTER L18 LOCATION**
- **WALKING DISTANCE TO CALDERSTONES PARK**
- **EXCELLENT LOCAL SCHOOLS**
- **FOUR BEDROOMS PLUS LOFT ROOM**
- **SPACIOUS OPEN PLAN KITCHEN/DINER**
- **TWO BATHROOMS**
- **UTLITY ROOM & STUDY/GYM ROOM**
- **LARGE SECLUDED REAR GARDEN**
- **OFF ROAD PARKING**

Viewing

Please contact our Allerton Office on 01516013003 if you wish to arrange a viewing appointment for this property or require further information.

These particulars, whilst believed to be accurate are set out as a general outline only for guidance and do not constitute any part of an offer or contract. Intending purchasers should not rely on them as statements of representation of fact, but must satisfy themselves by inspection or otherwise as to their accuracy. No person in this firms employment has the authority to make or give any representation or warranty in respect of the property.

Energy Efficiency Graph

