



87 Garston Old Road

Grassendale, Liverpool, L19 9AE

Offers over £395,000

 3  2  2  C



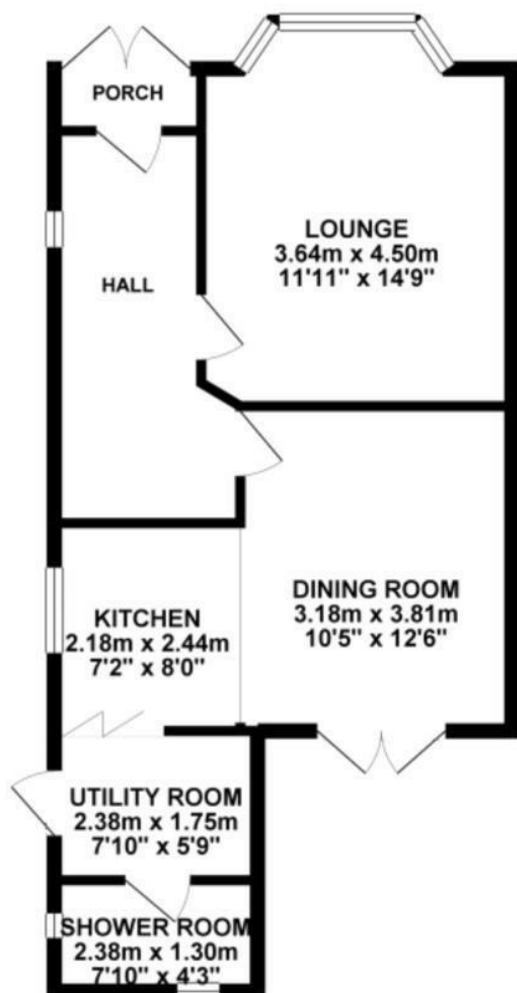
87 Garston Old Road

Grassendale, Liverpool, L19 9AE

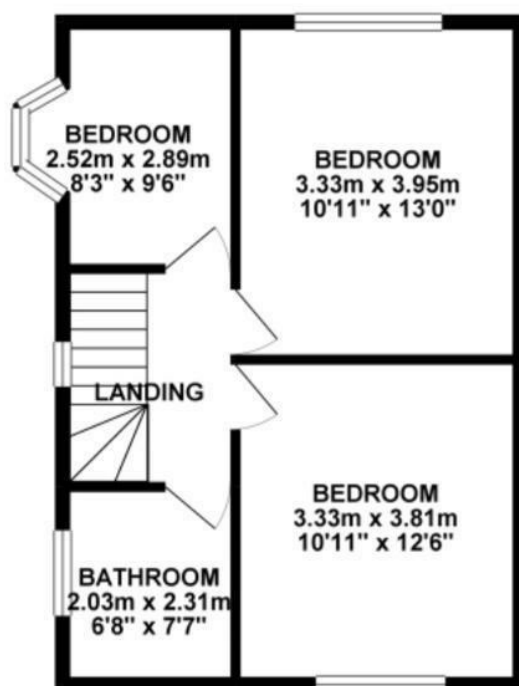
Offers over £395,000



GROUND FLOOR 49.98 sq. m.
(538.01 sq. ft.)



1ST FLOOR 42.09 sq. m.
(453.05 sq. ft.)



TOTAL FLOOR AREA : 92.07 sq. m. (991.05 sq. ft.) approx.

Whilst every attempt has been made to ensure the accuracy of the floorplan contained here, measurements of doors, windows, rooms and any other items are approximate and no responsibility is taken for any error, omission or mis-statement. This plan is for illustrative purposes only and should be used as such by any prospective purchaser. The services, systems and appliances shown have not been tested and no guarantee as to their operability or efficiency can be given.
Made with Metropix ©2025



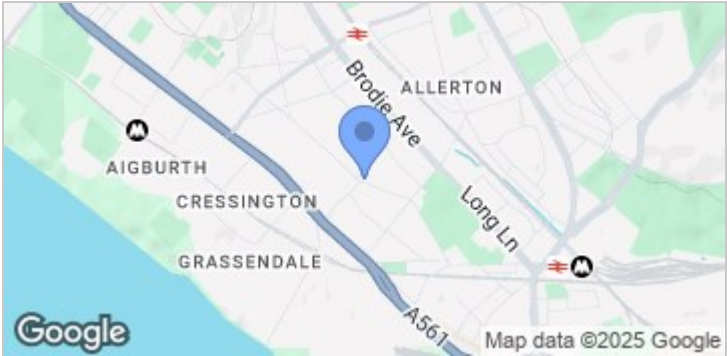
Road Map



Hybrid Map



Terrain Map



- **SUPERBLY PRESENTED THROUGHOUT**
- **HIGHLY SOUGHT AFTER GRASSENDALE LOCATION**
- **THREE BEDROOM FAMILY HOME**
- **OPEN PLAN KITCHEN & DINING ROOM**
- **UTILITY ROOM & DOWNSTAIRS SHOWER ROOM**
- **EXCELLENT LOCAL SCHOOLS**
- **OFF ROAD PARKING FOR SEVERAL CARS**
- **SECLUDED REAR GARDEN**

Viewing

Please contact our Allerton Office on 01516013003 if you wish to arrange a viewing appointment for this property or require further information.

These particulars, whilst believed to be accurate are set out as a general outline only for guidance and do not constitute any part of an offer or contract. Intending purchasers should not rely on them as statements of representation of fact, but must satisfy themselves by inspection or otherwise as to their accuracy. No person in this firm's employment has the authority to make or give any representation or warranty in respect of the property.

Energy Efficiency Graph

