



17 Argyle Street

City Centre, Liverpool, L1 5BL

Offers over £160,000

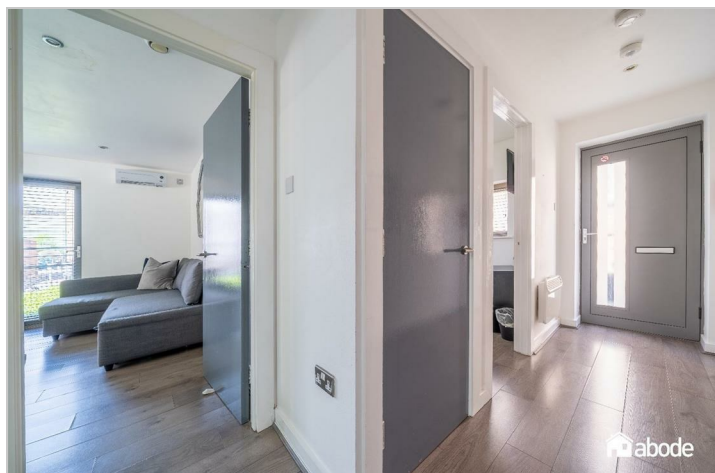
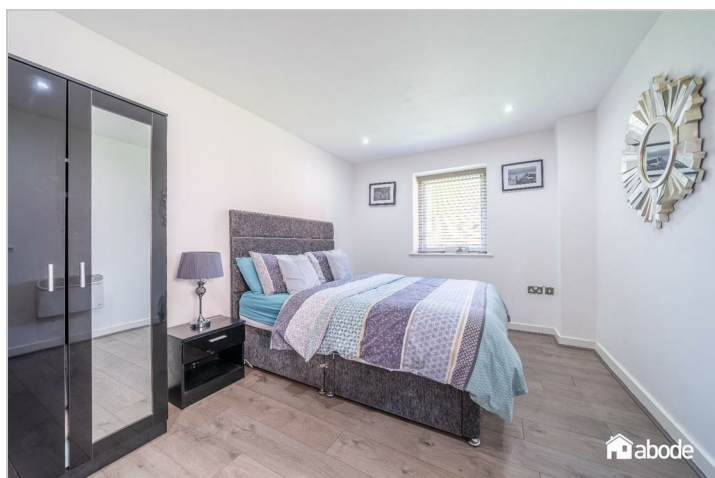


17 Argyle Street

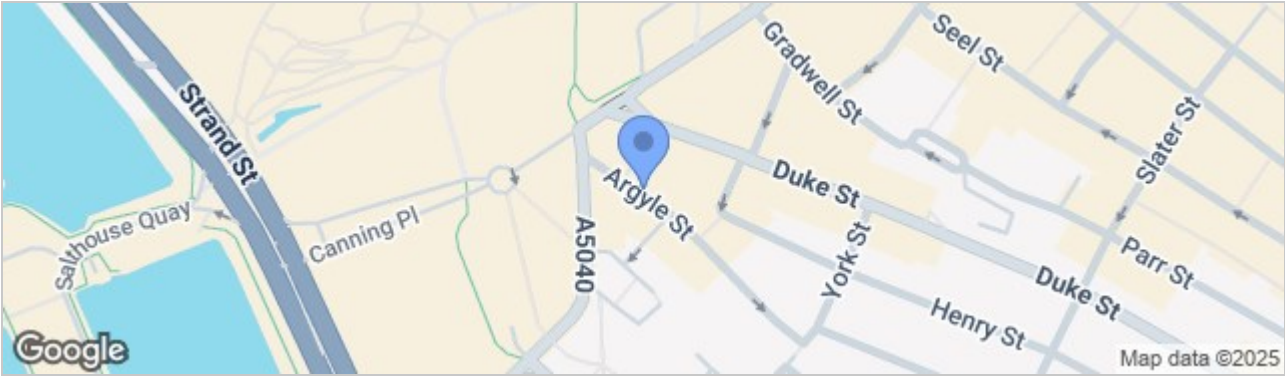
City Centre, Liverpool, L1 5BL

Offers over £160,000





Road Map



Hybrid Map



Terrain Map



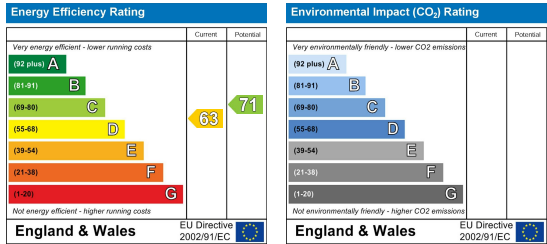
- SUPERBLY PRESENTED THROUGHOUT
- INCREDIBLE CITY CENTRE LOCATION
- FIRST FLOOR APARTMENT
- COMMUNAL BALCONY
- OPEN PLAN KITCHEN/DINING & LIVING AREA
- LARGE DOUBLE BEDROOM
- MODERN FAMILY BATHROOM
- CALL NOW FOR EARLY VIEWING

Viewing

Please contact our Allerton Office on 01516013003 if you wish to arrange a viewing appointment for this property or require further information.

These particulars, whilst believed to be accurate are set out as a general outline only for guidance and do not constitute any part of an offer or contract. Intending purchasers should not rely on them as statements of representation of fact, but must satisfy themselves by inspection or otherwise as to their accuracy. No person in this firm's employment has the authority to make or give any representation or warranty in respect of the property.

Energy Efficiency Graph



82 Coronation Road, Crosby, Liverpool L23 5RH

Tel: 0151 909 3003
Email: crosby@abode.group.co.uk
Web: www.abode-group.co.uk

6 Allerton Road, Mossley Hill, Liverpool, L18 1LN

Tel: 0151 601 3003
Email: allerton@abode-group.co.uk
Web: www.abode-group.co.uk

2 Chapel Lane, Formby, Liverpool, L37 4DU

Tel: 01704 827 402
Email: formby@abode-group.co.uk
Web: www.abode-group.co.uk