



## Plot 212 Keckwick Hill Crescent

, Daresbury, WA4 4GT

**Prices from £498,995**



CASTLE GREEN HOMES present the ALDERTON with a SPACIOUS SEPARATE LOUNGE leading to OPEN PLAN KITCHEN DINING area with a SEPARATE UTILITY. Benefitting from EN-SUITE TO MASTER and INTEGRAL GARAGE.

\*\* 5\* HBF Customer Satisfaction \*\* EASYMOVE SCHEME AVAILABLE \*\*

About The Alderton

The Alderton fuses elegant design with contemporary features to create a comfortable home of distinction. The welcoming hallway leads to the spacious living area, while the open-plan kitchen/dining area forms the beating heart of this beautiful house. The en-suite primary bedroom is one of four first-floor bedrooms offering plenty of space. Finally, the cloakroom, utility area and an integrated garage are desirable features fit for modern family life.

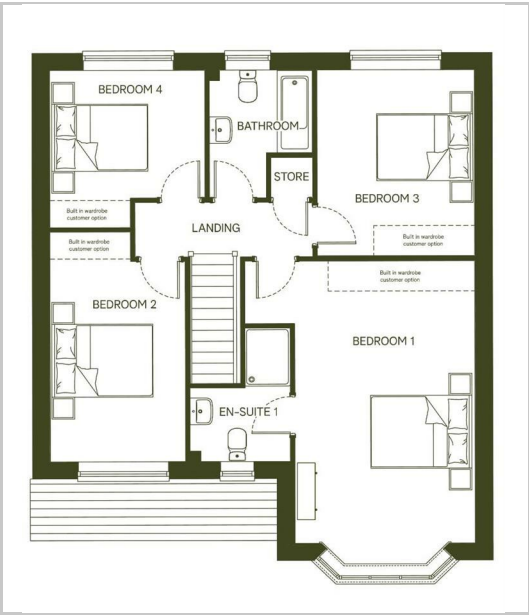


- Kitchen 10'11" x 10'2" (3.33 x 3.11)
- Family / Dining 17'4" x 11'10" (5.30 x 3.63)
- Lounge 15'11" x 11'8" (4.87 x 3.57)
- Cloaks 5'10" x 3'9" (1.78 x 1.16)
- Utility 7'7" x 5'10" (2.32 x 1.78)
- Garage 18'0" x 8'5" (5.50 x 2.58)
- Bedroom 1 20'7" x 11'8" (6.28 x 3.57)
- En-Suite 9'0" x 6'6" (2.75 x 1.99)
- Bedroom 2 15'6" x 8'9" (4.74 x 2.67)
- Bedroom 3 12'6" x 10'2" (3.83 x 3.11)
- Bedroom 4 10'7" x 10'0" (3.24 x 3.07)
- Bathroom 8'7" x 6'8" (2.63 x 2.04)

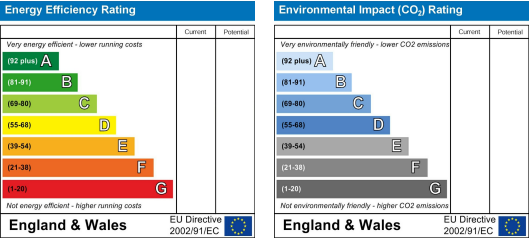
Area Map



Floor Plans



Energy Efficiency Graph



These particulars, whilst believed to be accurate are set out as a general outline only for guidance and do not constitute any part of an offer or contract. Intending purchasers should not rely on them as statements of representation of fact, but must satisfy themselves by inspection or otherwise as to their accuracy. No person in this firms employment has the authority to make or give any representation or warranty in respect of the property.