



24 Lower Hays

, Daresbury, WA4 4GT

Prices from £519,995



CASTLE GREEN HOMES - The Chatsworth - OPEN PLAN Family, Dining, Kitchen Area with SEPARATE UTILITY ROOM, combining FOUR BEDROOMS with an EN-SUITE to master and also a FAMILY BATHROOM.

** 5* HBF Customer Satisfaction 2025 ** Easymove Scheme Available **

The Chatsworth

The Chatsworth at Bridgewater View Phase 2 at Daresbury Garden Village is an ideal choice for those looking for open-plan living. To the rear of the ground floor is a spacious open plan family, kitchen & dining room with separate study where large bright French doors look out onto the garden. The separate study offers a great workspace and the lounge offers a comfortable area to relax and unwind at the end of a busy day. Upstairs you'll discover four generous-sized bedrooms, one of which has an en-suite and also a family bathroom. Off road parking completes this impressive family home.



Kitchen / Family / Dining 26'10" x 11'10" (8.18 x 3.61)

Lounge 18'6" x 10'11" (5.65 x 3.34)

Cloaks 5'8" x 3'6" (1.75 x 1.09)

Utility 5'8" x 5'7" (1.75 x 1.71)

Study 11'0" x 8'8" (3.37 x 2.65)

Bedroom 1 17'6" x 14'4" (5.34 x 4.37)

En-Suite 8'5" x 6'5" (2.59 x 1.98)

Bedroom 2 13'10" x 8'9" (4.24 x 2.68)

Bedroom 3 13'0" x 9'6" (3.97 x 2.91)

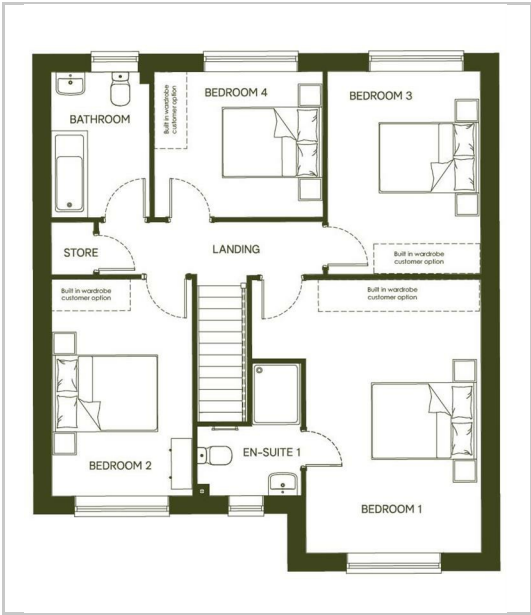
Bedroom 4 10'6" x 9'4" (3.21 x 2.85)

Bathroom 9'4" x 6'2" (2.85 x 1.88)

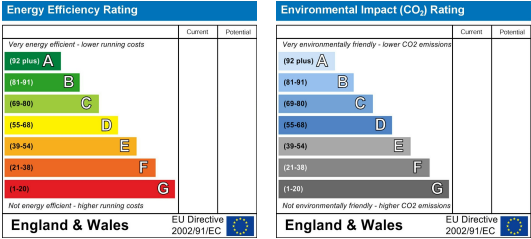
Area Map



Floor Plans



Energy Efficiency Graph



These particulars, whilst believed to be accurate are set out as a general outline only for guidance and do not constitute any part of an offer or contract. Intending purchasers should not rely on them as statements of representation of fact, but must satisfy themselves by inspection or otherwise as to their accuracy. No person in this firms employment has the authority to make or give any representation or warranty in respect of the property.