



2 Lower Hays

Daresbury, Warrington, WA4 4GT

Prices from **£444,995**

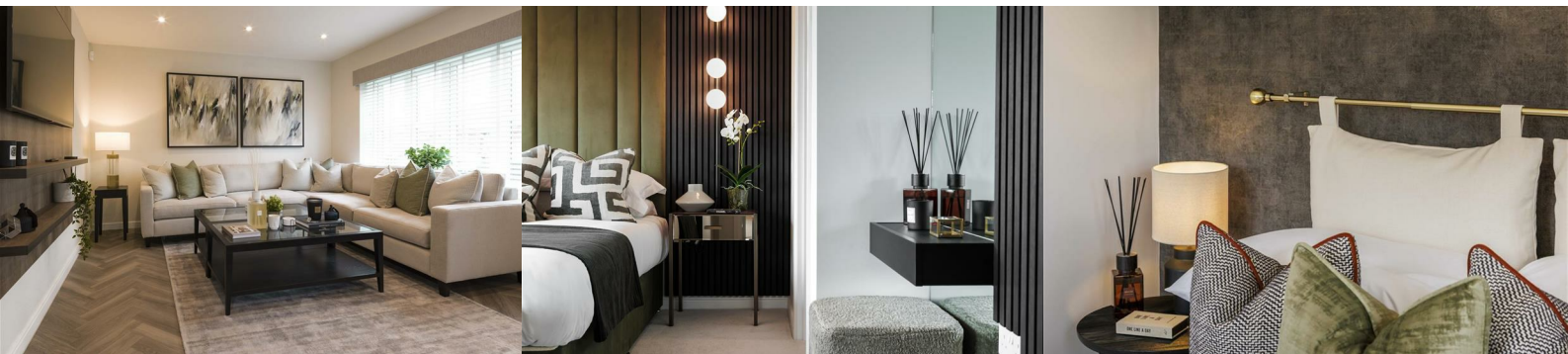


CASTLE GREEN HOMES - Heatherington OPEN-PLAN KITCHEN, DINING area, separate UTILITY room, EN SUITE bathroom in the primary bedroom.

Phase 2 LAUNCH AUGUST 2024 - VIP Showhome viewings only, call to register your interest now. EARLYBIRD RESERVATIONS NOW BEING TAKEN.

About The Heatherington

As you open the door to the Heatherington you are welcomed with a spacious hallway. To one side you will find a large living room spanning the whole length of the house, perfect for relaxing after a long day. While to the other side you will find a spacious open-plan kitchen & dining area, making entertaining friends and family easy work. A laundry/utility room and cloakroom complete the ground floor to this well-proportioned home. A spacious primary bedroom with en suite and three further bedrooms can be found upstairs along with a luxurious family bathroom.



Kitchen/Dining 12'5" x 11'3" (3.80 x 3.45)

Family 11'6" x 11'3" (3.51 x 3.45)

Lounge 20'2" x 12'0" (6.15 x 3.68)

Utility 6'8" x 5'6" (2.05 x 1.70)

Cloaks 5'2" x 3'6" (1.58 x 1.08)

Bedroom 1 11'8" x 11'6" (3.58 x 3.51)

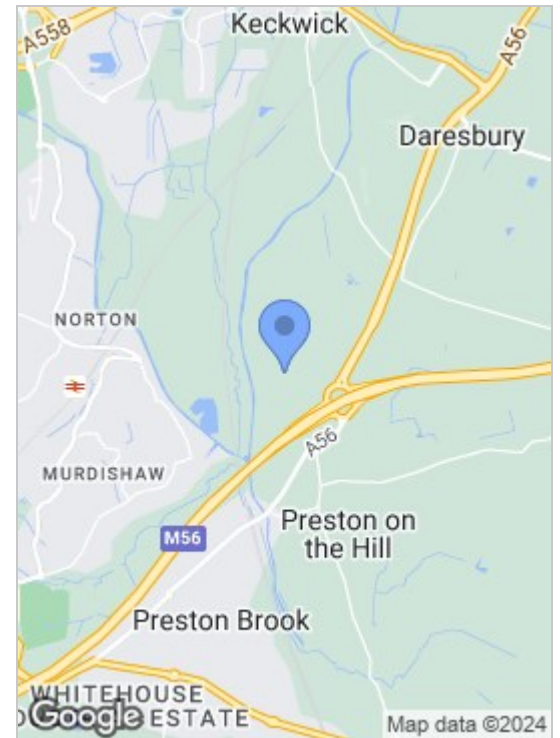
Bedroom 2 12'2" x 10'9" (3.73 x 3.28)

Bedroom 3 11'5" x 11'3" (3.49 x 3.45)

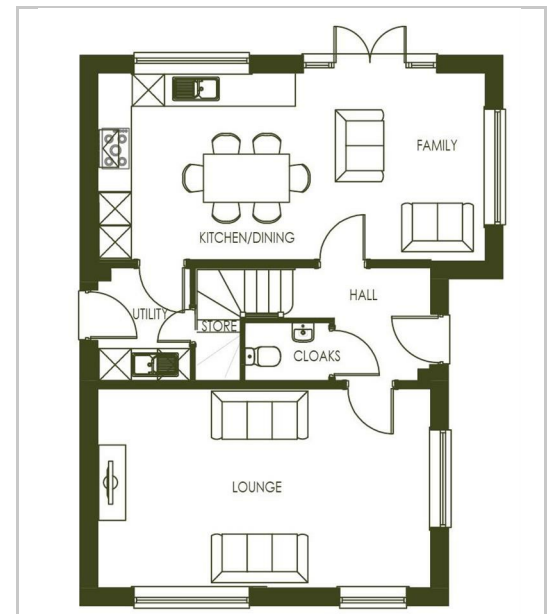
Bathroom 7'0" x 5'6" (2.15 x 1.70)

En Suite 8'1" x 5'6" (2.48 x 1.70)

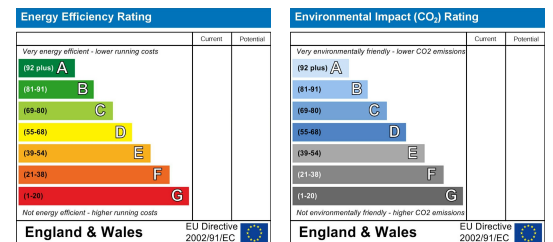
Area Map



Floor Plans



Energy Efficiency Graph



These particulars, whilst believed to be accurate are set out as a general outline only for guidance and do not constitute any part of an offer or contract. Intending purchasers should not rely on them as statements of representation of fact, but must satisfy themselves by inspection or otherwise as to their accuracy. No person in this firm's employment has the authority to make or give any representation or warranty in respect of the property.

82 Coronation Road, Crosby, Liverpool L23 5RH

6 Allerton Road, Mossley Hill, Liverpool, L18 1LN

2 Chapel Lane, Formby, Liverpool, L37 4DU

Tel: 0151 909 3003

Email: crosby@abode.group.co.uk

Web: www.abode-group.co.uk

Tel: 0151 601 3003

Email: allerton@abode-group.co.uk

Web: www.abode-group.co.uk

Tel: 01704 827 402

Email: formby@abode-group.co.uk

Web: www.abode-group.co.uk