



11 Beech Court

Liverpool, L18 3JZ

£155,000

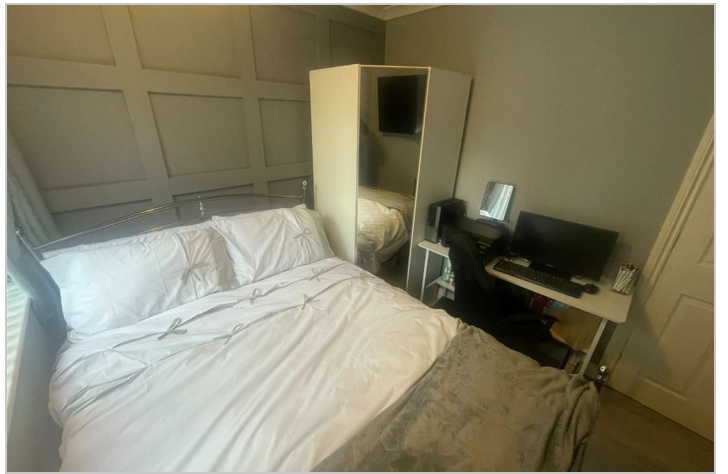


11 Beech Court

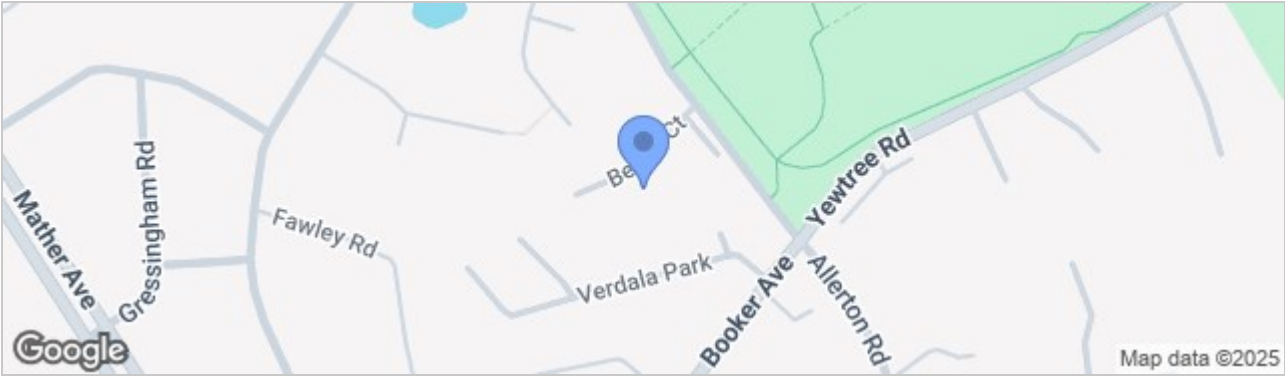
Liverpool, L18 3JZ

£155,000





Road Map



Hybrid Map



Terrain Map



- NO ONWARD CHAIN
- TWO BEDROOMS
- TOP FLOOR APARTMENT
- HIGHLY SOUGHT AFTER L18 LOCATION
- WALKING DISTANCE TO CALDERSTONES PARK
- SUPERBLY PRESENTED

Viewing

Please contact our Allerton Office on 01516013003 if you wish to arrange a viewing appointment for this property or require further information.

These particulars, whilst believed to be accurate are set out as a general outline only for guidance and do not constitute any part of an offer or contract. Intending purchasers should not rely on them as statements of representation of fact, but must satisfy themselves by inspection or otherwise as to their accuracy. No person in this firm's employment has the authority to make or give any representation or warranty in respect of the property.

Energy Efficiency Graph

