



Flat 46, 246 Upper Parliament Street

Parliament Place, Liverpool, L8 7QE

£55,000

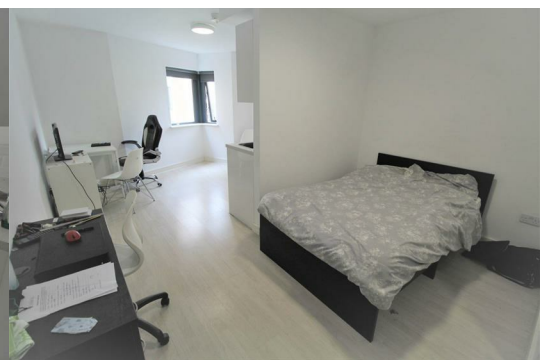
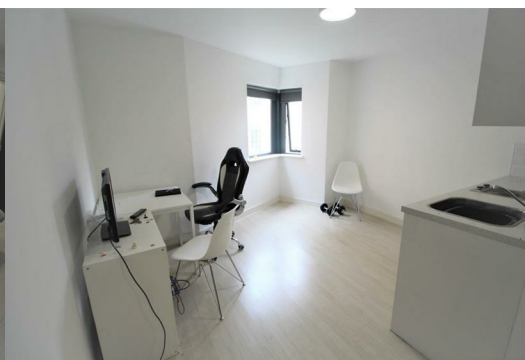


FANTASTIC INVESTMENT OPPORTUNITY - CURRENTLY LET - Paying £495.00 pcm for this studio property. A fantastic opportunity to invest in an area of strong capital growth close to the universities and all the amenities that the city has to offer.

A luxurious purpose-built accommodation in the form of self-contained studio apartment. This modern studio offers open plan kitchen/living space, bathroom and a double bed, providing a hassle-free, boutique living experience.

This development has been completed to a high standard with lifts to all floors.

Leasehold (£350 PA ground rent) (Service Charge £2.009 PA)



Communal Entrance

Intercom access. Lifts to all floors.

Lounge Area 11'9" x 10'4" (3.60 x 3.16)

Double glazed window to front. Range of wall and base units. Integrated hob, extractor. Stainless steel sink unit with mixer tap.

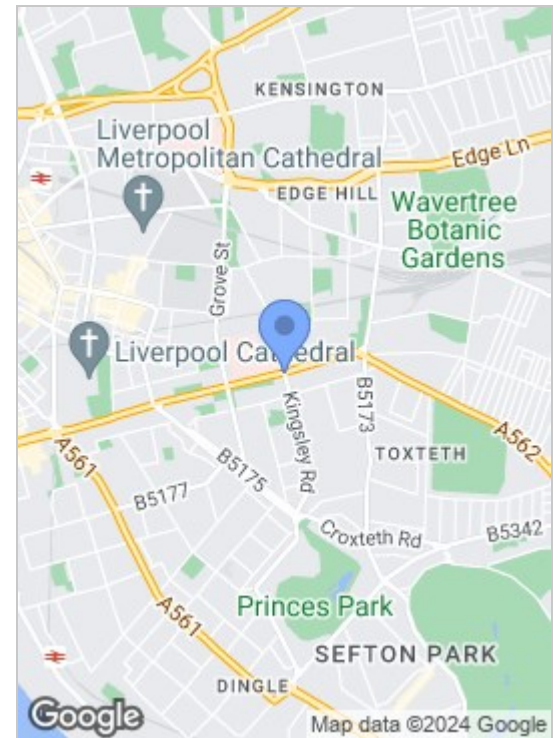
Opening to bedroom area.

Bedroom Area 11'9" x 7'3" (3.60 x 2.21)

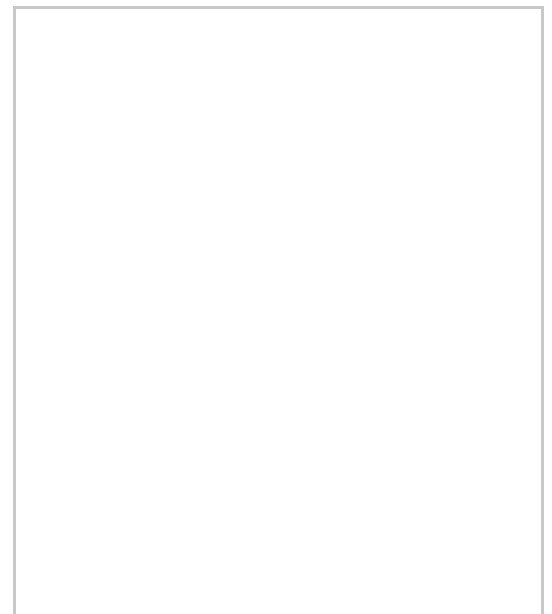
Shower Room 6'6" x 4'11" (2.00 x 1.51)

Shower unit. Free standing wash basin. Low level wc.

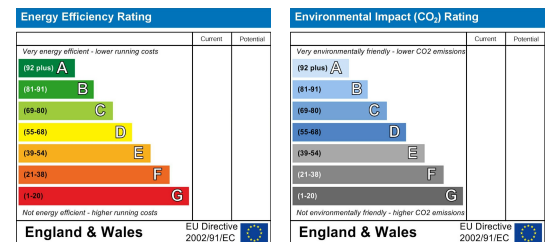
Area Map



Floor Plans



Energy Efficiency Graph



These particulars, whilst believed to be accurate are set out as a general outline only for guidance and do not constitute any part of an offer or contract. Intending purchasers should not rely on them as statements of representation of fact, but must satisfy themselves by inspection or otherwise as to their accuracy. No person in this firm's employment has the authority to make or give any representation or warranty in respect of the property.

82 Coronation Road, Crosby, Liverpool L23 5RH

6 Allerton Road, Mossley Hill, Liverpool, L18 1LN

2 Chapel Lane, Formby, Liverpool, L37 4DU

Tel: 0151 909 3003

Email: crosby@abode-group.co.uk

Web: www.abode-group.co.uk

Tel: 0151 601 3003

Email: allerton@abode-group.co.uk

Web: www.abode-group.co.uk

Tel: 01704 827 402

Email: formby@abode-group.co.uk

Web: www.abode-group.co.uk