



More House

The Grove, Isleworth, TW7

£375,000

This beautifully-presented two double-bedroom ground floor apartment is situated on one of Isleworth's most desirable roads, close to Isleworth train station, Osterley tube station, local schools and amenities. Offered with no forward chain, the property offers two large double bedrooms, a modern fitted kitchen with underfloor heating, modern family bathroom and a spacious reception room leading out to a large communal garden via French doors.

Council Tax band: C

Tenure: Leasehold

EPC Energy Efficiency Rating: D

EPC Environmental Impact Rating:

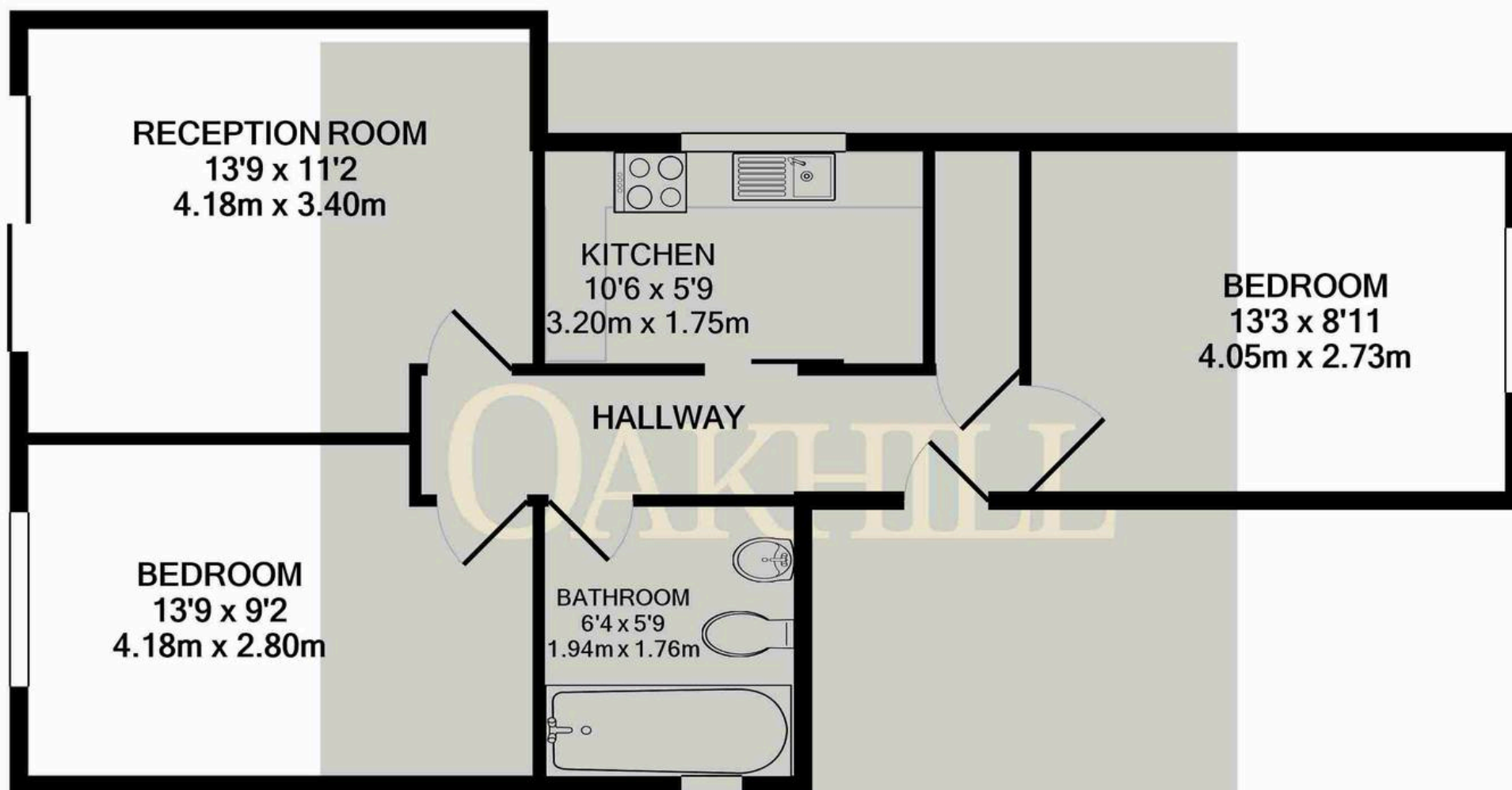
- No Forward Chain
- Two Double Bedrooms
- Allocated Parking
- Large Communal Gardens
- Beautifully Presented
- Ground Floor
- Close to Train & Tube Stations
- Block is Self Managed



SCAN HERE
FOR
PROPERTY
DETAILS



OAKHILL



Whilst every attempt has been made to ensure the accuracy of the floor plan contained here, the position of doors, windows, rooms and any other items are approximate and no responsibility is taken for omission, or mis-statement. This plan is for illustrative purposes only and should be used as a guide only by prospective purchaser. The services, systems and appliances shown have not been tested and no warranty as to their operability or efficiency can be given

Made with Metropix ©2024

OAKHILL