

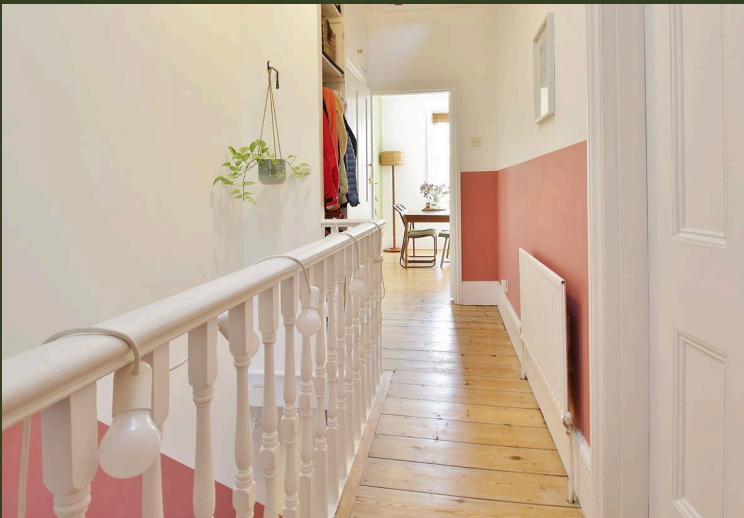


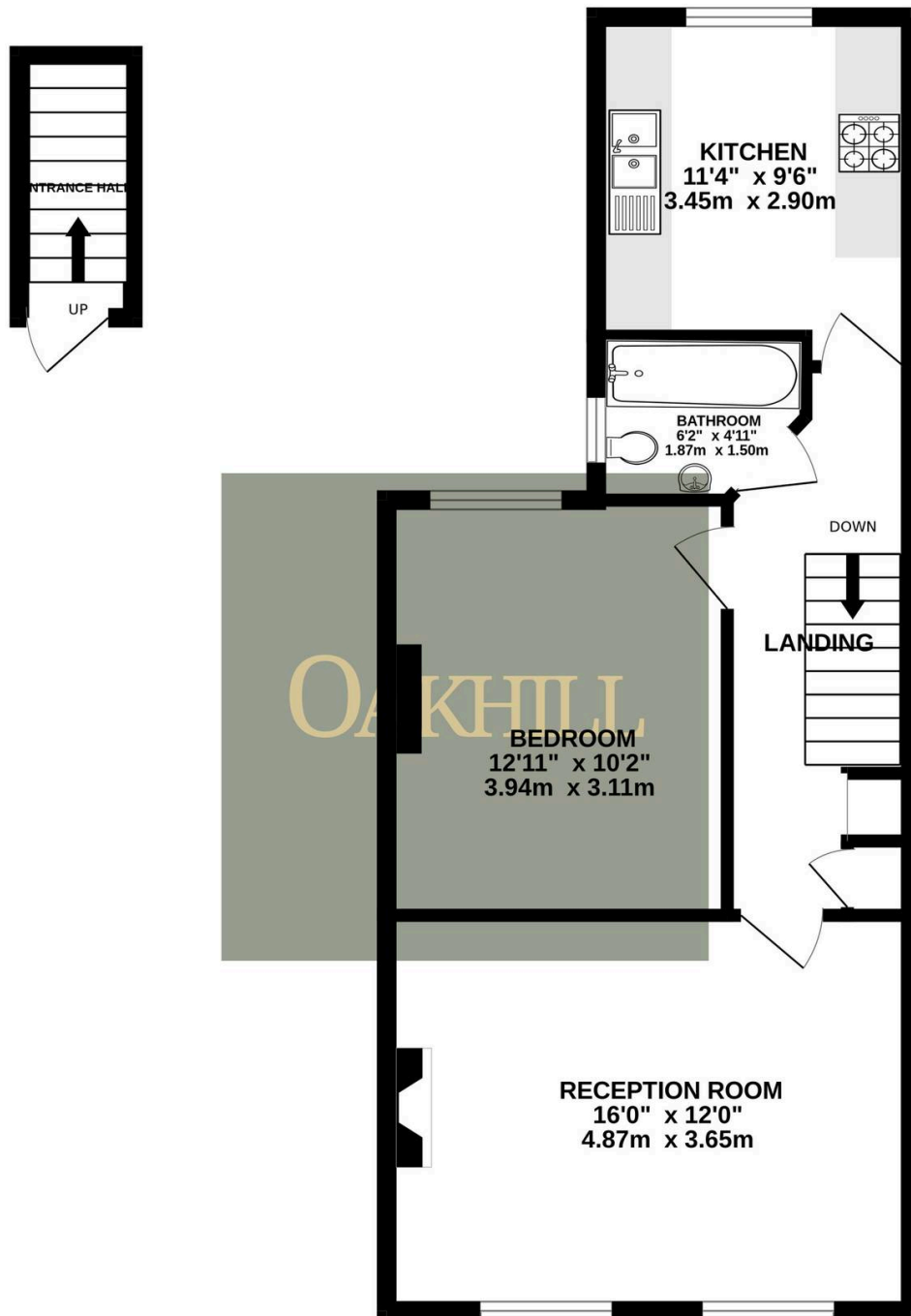
Whitton Road, Hounslow – TW3

£310,000 Leasehold

This beautifully presented, spacious one double bedroom first floor maisonette is ideally located within a short walk of Hounslow Train Station and Hounslow High Street and would make the ideal first time or investment buy. The property features a large welcoming hallway, spacious reception room, double bedroom, modern bathroom, modern fitted kitchen and access to a large loft space which could be used as home office or as storage. The property also benefits from double glazed sash windows, gas central heating, a rear garden that is split with the downstairs flat and off street parking at the rear of the property.

OAKHILL





Whilst every attempt has been made to ensure the accuracy of the floorplan contained here, measurements of doors, windows, rooms and any other items are approximate and no responsibility is taken for any error, omission or mis-statement. This plan is for illustrative purposes only and should be used as such by any prospective purchaser. The services, systems and appliances shown have not been tested and no guarantee as to their operability or efficiency can be given.
Made with Metropix ©2025

OAKHILL

Oakhill Estate Agents
6 South Street, TW7 7BG

