



10 Beaumont Place

Isleworth, Isleworth

This impressive and generously proportioned three double bedroom split level maisonette is set within a sought-after development, ideally positioned for both Twickenham station and the vibrant town centre, offering an exceptional lifestyle opportunity for families and professionals alike. Spanning just over 1,100 square feet, the property boasts an extended lease of 986 years, ensuring long-term security and peace of mind. Upon entering, you are greeted by a welcoming hallway with a convenient downstairs WC and useful storage.

- Spacious Three Double Bedroom Split-Level Maisonette
- Pretty Landscaped Private Garden
- Integral Garage
- Popular Development Ideally Located For Twickenham Station & Town Centre
- Extended Lease - 986 Years Remaining
- Two Bathrooms and Downstairs WC
- Allocated Parking



SCAN HERE
FOR
PROPERTY
DETAILS



OAKHILL

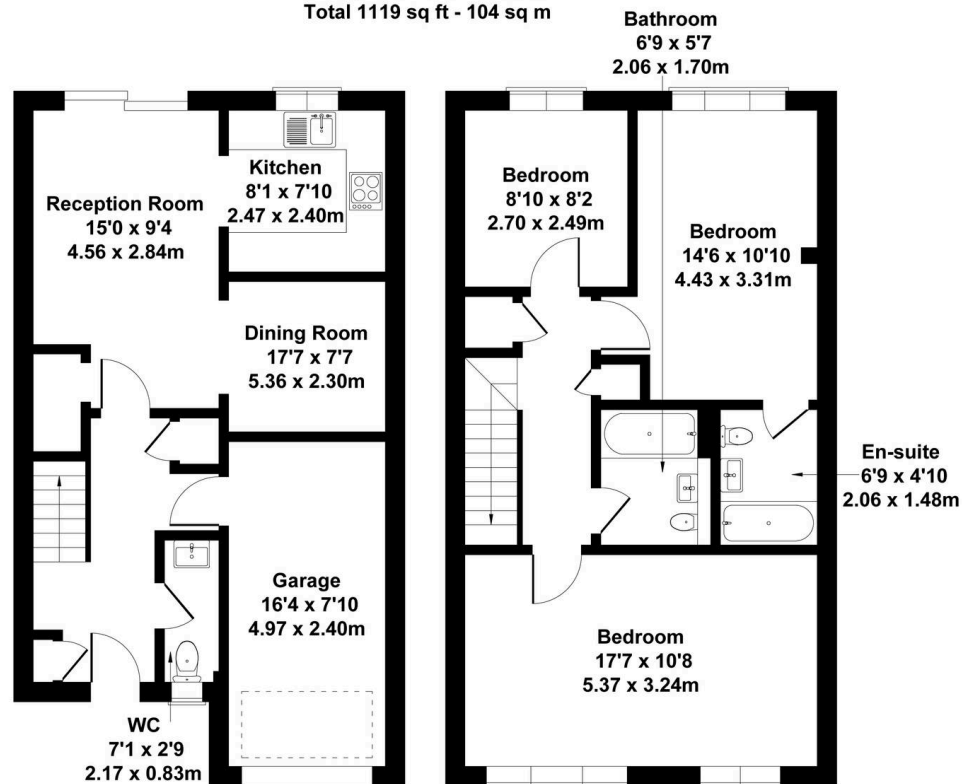
Beaumont Place, TW7 7LB

Approximate Gross Internal Area

Main House 990 sq ft - 92 sq m

Garage 129 sq ft - 12 sq m

Total 1119 sq ft - 104 sq m



GROUND FLOOR

FIRST FLOOR

This floorplan is for guidance only and does not form part of an offer or contract.
Buyers or tenants should verify all details through inspection, searches, and surveys.
Measurements are approximate and should not be relied upon for valuation or transactions.

Produced by Plan Portal.

www.evolveLondon.co.uk