



Elizabeth Gardens

Isleworth, TW7

£425,000

This well presented two double bedroom ground floor apartment is situated in the heart of Old Isleworth. Set in a hugely popular private development, the property is ideally located for access to shops, cafes and bars of Isleworth and the Thames Riverside as well as a choice of transport links and excellent local schools.

Council Tax band: C

Tenure: Leasehold

EPC Energy Efficiency Rating: C

EPC Environmental Impact Rating: C

- No Forward Chain
- Two Double Bedrooms
- Allocated Parking
- Ample Internal Storage
- Two Bathrooms
- Situated in the Heart of Old Isleworth
- Ground Floor
- Long Lease

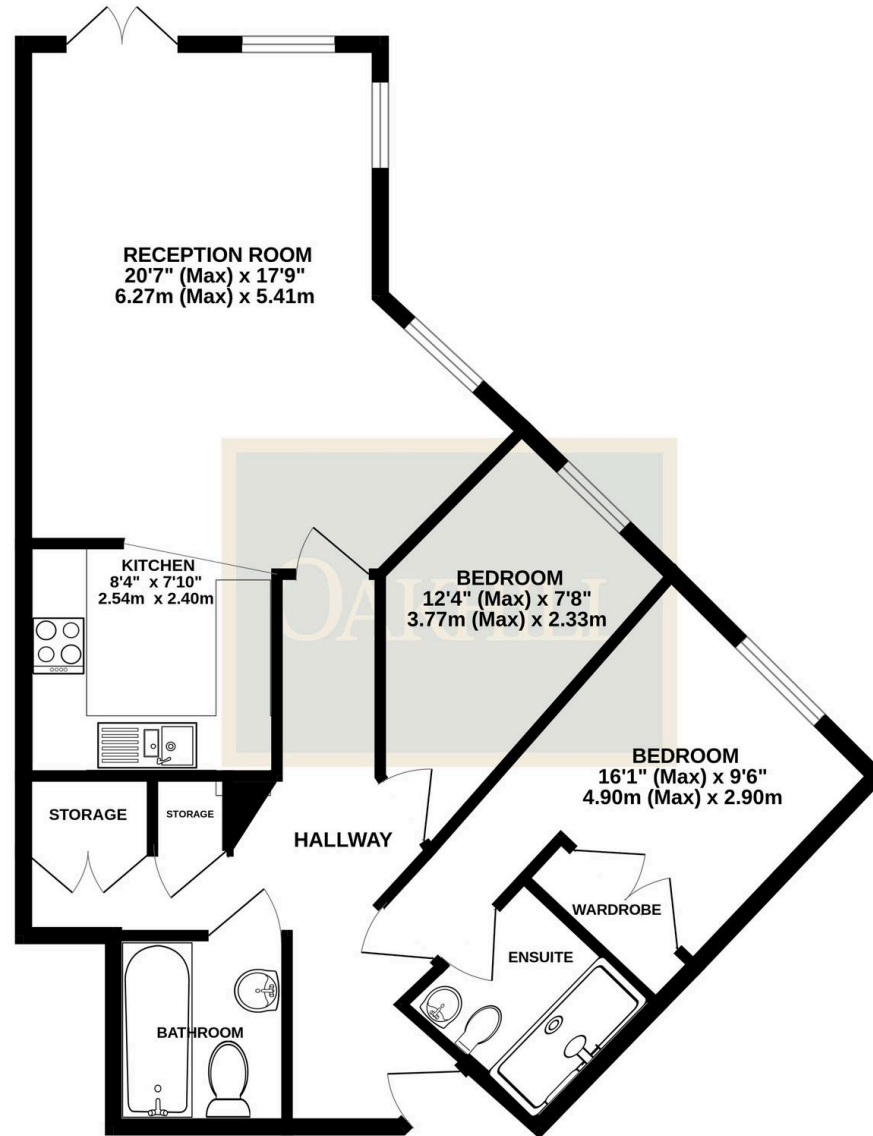


SCAN HERE
FOR
PROPERTY
DETAILS



OAKHILL

GROUND FLOOR



TOTAL FLOOR AREA : 807sq.ft. (75.0 sq.m.) approx.

Whilst every attempt has been made to ensure the accuracy of the floorplan contained here, measurements of doors, windows, rooms and any other items are approximate and no responsibility is taken for any error, omission or mis-statement. This plan is for illustrative purposes only and should be used as such by any prospective purchaser. The services, systems and appliances shown have not been tested and no guarantee as to their operability or efficiency can be given.
Made with Metropix ©2025

OAKHILL