



Madison Heights 17-27 High Street, Hounslow

Offered to the market with no onward chain is this two Bedroom, two Bathroom apartment ideally located for Hounslow town centre and Hounslow East tube station (Piccadilly Line).

Tenure: Leasehold

EPC Energy Efficiency Rating: C

EPC Environmental Impact Rating: C

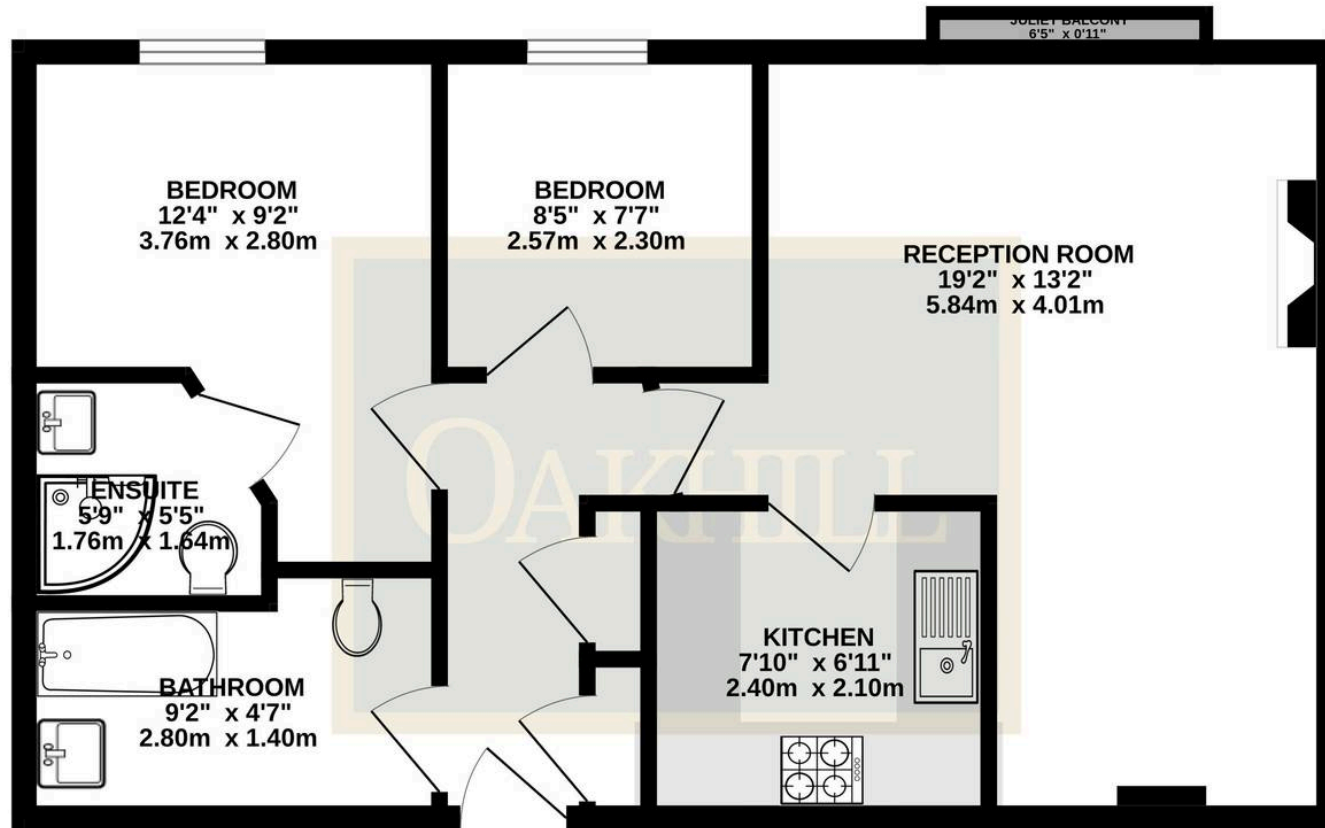
- Two Double Bedrooms
- Two Bathrooms
- Excellent Location - Close To Hounslow East Tube Station & Town Centre
- Chain Free
- Lift Access
- Beautiful Views Across London
- Long Lease
- Secure Entry System



SCAN HERE
FOR
PROPERTY
DETAILS



550 sq.ft. (51.1 sq.m.) approx.



TWO BEDROOM, TWO BATHROOM APARTMENT

TOTAL FLOOR AREA : 550 sq.ft. (51.1 sq.m.) approx.

Whilst every attempt has been made to ensure the accuracy of the floorplan contained here, measurements of doors, windows, rooms and any other items are approximate and no responsibility is taken for any error, omission or mis-statement. This plan is for illustrative purposes only and should be used as such by any prospective purchaser. The services, systems and appliances shown have not been tested and no guarantee as to their operability or efficiency can be given.
Made with Metropix ©2025

OAKHILL