



38 Moreton Avenue

Isleworth, TW7 4NW

£350,000

A beautifully presented one bedroom freehold house situated within a quiet cul-de-sac just off Thornbury Road. Rarely available and benefiting from recent updates by the current owners, the property is ideally located within a short distance of Osterley Tube station and Isleworth train station.

Tenure: Freehold

EPC Energy Efficiency Rating: D

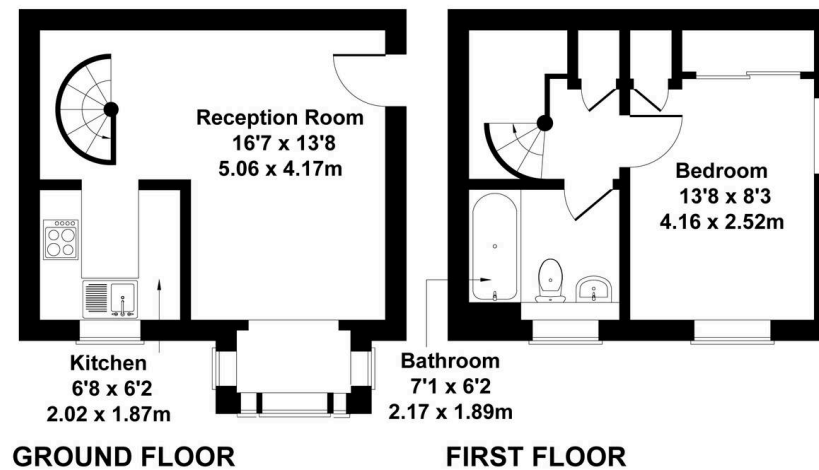
- Fabulous One Bedroom House
- Excellent Condition Throughout
- Rarely Available
- Private Allocated Parking
- Private Patio Garden
- Close to Osterley Tube Station & Isleworth Train Station
- Chain Free
- Freehold





Moreton Ave, Isleworth TW7 4NW

Approximate Gross Internal Area
Main House 463 sq ft - 43 sq m



This floorplan is for guidance only and does not form part of an offer or contract.
Buyers or tenants should verify all details through inspection, searches, and surveys.
Measurements are approximate and should not be relied upon for valuation or transactions.
Produced by The Plan Portal.
www.evovelondon.co.uk

