



Wesley Avenue, TW3

Hounslow

Situated on a popular residential road, this extended three bedroom family home is ideally located for a choice of excellent local schools, access to Hounslow Central and West tube stations and local amenities.

Council Tax band: D

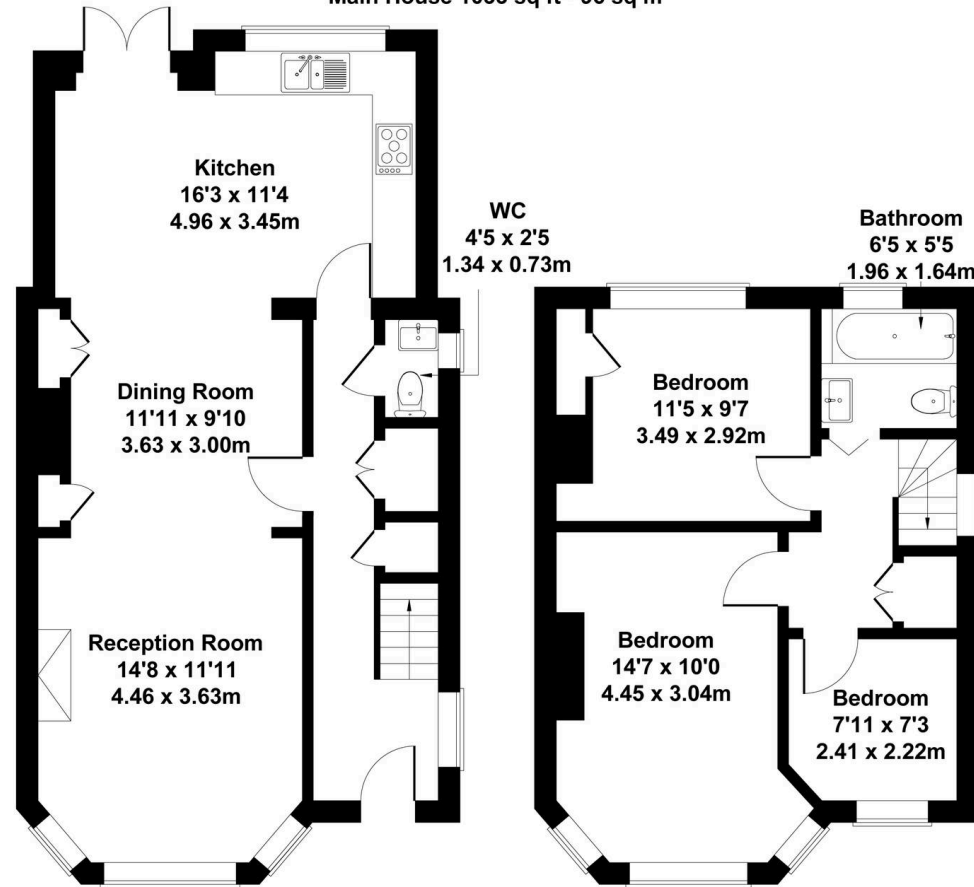
Tenure: Freehold

- Three Bedroom
- End of Terrace
- Driveway Parking
- Close to Schools
- Large Rear Garden
- Potential to Extend (STPP)



Wesley Ave, Hounslow TW3 4LU

Approximate Gross Internal Area
Main House 1033 sq ft - 96 sq m



GROUND FLOOR

FIRST FLOOR

This floorplan is for guidance only and does not form part of an offer or contract.
Buyers or tenants should verify all details through inspection, searches, and surveys.
Measurements are approximate and should not be relied upon for valuation or transactions.
Produced by Plan Portal.
www.evovelondon.co.uk