



## North Street

Isleworth, TW7 6RE

£925,000

Situated on one of the most sought after roads in Old Isleworth, this well presented four bedroom Edwardian family home is ideally located for access to a range of excellent local schools, great public transport links, the Thames Riverside and the shops, cafes and pubs of Old Isleworth.

Council Tax band: E

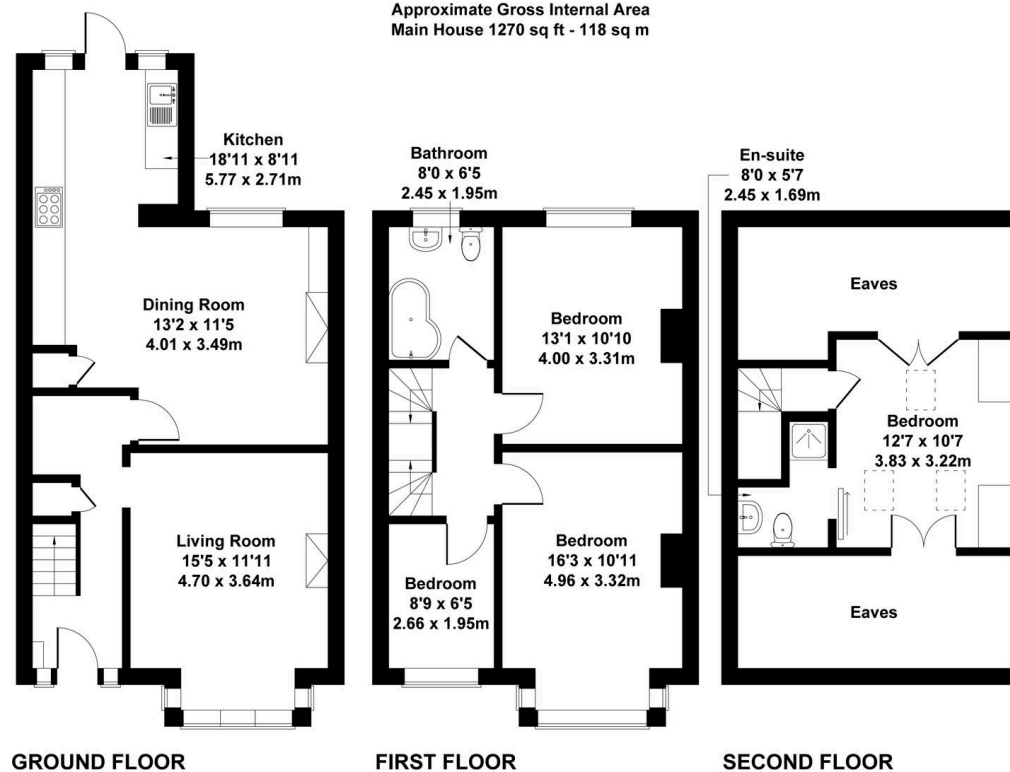
Tenure: Freehold

- Driveway Parking
- Four Bedrooms
- End of Terrace
- South Facing Rear Garden
- Edwardian Property
- Excellent Location



## North St, Isleworth TW7 6RE

Approximate Gross Internal Area  
Main House 1270 sq ft - 118 sq m



This floorplan is for guidance only and does not form part of an offer or contract.  
Buyers or tenants should verify all details through inspection, searches, and surveys.  
Measurements are approximate and should not be relied upon for valuation or transactions.  
Produced by Plan Portal.  
[www.evolveLondon.co.uk](http://www.evolveLondon.co.uk)