



Milestone Court, London Road  
Isleworth, TW7 5XQ

£330,000

Located within an exclusive gated development, this beautifully presented top floor apartment offers two spacious double bedrooms and excellent access to Syon Lane station, the beautiful Syon Park, highly regarded local schools, and a variety of amenities.

Service Charge: £2,043.84 PA

Tenure: Leasehold - Expiry **12/09/2123**

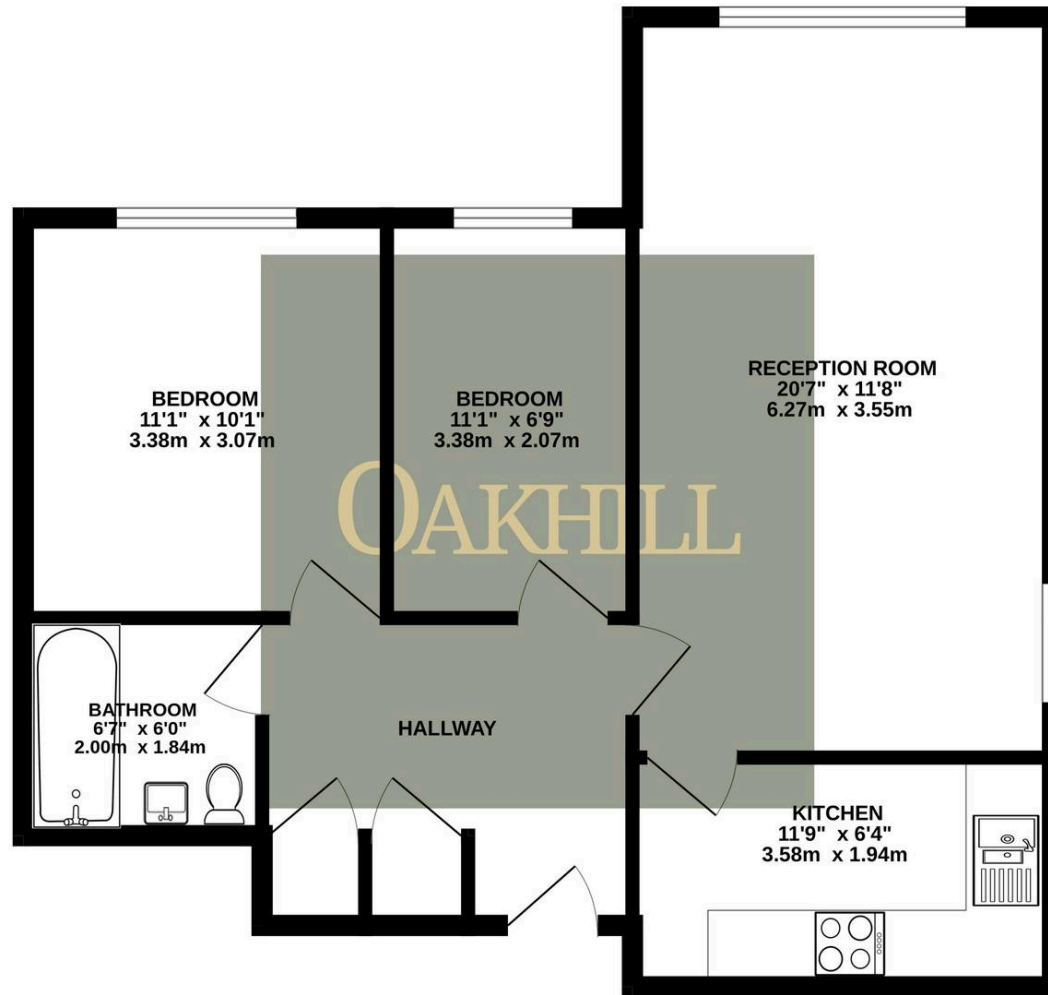
EPC Energy Efficiency Rating: C

Ground Rent: £250 PA

- Two Double Bedrooms
- Gated Allocated Parking
- Top Floor
- Large Reception Room
- Modern Kitchen
- Well Presented
- Access to loft space
- Ample Internal Storage







**OAKHILL**

TOTAL FLOOR AREA : 624sq.ft. (58.0 sq.m.) approx.

Whilst every attempt has been made to ensure the accuracy of the floorplan contained here, measurements of doors, windows, rooms and any other items are approximate and no responsibility is taken for any error, omission or mis-statement. This plan is for illustrative purposes only and should be used as such by any prospective purchaser. The services, systems and appliances shown have not been tested and no guarantee as to their operability or efficiency can be given.  
Made with Metropix 62025