



## Worton Road

Isleworth, TW7 6HJ

£675,000

Situated within a short walk of Isleworth train station, Hounslow East tube station, a range of excellent local schools and amenities, this four bedroom family home is offered to the market with no forward chain

Council Tax band: E

Tenure: Freehold

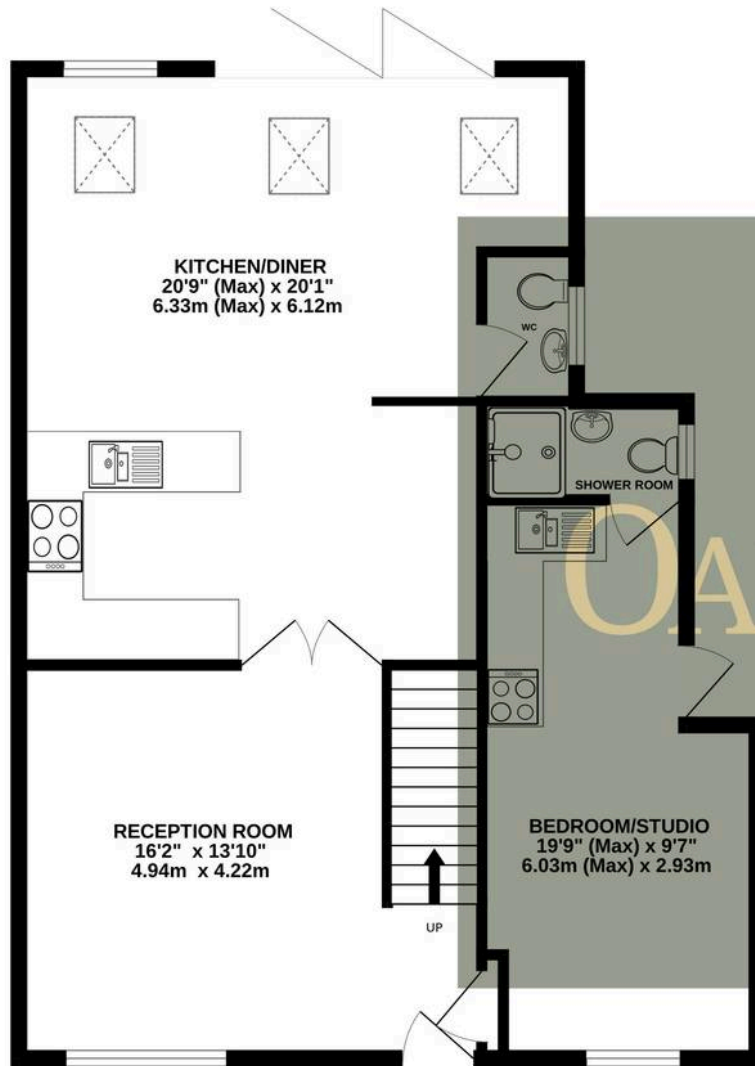
EPC Energy Efficiency Rating: D

- No Forward Chain
- Four Bedrooms
- Driveway Parking
- Three Bathrooms
- Large South Facing Rear Garden
- Spacious Kitchen/Diner

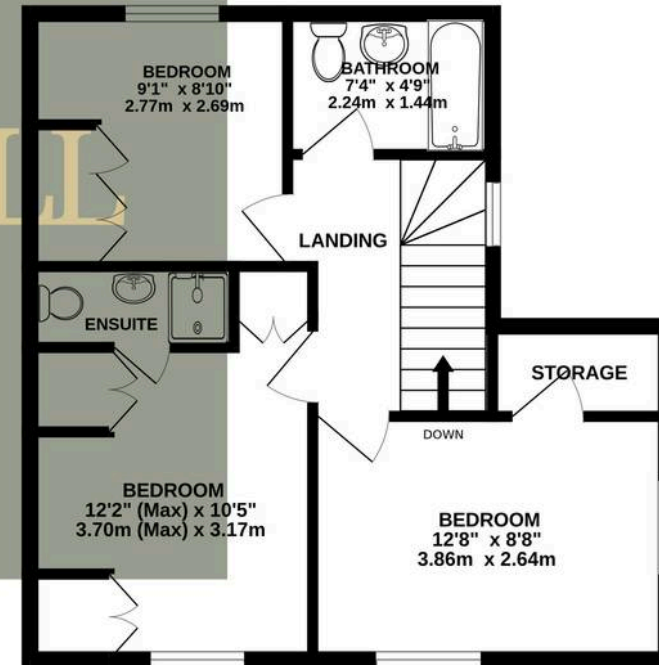




GROUND FLOOR



1ST FLOOR



TOTAL FLOOR AREA : 1242 sq.ft. (115.4 sq.m.) approx.

Whilst every attempt has been made to ensure the accuracy of the floorplan contained here, measurements of doors, windows, rooms and any other items are approximate and no responsibility is taken for any error, omission or mis-statement. This plan is for illustrative purposes only and should be used as such by any prospective purchaser. The services, systems and appliances shown have not been tested and no guarantee as to their operability or efficiency can be given.  
Made with Metropix ©2025

OAKHILL