



Flat 3

Richardson House, Isleworth

£315,000

SALE AGREED BY OAKHILL, SIMILAR PROPERTIES REQUIRED. This well presented two double bedroom ground floor apartment is situated in the ever popular Malting development, just a short walk from Isleworth train station, the cafes, bars and shops of Isleworth village and a range of excellent local schools.

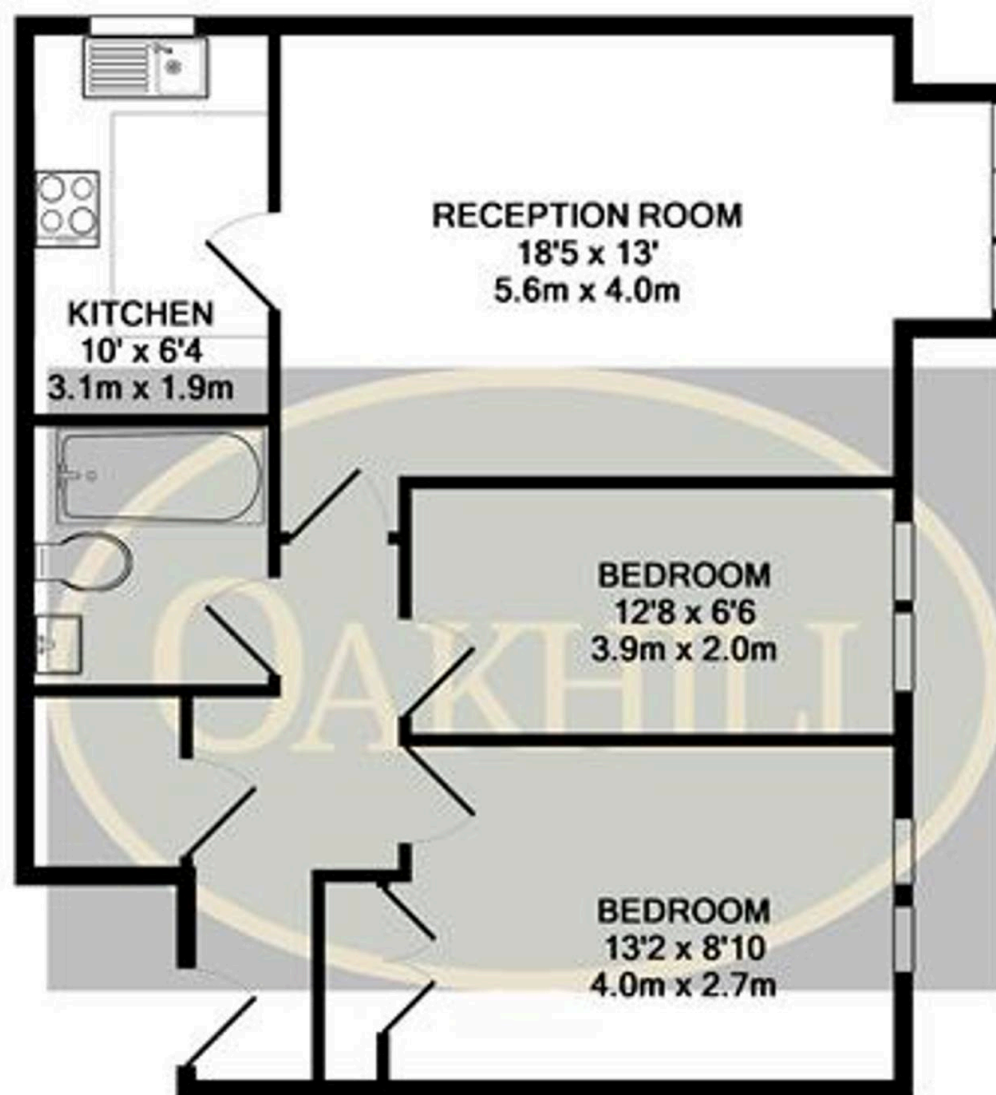
Council Tax band: D

Tenure: Leasehold

EPC Energy Efficiency Rating: C

- No Forward Chain
- Two Double Bedrooms
- Allocated Parking
- Ground Floor
- Excellent Location
- Ample Internal Storage





TOTAL APPROX. FLOOR AREA 593 SQ.FT. (55.1 SQ.M.)

Whilst every attempt has been made to ensure the accuracy of the floor plan contained here, measurements of doors, windows, rooms and any other items are approximate and no responsibility is taken for any error, omission, or mis-statement. This plan is for illustrative purposes only and should be used as such by any prospective purchaser. The services, systems and appliances shown have not been tested and no guarantee as to their operability or efficiency can be given.

Made with Metropix ©2019

OAKHILL