



Redesdale Gardens, Isleworth – TW7

£420,000 Leasehold

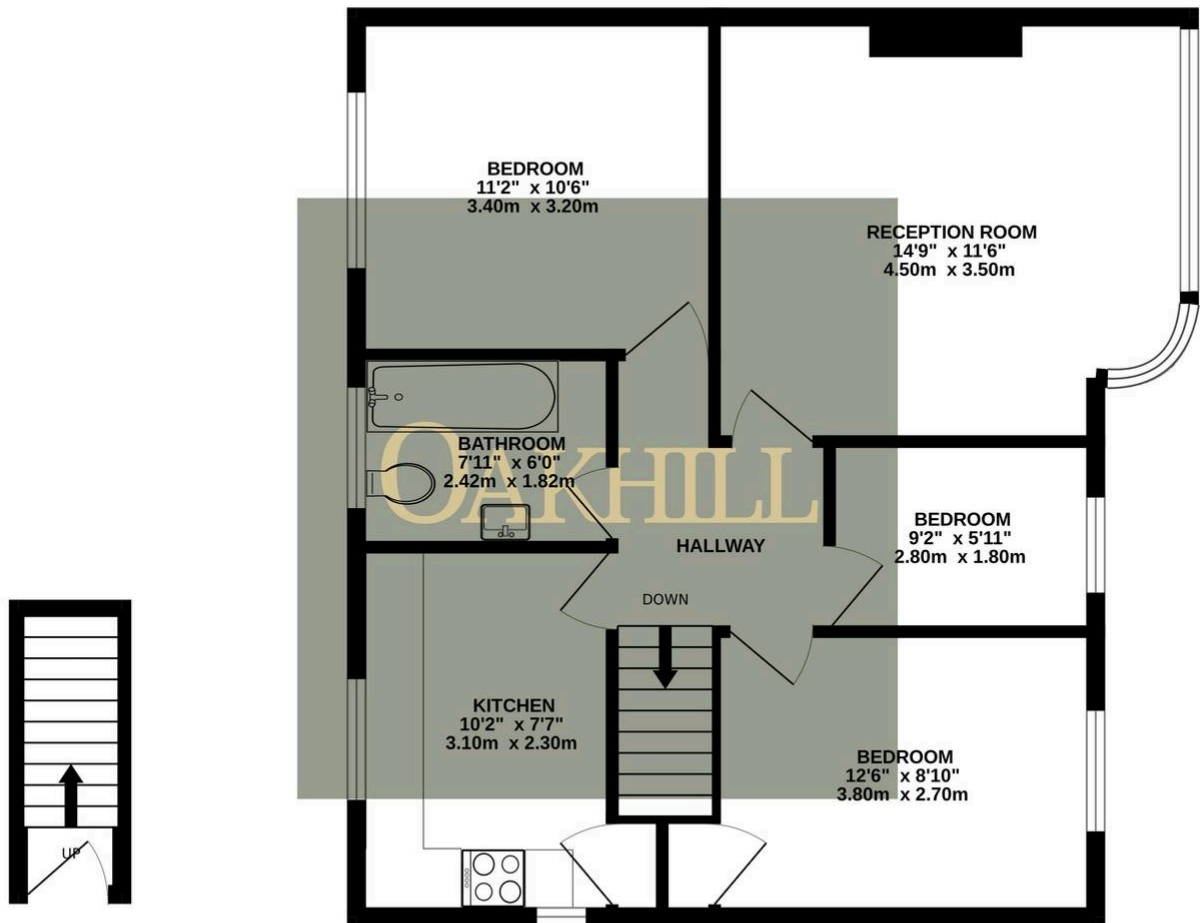
This well presented three-bedroom first floor maisonette is offered to the market with no forward chain. Ideally situated within a short walk of Syon Lane train station, Osterley Tube station, a range of excellent local schools and amenities, the property benefits from its own private entrance way, a bright and spacious reception room with bay window, two good sized double bedrooms, a further single bedroom/home office, modern family bathroom and a modern fitted kitchen. The property also benefits from a large private rear garden, a long lease in excess of 900 years, gas central heating and access to loft space.

OAKHILL



GROUND FLOOR

1ST FLOOR



Whilst every attempt has been made to ensure the accuracy of the floorplan contained here, measurements of doors, windows, rooms and any other items are approximate and no responsibility is taken for any error, omission or mis-statement. This plan is for illustrative purposes only and should be used as such by any prospective purchaser. The services, systems and appliances shown have not been tested and no guarantee as to their operability or efficiency can be given.
Made with Metropix ©2025

OAKHILL

Oakhill Estate Agents
6 South Street, TW7 7BG

