



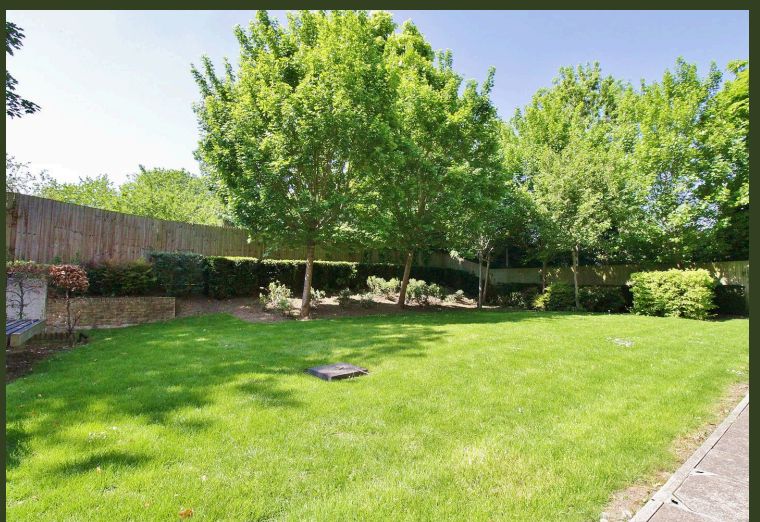
## Shelsley House, Frazer Nash Close, Isleworth – TW7

£325,000 Leasehold

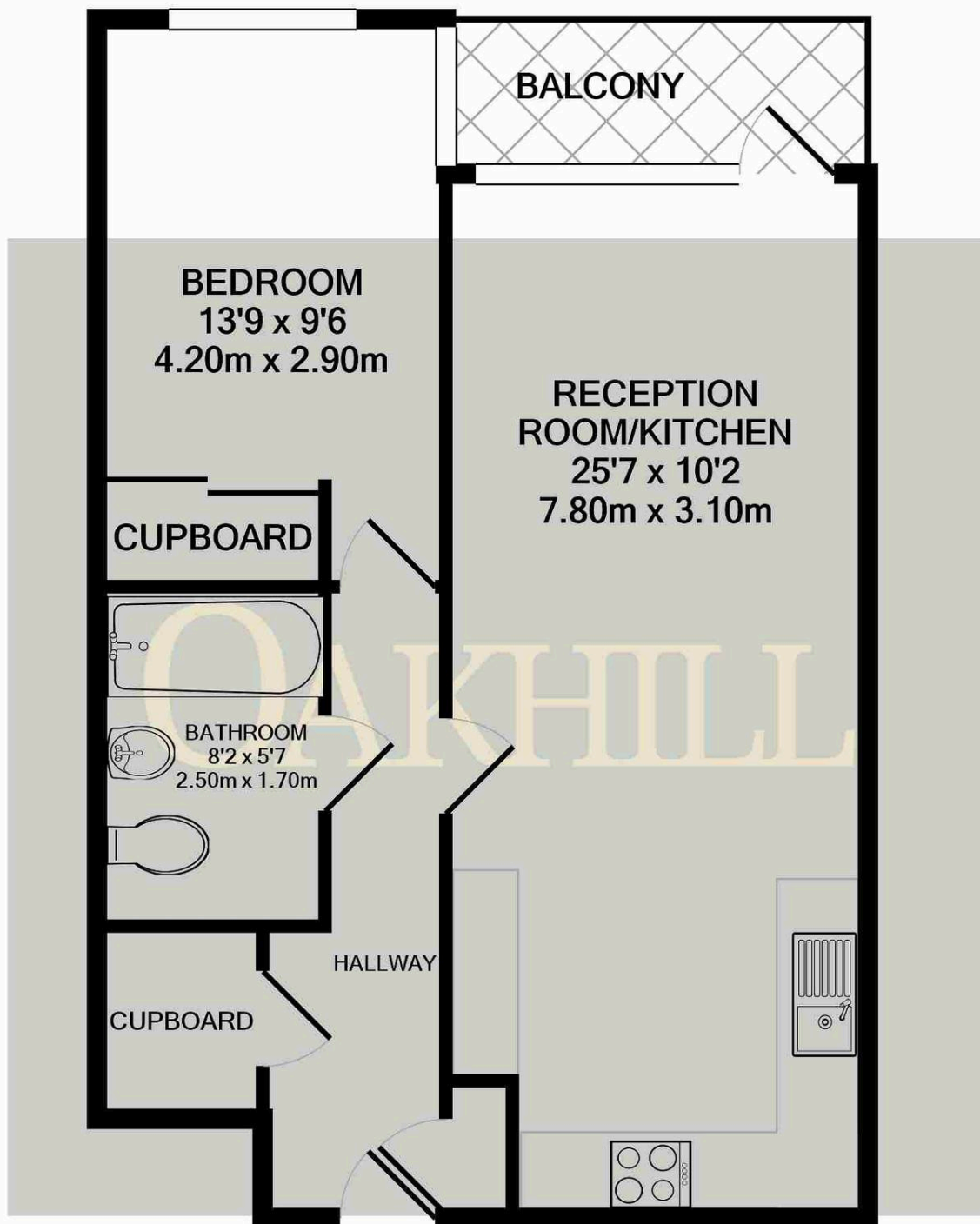
Situated in a popular modern development, this well presented first floor one bedroom apartment with allocated parking is offered to the market with no forward chain. Ideally located for Isleworth train station and local amenities, the property offers a large reception room with open plan fitted kitchen and direct access to a private balcony, spacious modern bathroom and dual aspect double bedroom with built in wardrobes. The property benefits from a long lease and underfloor heating throughout.

OAKHILL









Whilst every attempt has been made to ensure the accuracy of the floor plan contained here, measurements of doors, windows, rooms and any other items are approximate and no responsibility is taken for any error, omission, or mis-statement. This plan is for illustrative purposes only and should be used as such by any prospective purchaser. The services, systems and appliances shown have not been tested and no guarantee as to their operability or efficiency can be given  
Made with Metropix ©2024

OAKHILL

Oakhill Estate Agents  
6 South Street, Isleworth, TW7 7BG

