



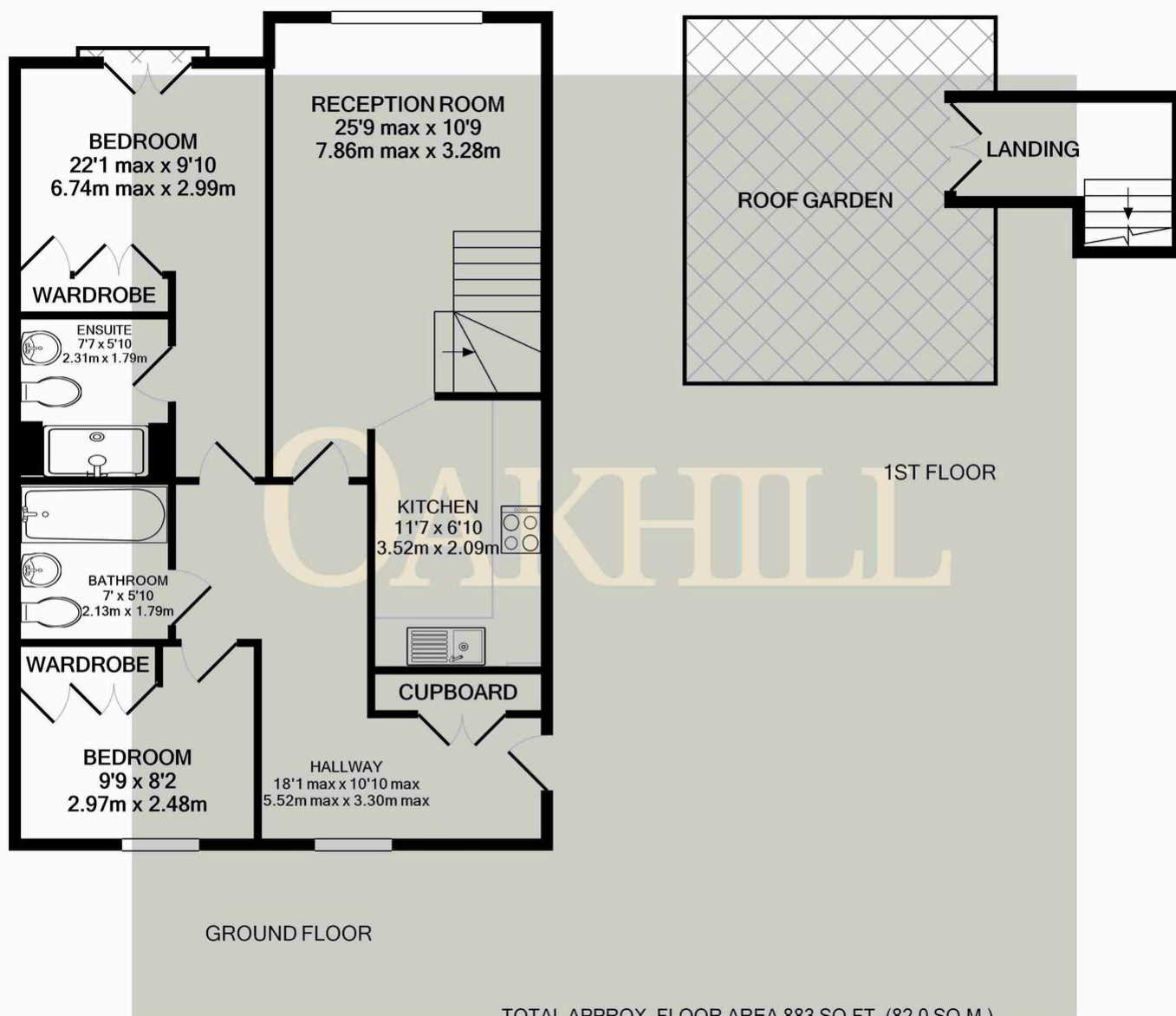
## Holme Court, Twickenham Road – TW7

£475,000 Leasehold

This stunning two bedroom apartment with a split level roof terrace is situated in a private gated development with access to excellent transport links, local amenities and local schools. The property features a large and bright welcoming hallway with plenty of built in storage, large master bedroom with an en-suite shower room, built in wardrobes and a Juliette balcony, second double bedroom with built in wardrobes, modern bathroom, modern good sized kitchen, spacious reception with a vaulted ceiling and mezzanine landing leading to the beautiful private roof terrace, which provides excellent entertaining space or a place to relax. The property also benefits from allocated parking and is offered with no forward chain.







Whilst every attempt has been made to ensure the accuracy of the floor plan contained here, measurements of doors, windows, rooms and any other items are approximate and no responsibility is taken for any error, omission, or mis-statement. This plan is for illustrative purposes only and should be used as such by any prospective purchaser. The services, systems and appliances shown have not been tested and no guarantee as to their operability or efficiency can be given  
Made with Metropix ©2024

OAKHILL