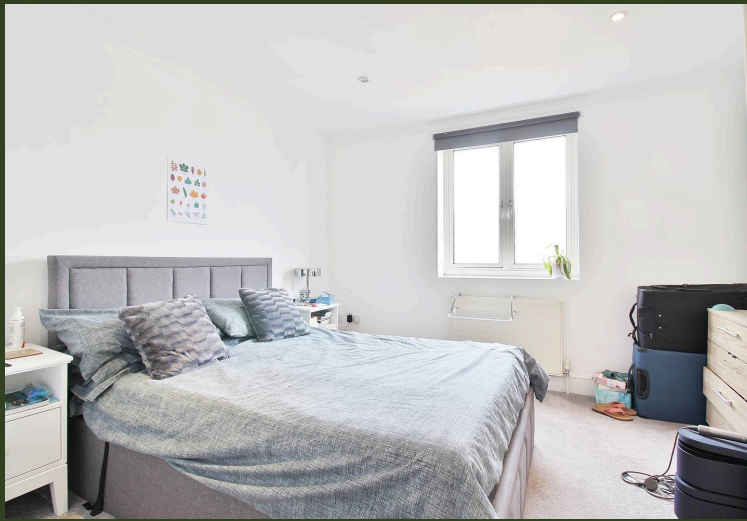


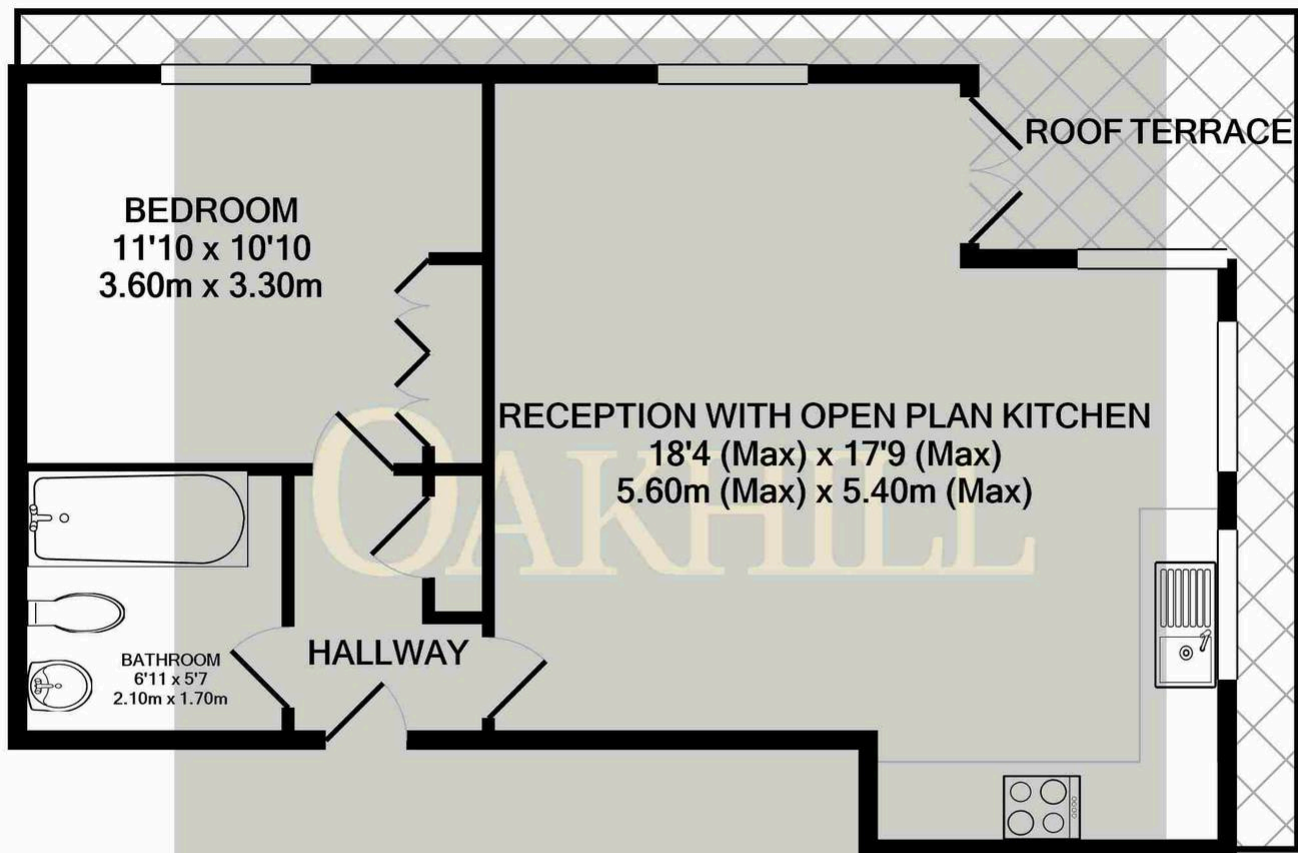
Lancaster House, Borough Road, Isleworth, TW7

£300,000 Leasehold

Situated in a stunning gated development with a short distance of Isleworth train station, Osterley tube station and local amenities, this bright, spacious top floor apartment is offered to the market with no forward chain. The property features a large open plan living space with access to a good sized private terrace, modern kitchen with built in appliances, spacious double bedroom with built in wardrobes and a modern bathroom. Further benefits include ample internal storage, well kept communal areas and an allocated parking space.

OAKHILL





Whilst every attempt has been made to ensure the accuracy of the floor plan contained here, measurements of doors, windows, rooms and any other items are approximate and no responsibility is taken for any error, omission, or mis-statement. This plan is for illustrative purposes only and should be used as such by any prospective purchaser. The services, systems and appliances shown have not been tested and no guarantee as to their operability or efficiency can be given

Made with Metropix ©2023

OAKHILL

Oakhill Estate Agents
6 South Street, Isleworth, TW7 7BG

