

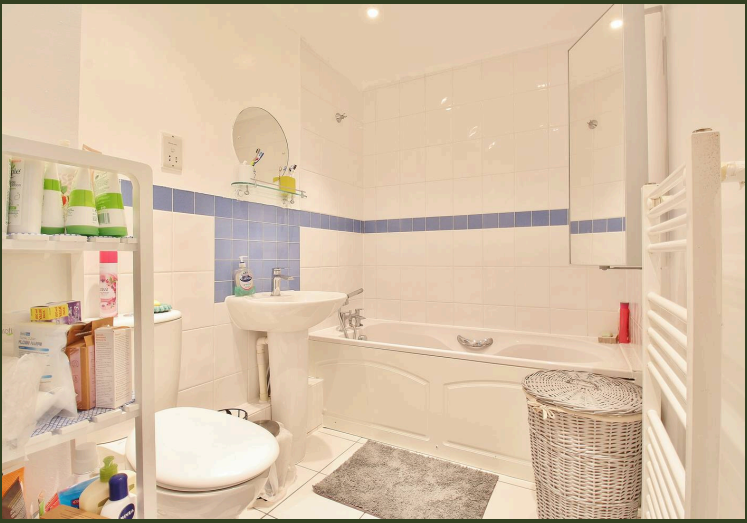


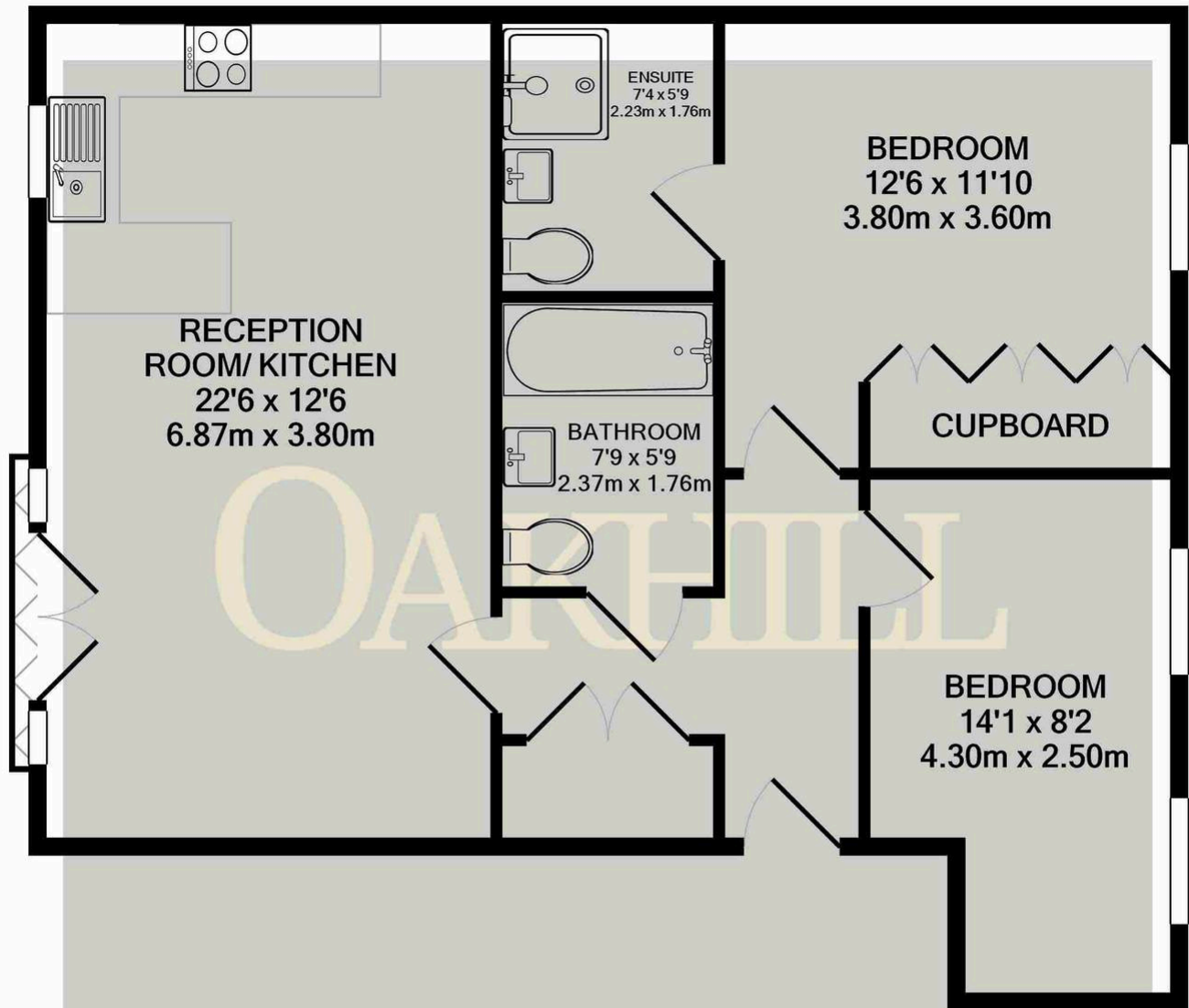
White Lodge Close, Isleworth – TW7

£375,000 – Leasehold

This well presented, spacious two double bedroom first floor apartment is located in a popular development in the heart of Isleworth, with access to excellent transport links, local schools and amenities. The property offers a large living space with Juliette balcony, open plan kitchen with integrated appliances, two double bedrooms, one with en-suite shower room, family bathroom, and ample storage throughout. The property also benefits from allocated parking, double glazing throughout and gas central heating.

OAKHILL





Whilst every attempt has been made to ensure the accuracy of the floor plan contained here, measurements of doors, windows, rooms and any other items are approximate and no responsibility is taken for any error, omission, or mis-statement. This plan is for illustrative purposes only and should be used as such by any prospective purchaser. The services, systems and appliances shown have not been tested and no guarantee as to their operability or efficiency can be given
Made with Metropix ©2024

OAKHILL

Oakhill Estate Agents
6 South Street, Isleworth, TW7 7BG

