



## Frazer Nash Close, Isleworth – TW7

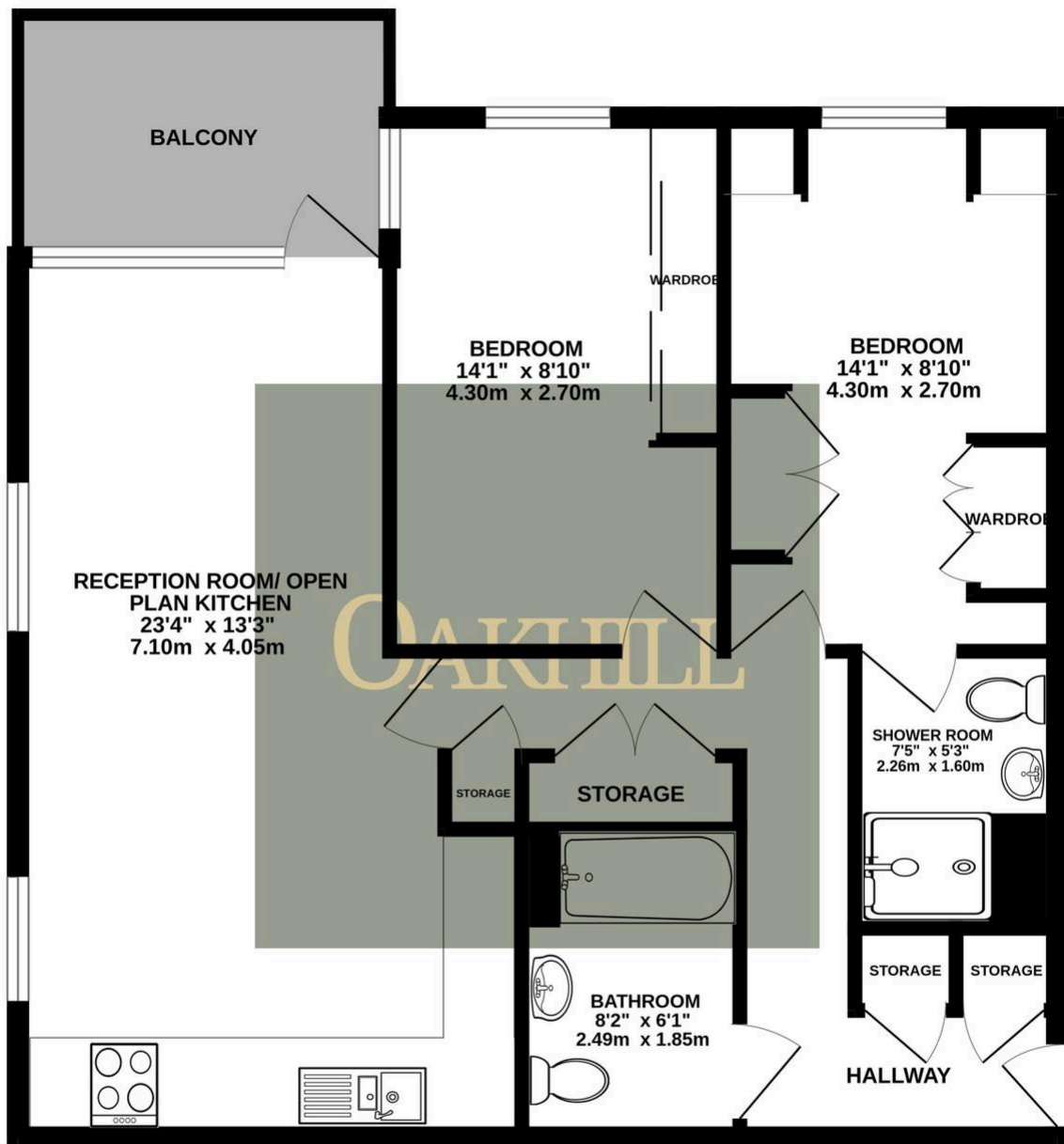
£450,000 Leasehold

Situated in popular Frazer Nash Close development, this bright and modern two double bedroom fourth floor apartment is ideally located just a short walk from Isleworth train station, a choice of excellent local schools and local amenities. The property offers a spacious reception room, with modern fitted kitchen and access to a private balcony, master bedroom with built in wardrobes and an en-suite shower room, second double bedroom with built in wardrobes and a luxury family bathroom. The property also benefits from an allocated parking space, ample internal storage, a long lease, under floor heating, lift access and well kept communal areas.

OAKHILL







Whilst every attempt has been made to ensure the accuracy of the floorplan contained here, measurements of doors, windows, rooms and any other items are approximate and no responsibility is taken for any error, omission or mis-statement. This plan is for illustrative purposes only and should be used as such by any prospective purchaser. The services, systems and appliances shown have not been tested and no guarantee as to their operability or efficiency can be given.

Made with Metropix ©2025

OAKHILL

Oakhill Estate Agents  
6 South Street, TW7 7BG

