

## Sabrina House, Shrewsbury Walk – TW7

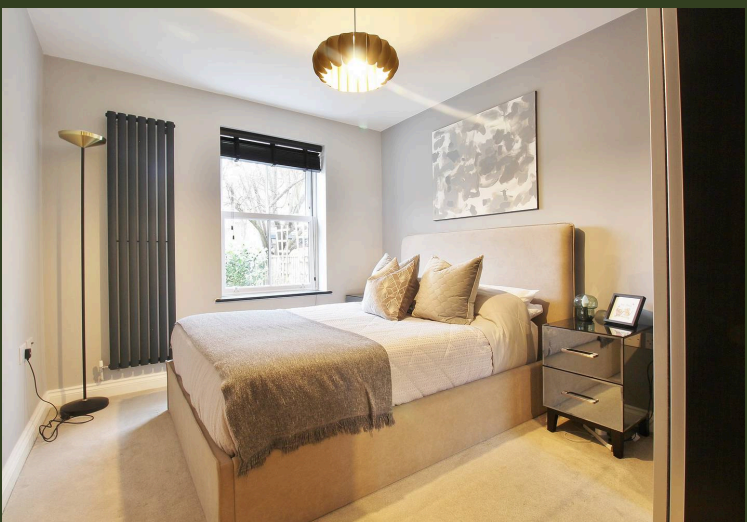
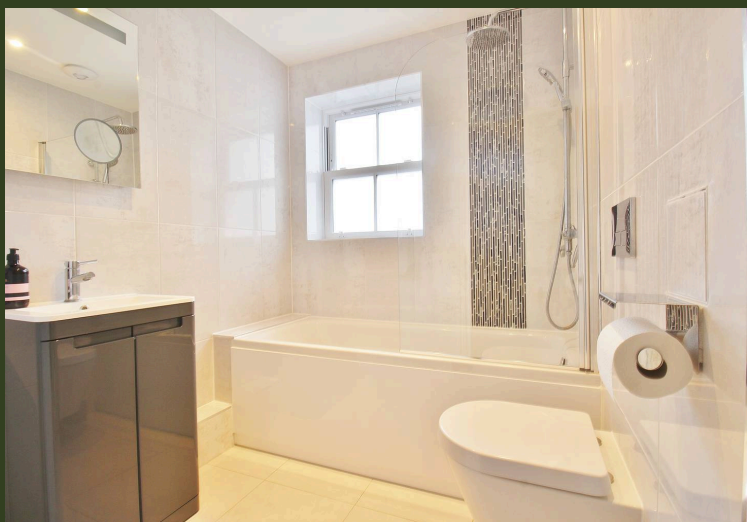
£375,000 Leasehold

OAKHILL

This beautifully presented one-bedroom apartment is located in the heart of Old Isleworth, offering convenient access to a wealth of local amenities. Nearby you'll find a great selection of shops, greengrocers, restaurants, and the picturesque Thames Riverside. Syon Park, with its award-winning garden centre, is just a short walk away, and the area is also well-served by a number of primary schools. St Margaret's is within easy reach, while Richmond is within walking distance along the river, and convenient bus routes are readily available.

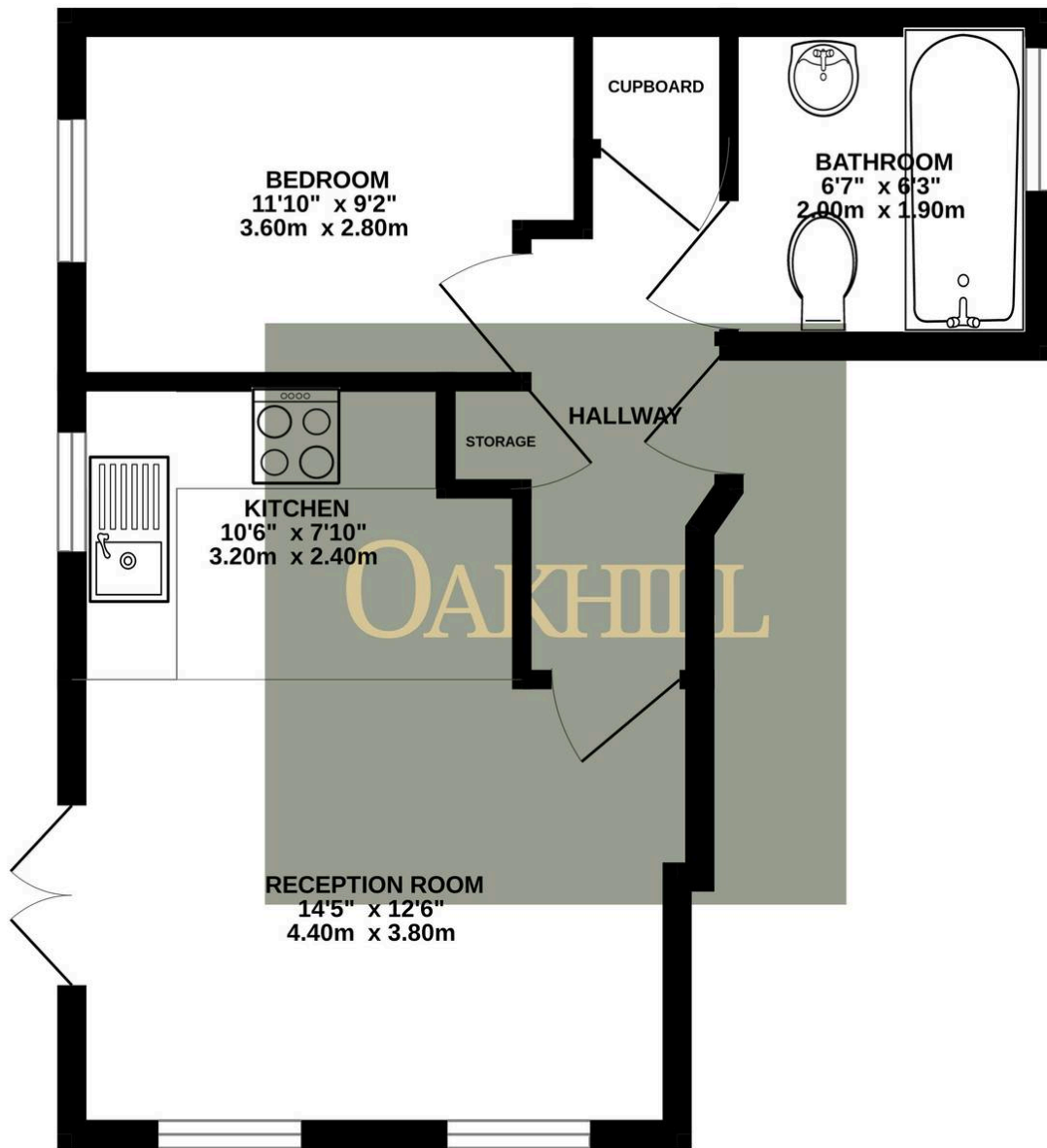
The property itself boasts a large double bedroom, a luxury bathroom, a modern fitted kitchen, and a spacious reception room. A large, private, low-maintenance garden with direct access from the property provides a tranquil outdoor space, complemented by allocated off-street parking. Further benefits include a long lease and access to a communal roof terrace.







## GROUND FLOOR



Whilst every attempt has been made to ensure the accuracy of the floorplan contained here, measurements of doors, windows, rooms and any other items are approximate and no responsibility is taken for any error, omission or mis-statement. This plan is for illustrative purposes only and should be used as such by any prospective purchaser. The services, systems and appliances shown have not been tested and no guarantee as to their operability or efficiency can be given.  
Made with Metropix ©2025

OAKHILL

