



Meadowbrook Court, Worton Road, Isleworth – TW7

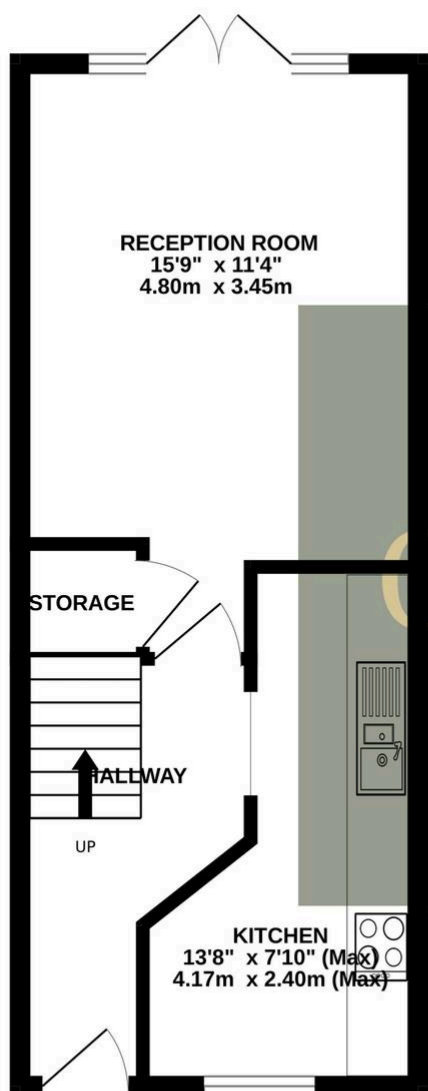
Offers in Excess of £425,000 Freehold

Situated in a popular gated development, this two double bedroom home is ideally located for access to public transport, local schools and amenities and is offered to the market with no forward chain. The ground floor offers a welcoming hallway, good sized kitchen and spacious reception room with French doors leading to the rear garden. The first floor offers a double bedroom with built in wardrobe and en-suite shower room, second double bedroom and a family bathroom. Externally the property benefits from a well kept front garden, a spacious south facing rear garden and allocated parking in a private car port. The property also benefits from gas central heating, double glazing ample internal storage and access to loft space. There is potential to extend the property subject to the relevant planning consent.

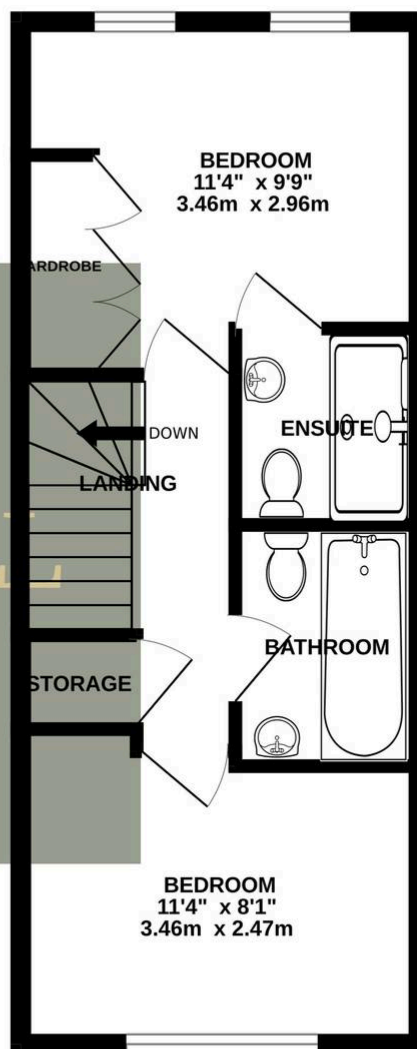
OAKHILL



GROUND FLOOR



1ST FLOOR



Whilst every attempt has been made to ensure the accuracy of the floorplan contained here, measurements of doors, windows, rooms and any other items are approximate and no responsibility is taken for any error, omission or mis-statement. This plan is for illustrative purposes only and should be used as such by any prospective purchaser. The services, systems and appliances shown have not been tested and no guarantee as to their operability or efficiency can be given.

Made with Metropix ©2025

OAKHILL

Oakhill Estate Agents

6 South Street, TW7 7BG

