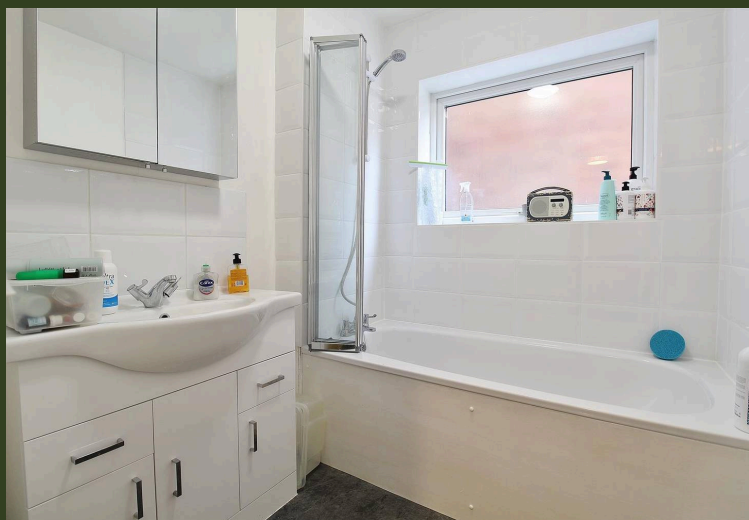
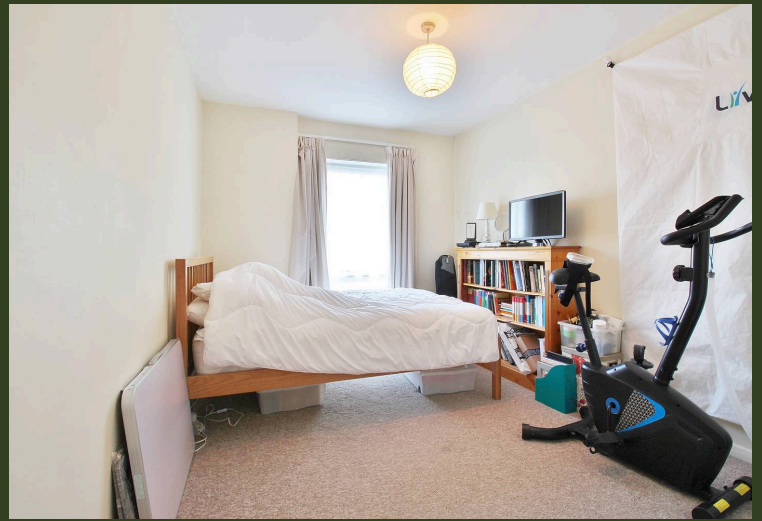


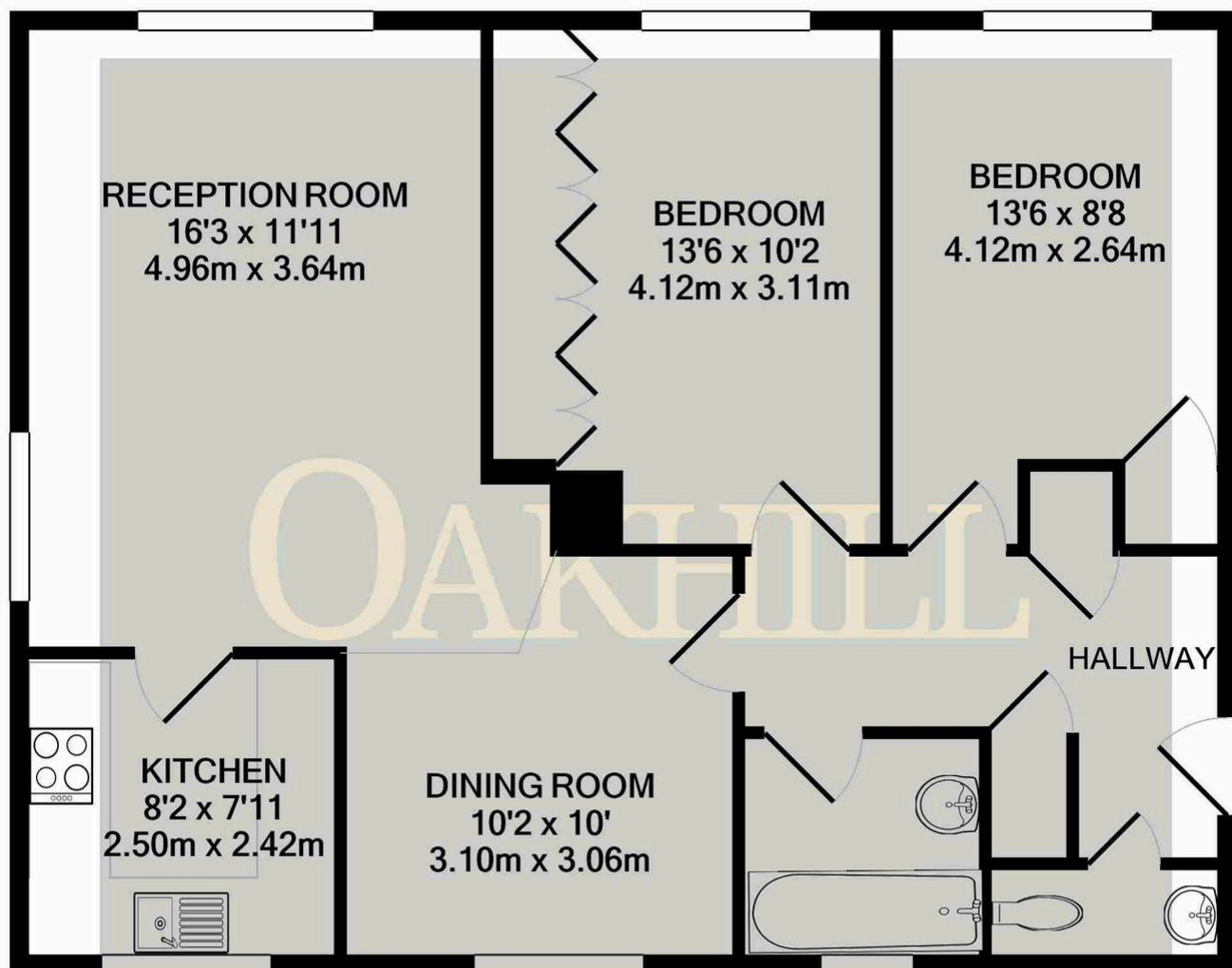
Deborah Close, Isleworth – TW7 4NY

£365,000 Leasehold

This spacious two-bedroom first floor flat is located in a quiet development and also benefits from a private garage. Offering plenty of natural light, the property is well presented throughout. The property offers two double bedrooms, both with built in wardrobes, newly fitted bathroom, separate WC, dining room, large dual aspect reception room and separate newly fitted kitchen. Situated close to Isleworth Train Station, Osterley Tube Station, Osterley Park, local schools and amenities the property also benefits from a long lease and lift access.

OAKHILL





Whilst every attempt has been made to ensure the accuracy of the floor plan contained here, measurements of doors, windows, rooms and any other items are approximate and no responsibility is taken for any error, omission, or mis-statement. This plan is for illustrative purposes only and should be used as such by any prospective purchaser. The services, systems and appliances shown have not been tested and no guarantee as to their operability or efficiency can be given
Made with Metropix ©2022

OAKHILL

