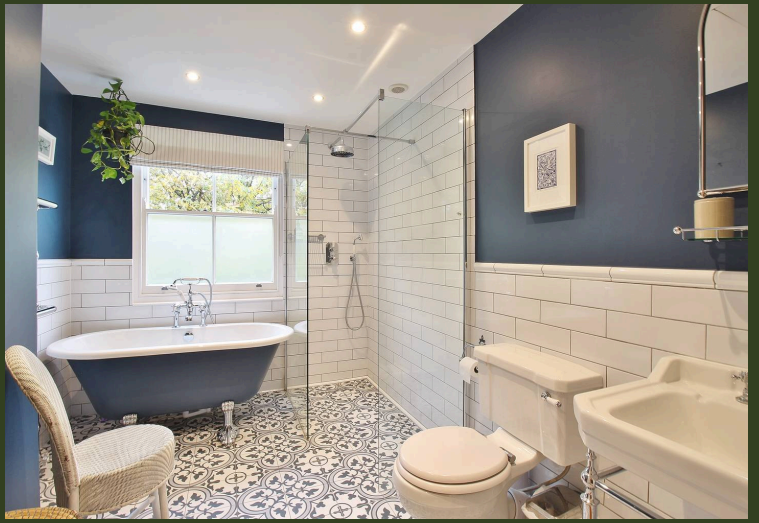


OAKHILL

Newton Road, Isleworth – TW7 6QD

£700,000 Guide Price

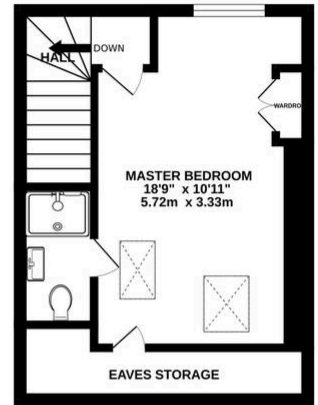
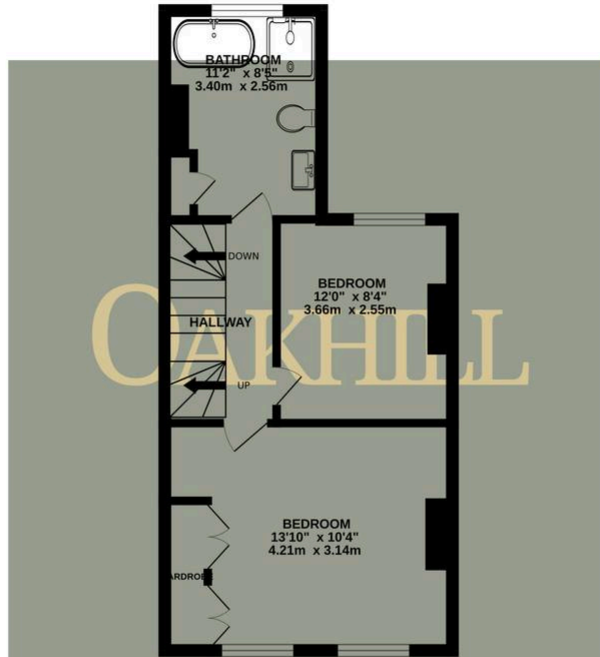
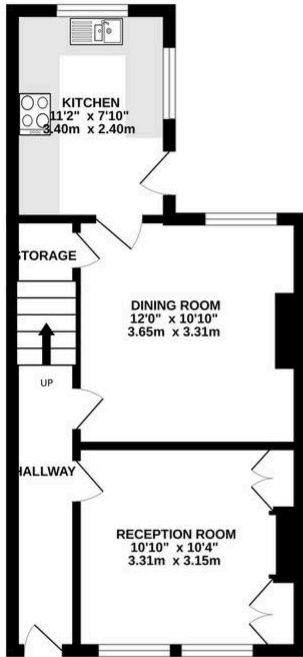
Situated on a prime residential road, this beautifully presented three double bedroom Victorian home is ideally located for access to Isleworth train station, a choice of excellent local schools and local amenities. Offered to the market with no forward chain, the ground floor offers a welcoming hallway, front reception room with a feature fire place, dining room and a high end, modern kitchen, with access to the rear garden. The first floor offers two double bedrooms and a luxury four-piece family bathroom. The loft has been converted to provide a master bedroom with en-suite shower room. Externally the property offers a South West facing rear garden with rear access. The property also benefits from gas central heating, double glazing and resident permit parking on the street.



GROUND FLOOR

1ST FLOOR

2ND FLOOR



Whilst every attempt has been made to ensure the accuracy of the floorplan contained here, measurements of doors, windows, rooms and any other items are approximate and no responsibility is taken for any error, omission or mis-statement. This plan is for illustrative purposes only and should be used as such by any prospective purchaser. The services, systems and appliances shown have not been tested and no guarantee as to their operability or efficiency can be given.
 Made with Metropix ©2024



