

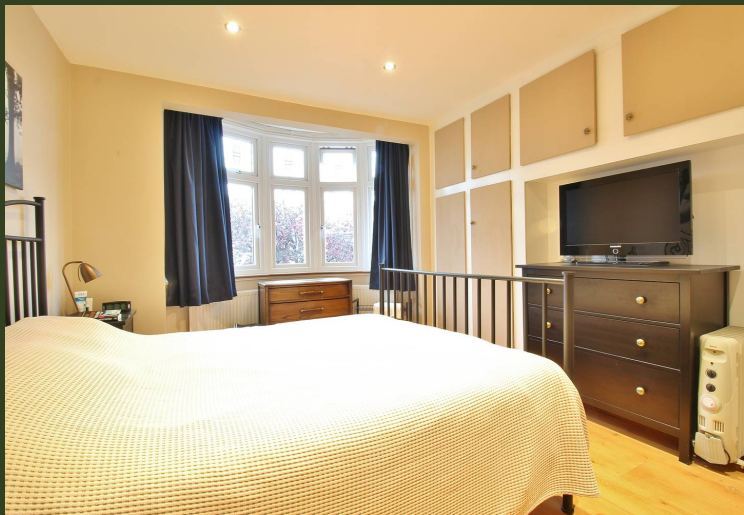


Harewood Road, Isleworth – TW7

£995,000 Freehold

Situated in popular residential road, this beautifully presented four/five bedroom semi-detached family home is a gem waiting to be discovered. Ideally located for access to Syon Lane train station, Osterley Tube station, a range of excellent local schools and amenities this property has been extended at the side and into the loft and finished to a high standard. Stepping in through the front door you are greeted by a welcoming hallway leading through to a large open plan living space. Offering a front reception room with bay window, dining area with bi-folding doors leading out to the large West facing rear garden and a modern kitchen fitted with top of the range appliances.

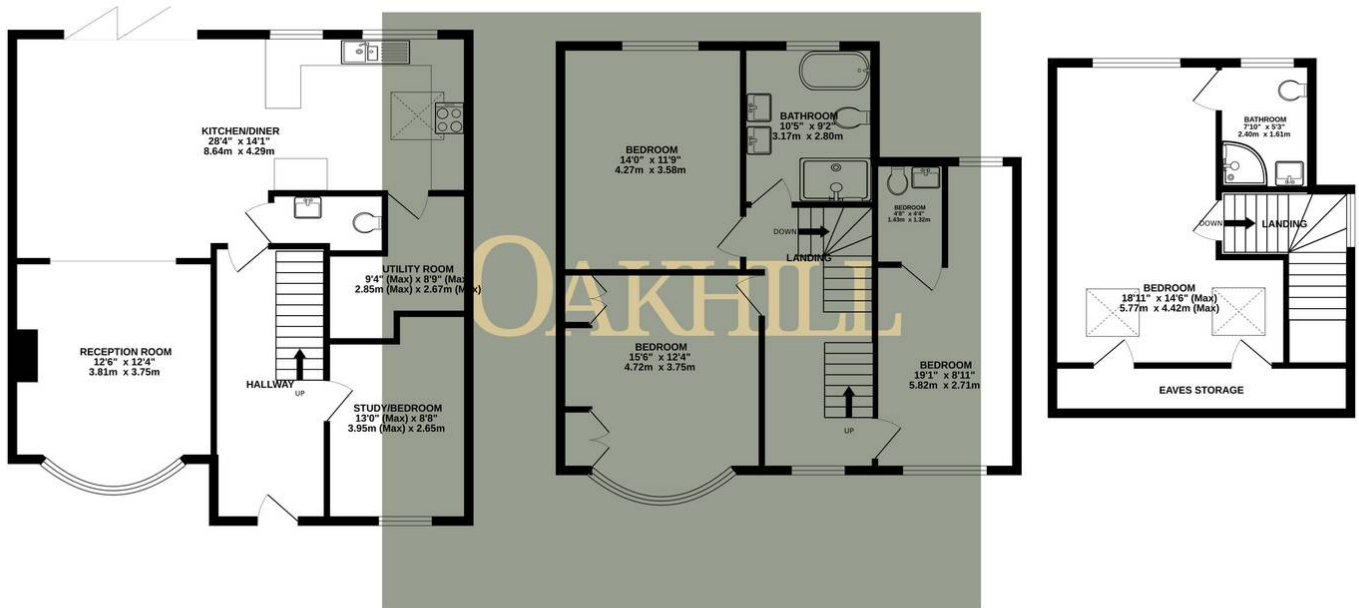
The ground floor also offers a good sized utility room, WC and a study/bedroom. The first floor offers a luxury family bathroom, master bedroom with bay window and fitted wardrobes and two further double bedrooms, one of which comes with a private WC. The second floor has been extended to provide another double bedroom complete with an en-suite shower room and eaves storage. Externally the property offers a large, well kept West facing rear garden and driveway parking for two cars. The property also benefits from underfloor heating throughout the ground floor and in all the bathrooms, double glazing throughout and ample internal storage.



GROUND FLOOR

1ST FLOOR

2ND FLOOR



Whilst every attempt has been made to ensure the accuracy of the floorplan contained here, measurements of doors, windows, rooms and any other items are approximate and no responsibility is taken for any error, omission or mis-statement. This plan is for illustrative purposes only and should be used as such by any prospective purchaser. The services, systems and appliances shown have not been tested and no guarantee as to their operability or efficiency can be given.
 Made with Metropix ©2024



Oakhill Estate Agents

6 South Street, TW7 7BG

OAKHILL