

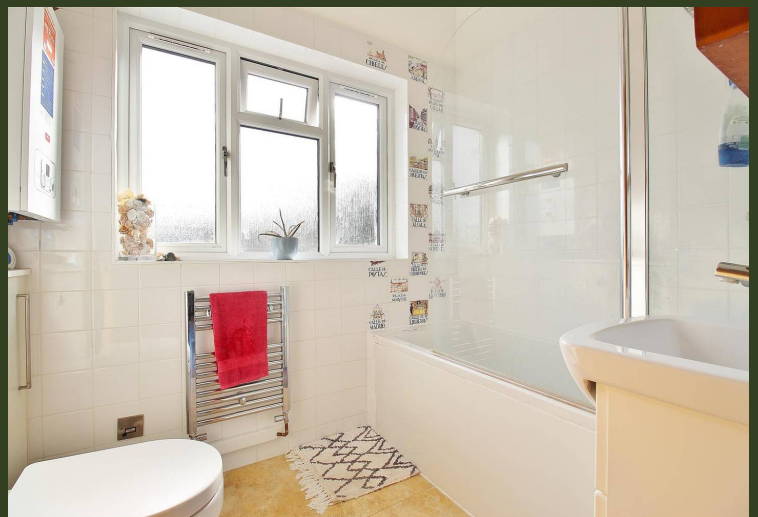
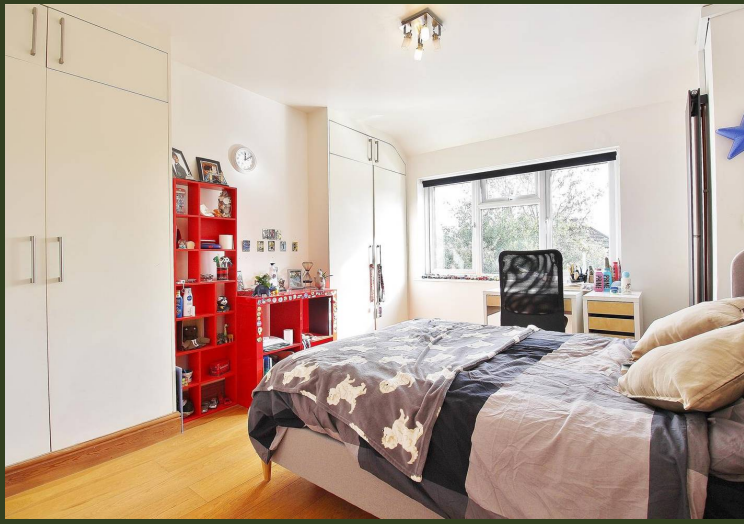


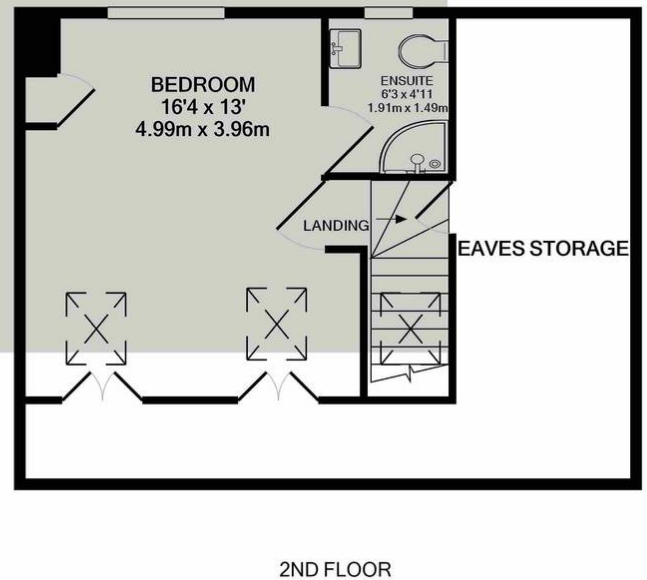
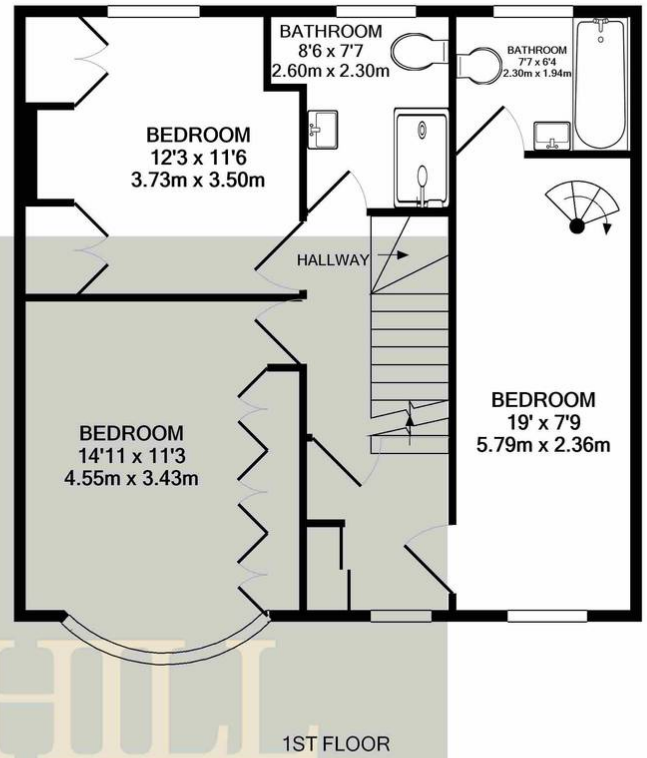
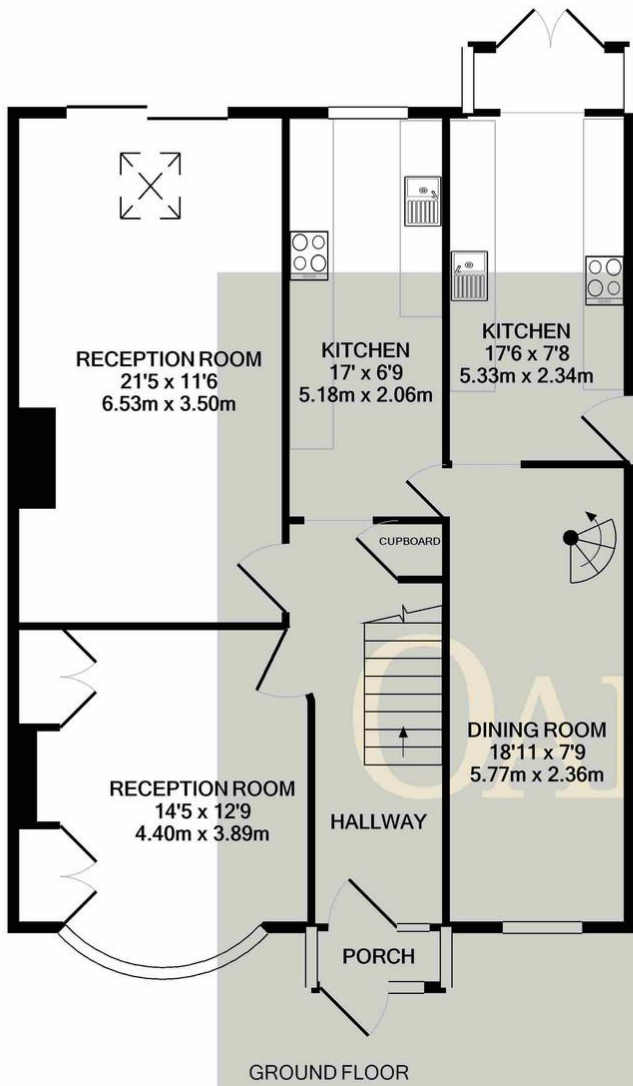
OAKHILL

Woodlands Road, Isleworth – TW7

£899,950

Situated in the ever-popular Woodland's development, close to public transport, local schools, and amenities, this well presented semi detached four bedroom family home is offered to the market with no forward chain. The ground floor accommodation offers a good-sized front reception room with bay window which is currently used as a bedroom, large through reception room with direct access to the rear garden, two kitchens and dining room. The first floor offers three double bedrooms and two bathrooms. The loft has been converted to provide a fourth double bedroom with en-suite shower room and eaves storage. Externally the property offers driveway parking and a well presented large rear garden. The property also benefits from under floor heating, insulated walls, side access and access to WERFA and the communal facilities that come with it.





Whilst every attempt has been made to ensure the accuracy of the floor plan contained here, measurements of doors, windows, rooms and any other items are approximate and no responsibility is taken for any error, omission, or mis-statement. This plan is for illustrative purposes only and should be used as such by any prospective purchaser. The services, systems and appliances shown have not been tested and no guarantee as to their operability or efficiency can be given
Made with Metropix ©2023



Oakhill Estate Agents

6 South Street, Isleworth, TW7 7BG

