

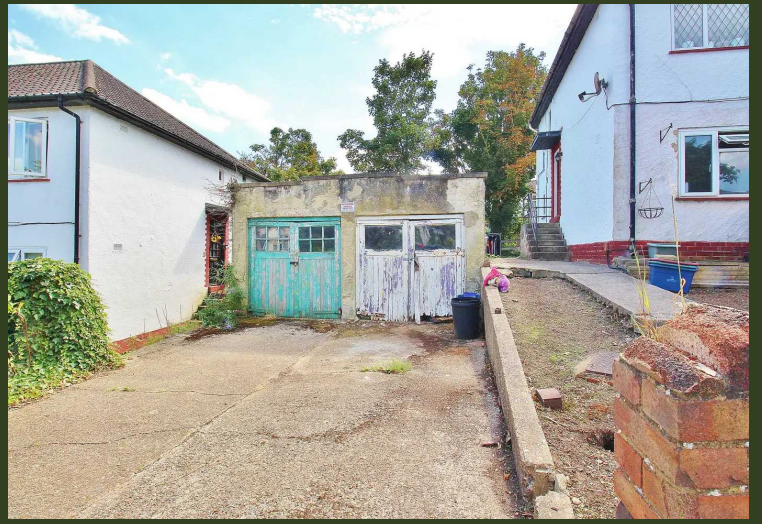


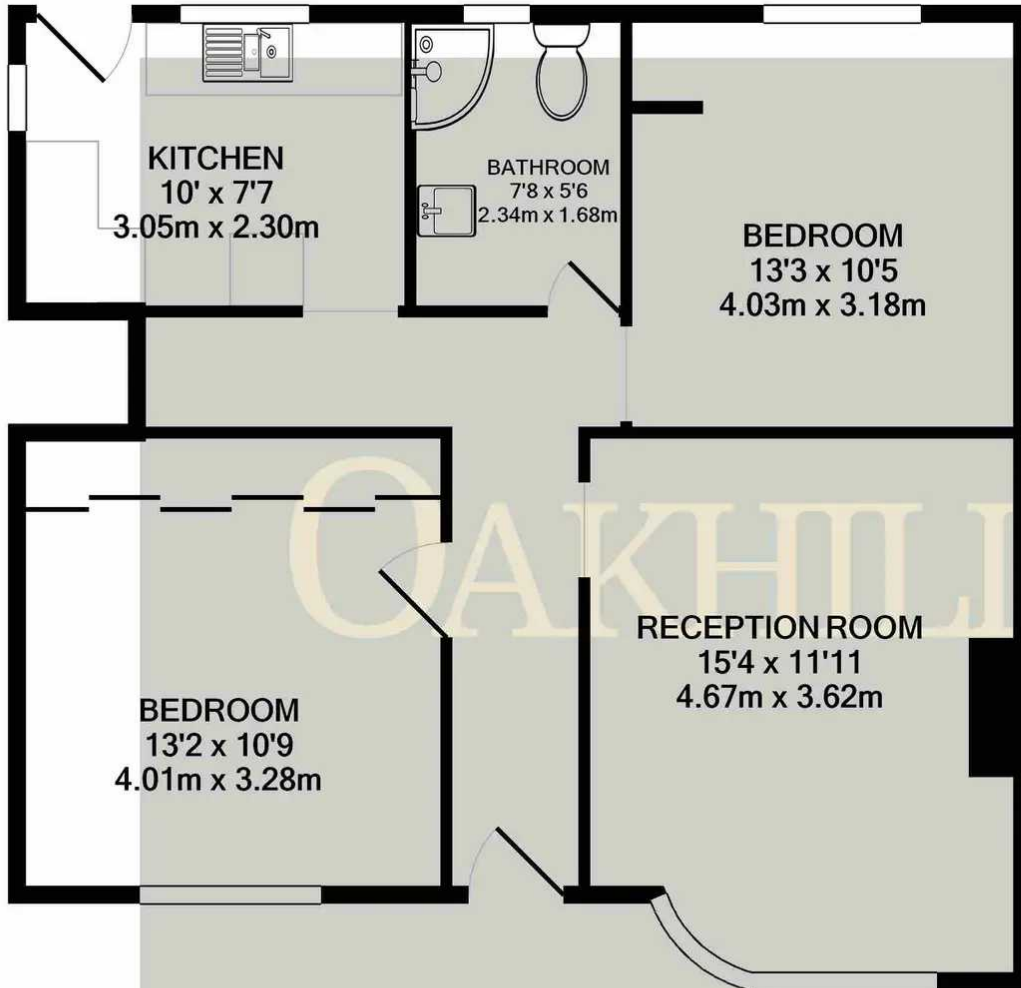
## Redesdale Gardens, Isleworth - TW7

£375,000 Leasehold

This two bedroom ground floor maisonette is situated within walking distance of Syon Lane train station, local schools and amenities. The perfect blank canvas, the property offers a master bedroom with built in wardrobes, second double bedroom, spacious reception room, separate kitchen and modern bathroom. The property also benefits from a large front garden, separate garage and driveway parking.

OAKHILL





Whilst every attempt has been made to ensure the accuracy of the floor plan contained here, measurements of doors, windows, rooms and any other items are approximate and no responsibility is taken for any error, omission, or mis-statement. This plan is for illustrative purposes only and should be used as such by any prospective purchaser. The services, systems and appliances shown have not been tested and no guarantee as to their operability or efficiency can be given  
Made with Metropix ©2024

OAKHILL

Oakhill Estate Agents

6 South Street, Isleworth, TW7 7BG

