

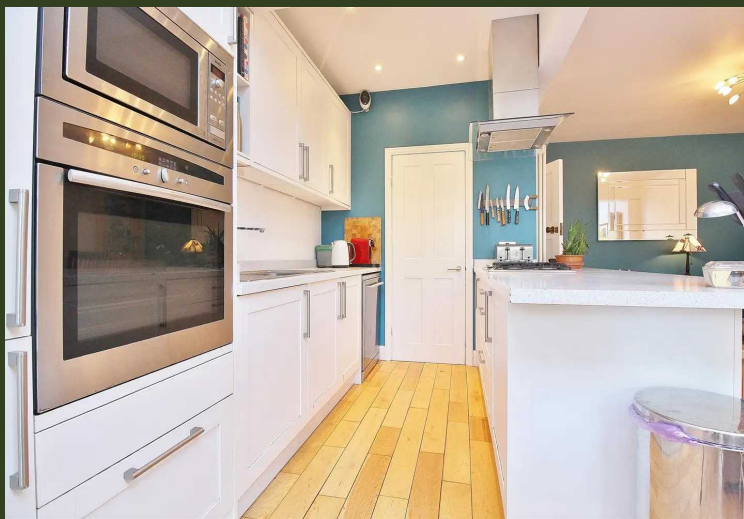


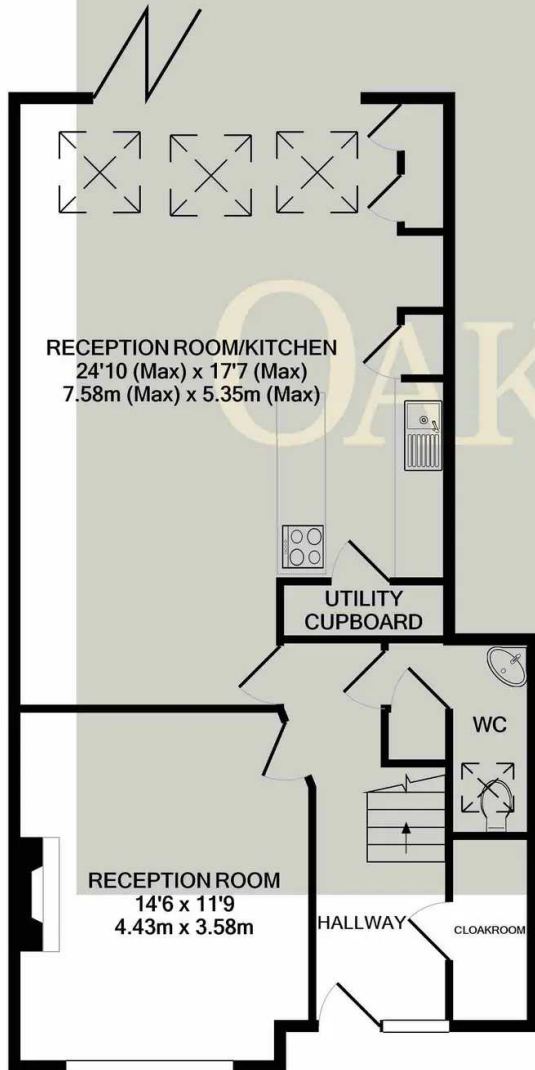
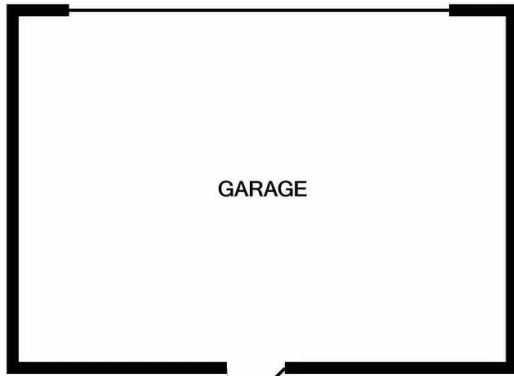
OAKHILL

Woodland Gardens, Isleworth - TW7

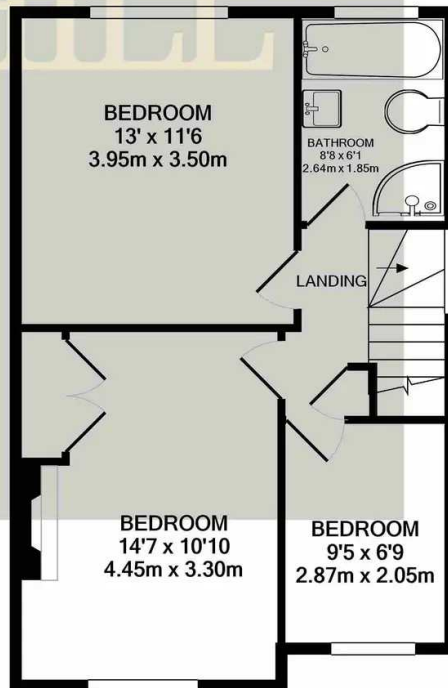
£750,000 Freehold

Situated in the ever popular Woodlands area of Isleworth, this well presented, semi-detached, three bedroom family home is offered to the market with no forward chain. Ideally located for local amenities, public transport and the best local schools, the property backs on to the WERFA Pavilion and the communal facilities which it has to offer. The ground floor accommodation has been extended at the rear to provide a bright spacious reception/dining room and open plan kitchen, separate front reception room with fireplace, downstairs wc and cloakroom. The first floor offers a lovely four-piece family bathroom, two double bedrooms and a good sized single bedroom. The property also benefits from off driveway parking, good sized west facing rear garden which gets plenty of sunlight, separate double garage, external bike storage, side access and ample internal storage.





GROUND FLOOR



1ST FLOOR

Whilst every attempt has been made to ensure the accuracy of the floor plan contained here, measurements of doors, windows, rooms and any other items are approximate and no responsibility is taken for any error, omission, or mis-statement. This plan is for illustrative purposes only and should be used as such by any prospective purchaser. The services, systems and appliances shown have not been tested and no guarantee as to their operability or efficiency can be given
Made with Metropix ©2023



Oakhill Estate Agents

6 South Street, Isleworth, TW7 7BG

