



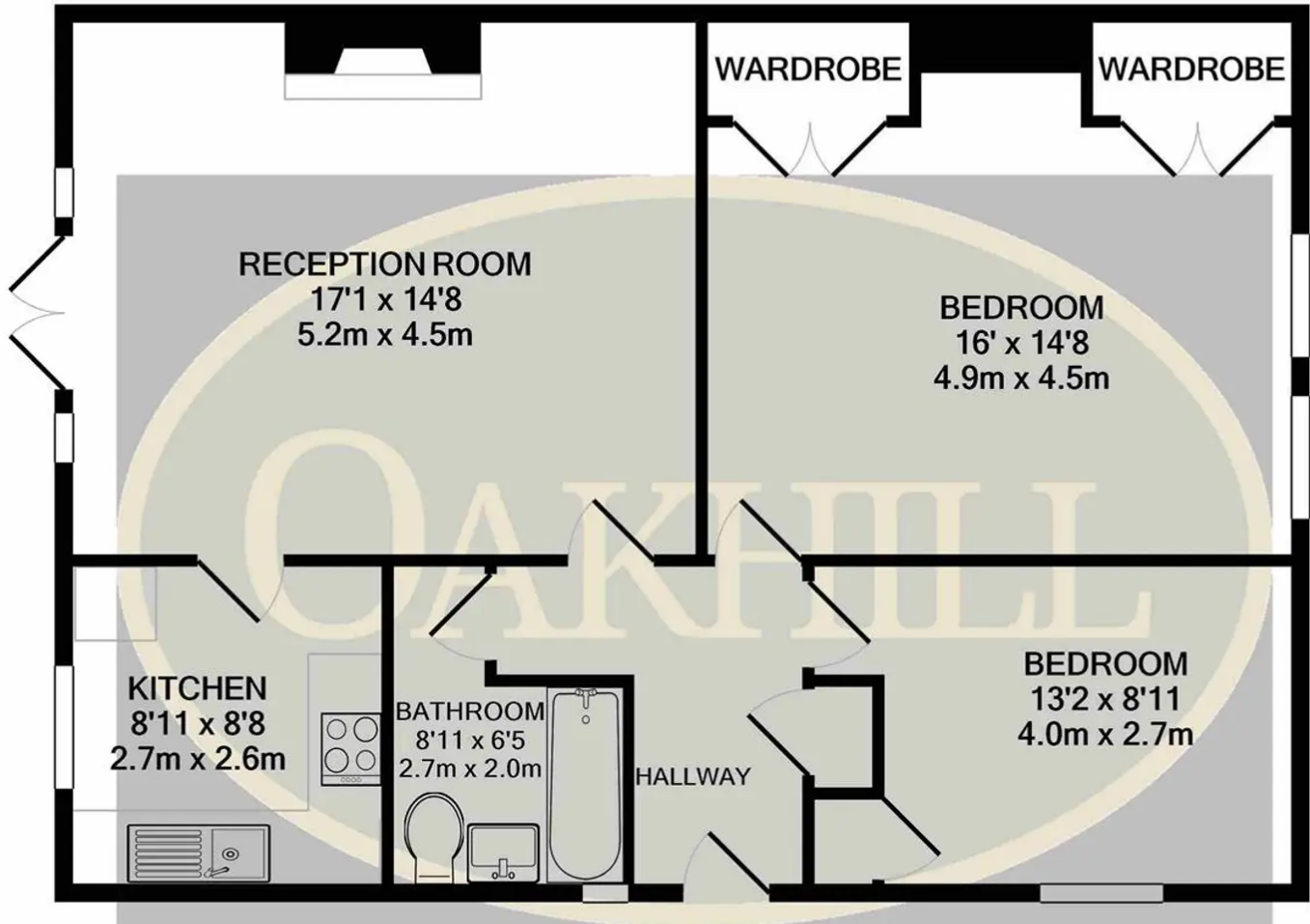
The Grove, Isleworth – TW7

£450,000 Leasehold

This well presented, spacious two double bedroom lower ground floor apartment is situated on one of Isleworth's most desirable roads. Offered to the market with no forward chain the property is ideally located for access to Isleworth train station, local schools and amenities. The property offers a spacious master bedroom with built in wardrobes, second double bedroom with a built in wardrobe, large reception room offering direct access to the private garden, separate kitchen, and a bathroom. Further benefits include access to a large communal garden, double glazing, gas central heating and long lease in excess of 900 years.

OAKHILL





Whilst every attempt has been made to ensure the accuracy of the floor plan contained here, measurements of doors, windows, rooms and any other items are approximate and no responsibility is taken for any error, omission, or mis-statement. This plan is for illustrative purposes only and should be used as such by any prospective purchaser. The services, systems and appliances shown have not been tested and no guarantee as to their operability or efficiency can be given

Made with Metropix ©2020

OAKHILL

Oakhill Estate Agents

6 South Street, Isleworth, TW7 7BG

