



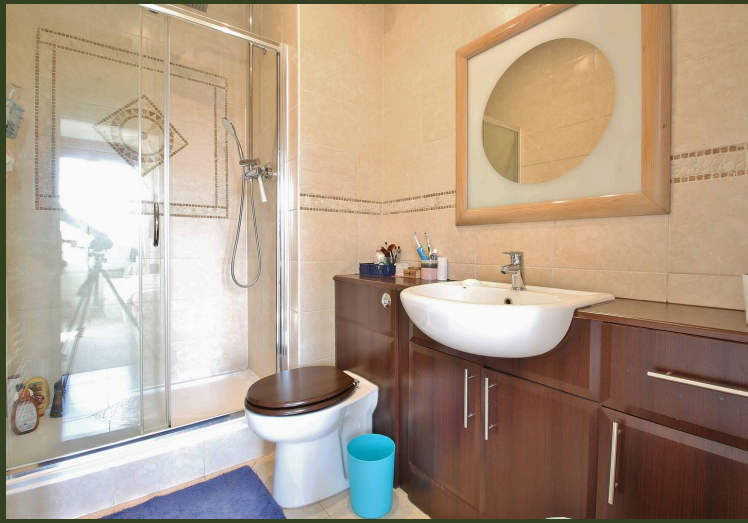
OAKHILL

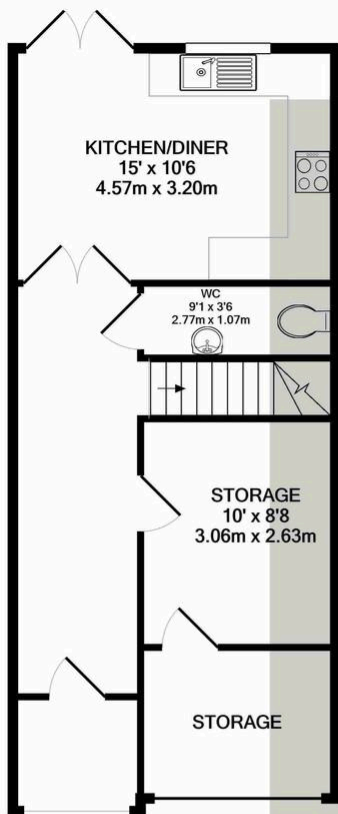
Elizabeth Gardens, Isleworth – TW7

Guide Price £725,000 Freehold Freehold

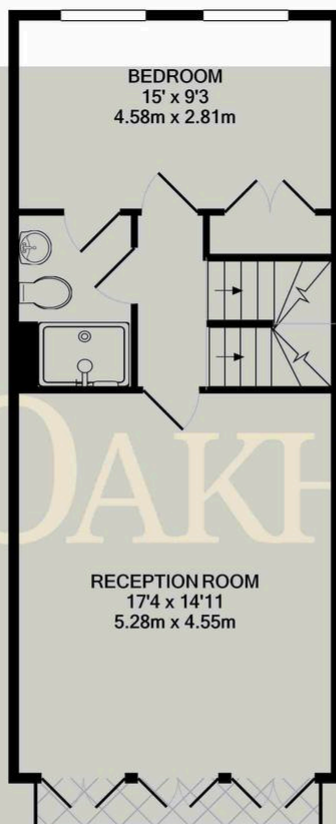
This spacious four bedroom townhouse is situated in a popular modern development in the heart of Old Isleworth.

Ideally located for access to a range of excellent local schools, Old Deer Park, and the shops and cafes of Old Isleworth, the property is offered with no forward chain. Split over three floors the downstairs accommodation offers a welcoming hallway, integral garage which has been split into two storage rooms, downstairs WC and a spacious kitchen/diner with direct access to the private rear garden. through to fitted kitchen with room for dining, offering direct access to private rear south facing garden. The first floor consists of spacious living area with Juliette balcony, large double bedroom with a Jack and Jill shower room. The top floor offers a master bedroom with built-in storage and en-suite shower room, third double bedroom, a good sized single bedroom and modern family bathroom. The property also benefits from driveway parking.

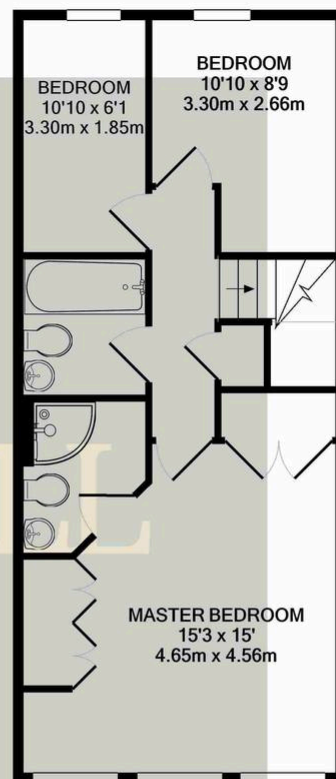




GROUND FLOOR



1ST FLOOR



2ND FLOOR



Whilst every attempt has been made to ensure the accuracy of the floor plan contained here, measurements of doors, windows, rooms and any other items are approximate and no responsibility is taken for any error, omission, or mis-statement. This plan is for illustrative purposes only and should be used as such by any prospective purchaser. The services, systems and appliances shown have not been tested and no guarantee as to their operability or efficiency can be given

Made with Metropix ©2024

OAKHILL

Oakhill Estate Agents
6 South Street, Isleworth, TW7 7BG

