



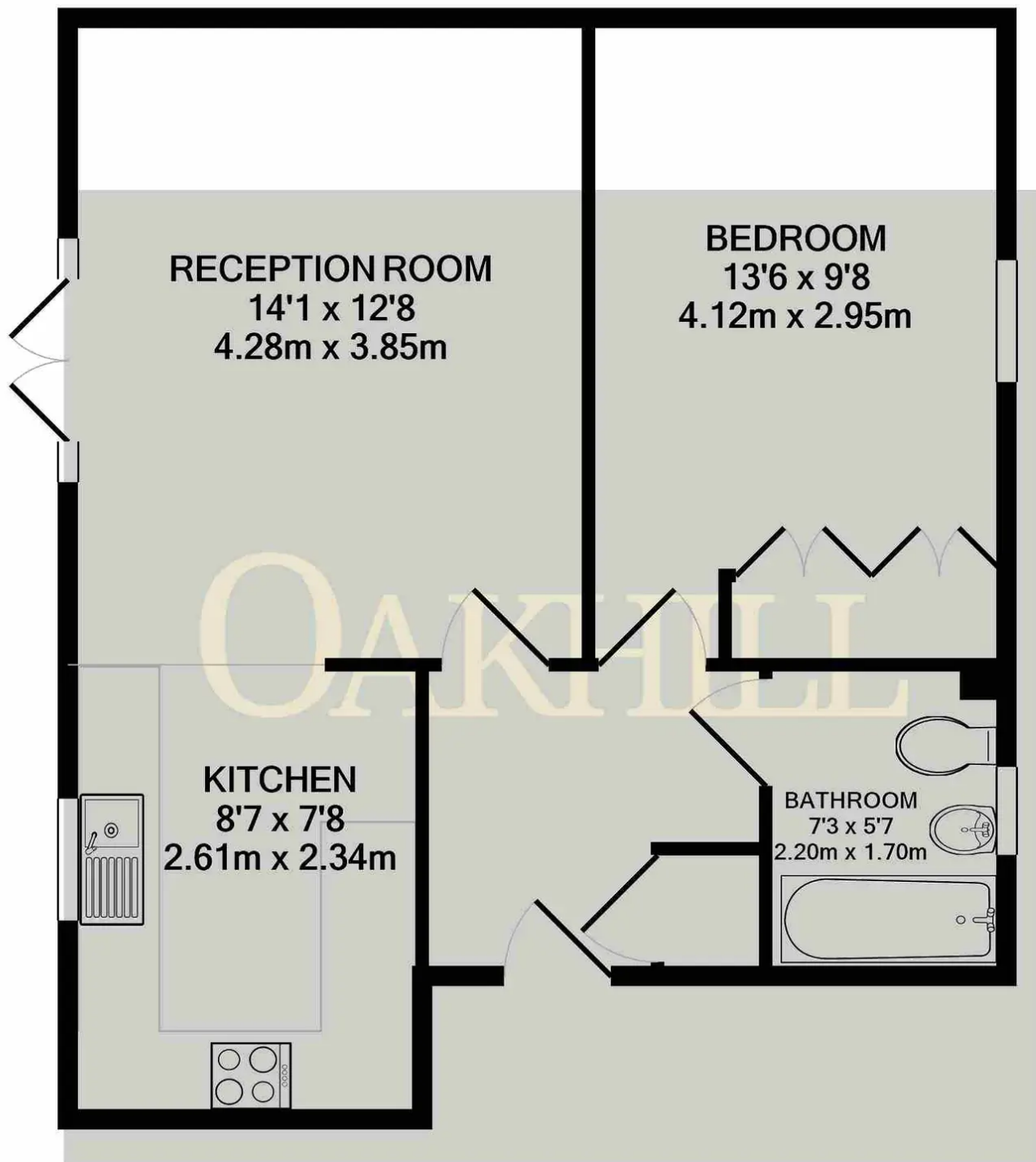
## White Lodge Close, Isleworth – TW7

£280,000 Leasehold

Situated in a modern development, close to public transport, amenities and the Thames Riverside, this well presented ground floor one bedroom apartment is offered to the market. The property features a bright spacious reception/dining room with French doors leading out to a patio and communal gardens, fitted kitchen, double bedroom with built in wardrobes and a modern bathroom. The property also benefits from ample internal storage, allocated parking, double glazing and gas central heating.

OAKHILL





Whilst every attempt has been made to ensure the accuracy of the floor plan contained here, measurements of doors, windows, rooms and any other items are approximate and no responsibility is taken for any error, omission, or mis-statement. This plan is for illustrative purposes only and should be used as such by any prospective purchaser. The services, systems and appliances shown have not been tested and no guarantee as to their operability or efficiency can be given

Made with Metropix ©2024

OAKHILL

Oakhill Estate Agents

6 South Street, Isleworth, TW7 7BG

