

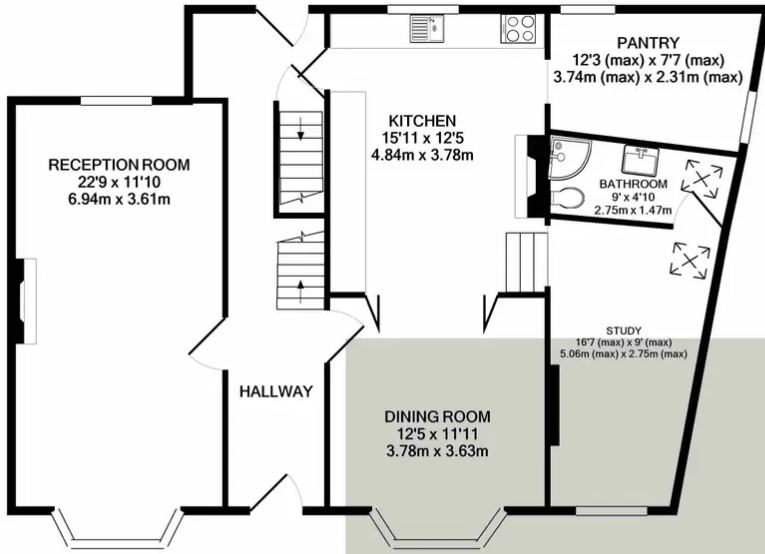


## 59 Woodlands Road, Isleworth – TW7 6JT

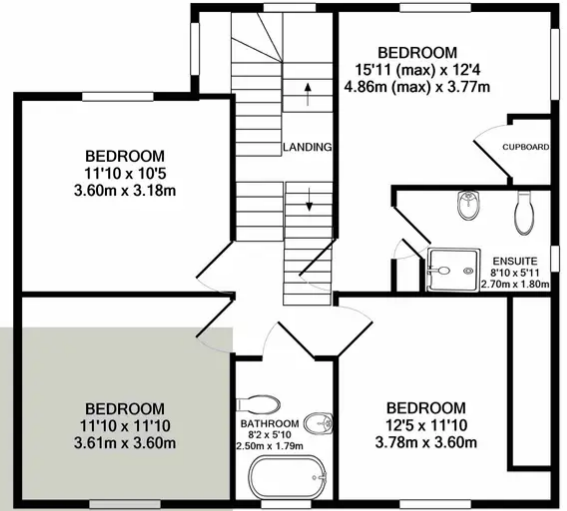
£1,490,000 Freehold

An opportunity to purchase a beautiful six bedroom detached period family home with a sizable plot, located in the ever popular Woodlands area of Isleworth. The accommodation is arranged over four floors and provides excellent and adaptable living space throughout. The ground floor is accessed via a stunning welcoming hallway and features a large reception room with bay window and fireplace, dining room, spacious kitchen with pantry, home office and a modern shower room. The first floor offers a modern family bathroom and four spacious double bedrooms, one of which includes a modern en-suite. The second floor comprises two large double bedrooms and a soon to be fitted new bathroom. The basement level features four large rooms inclusive of a laundry room, large garage and two store rooms. Externally the property offers a stunning mature rear garden, driveway parking and side access. Woodlands Road is located within a short distance of Isleworth station, shops and a number of good schools. Properties of this calibre rarely come to the market, so please contact to arrange a viewing

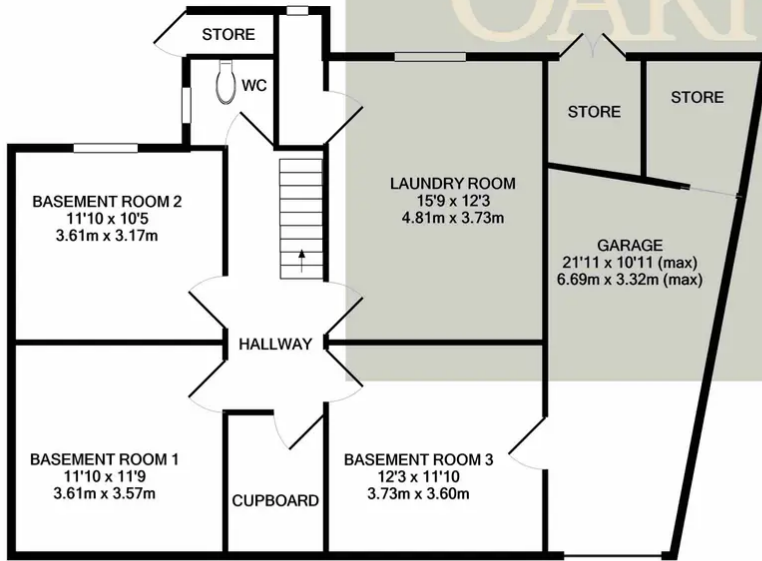




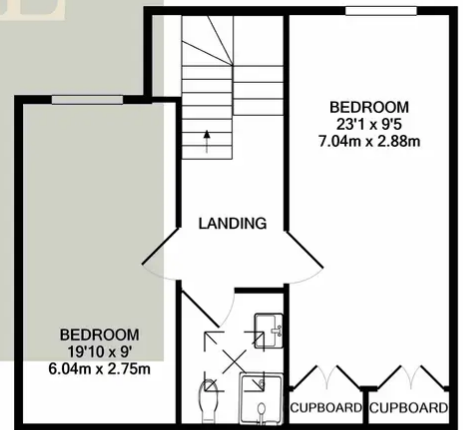
GROUND FLOOR



1ST FLOOR



BASEMENT LEVEL



2ND FLOOR

# OAKHILL

Whilst every attempt has been made to ensure the accuracy of the floor plan contained here, measurements of doors, windows, rooms and any other items are approximate and no responsibility is taken for any error, omission, or mis-statement. This plan is for illustrative purposes only and should be used as such by any prospective purchaser. The services, systems and appliances shown have not been tested and no guarantee as to their operability or efficiency can be given.  
Made with Metropix ©2024



OAKHILL