

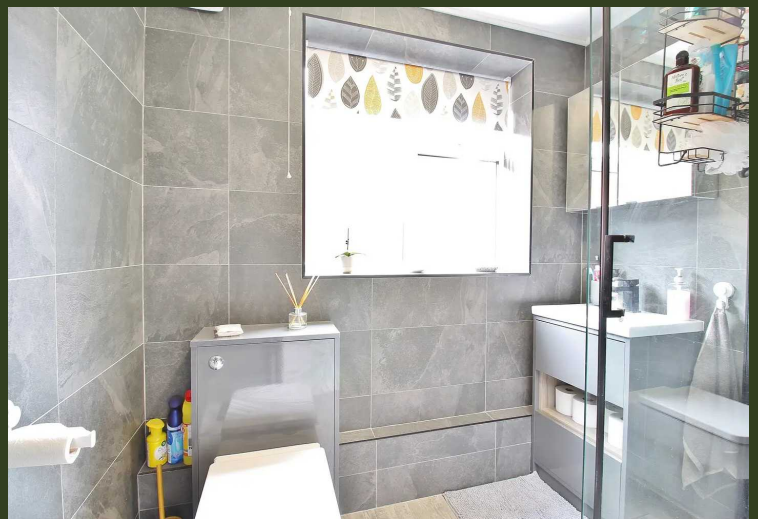


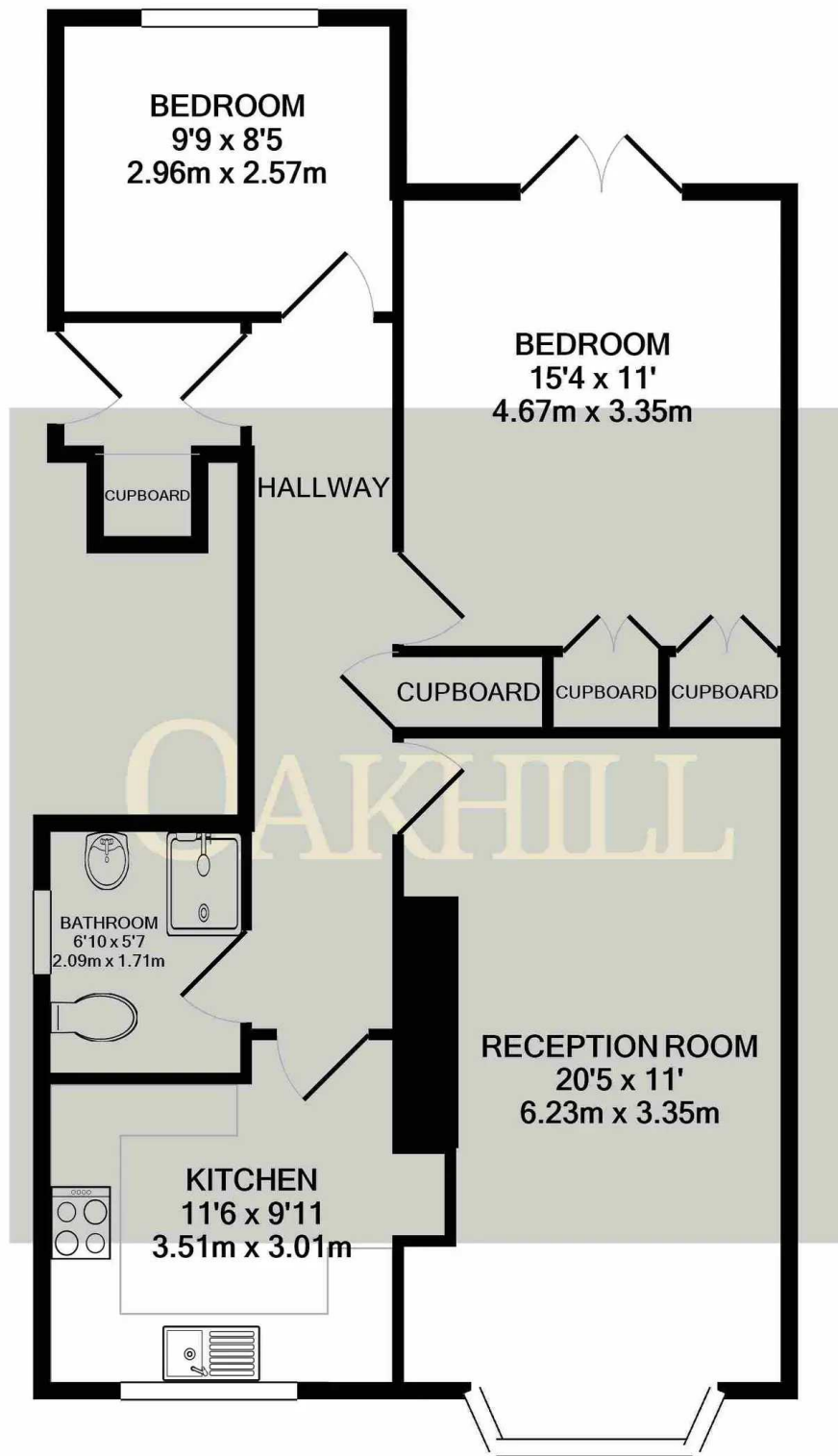
Thornbury Road, Isleworth, TW7

£550,000 Leasehold

This beautifully presented two double bedroom ground floor maisonette is located on a prime residential road, close to the picturesque Osterley Park, Osterley tube station, local schools and amenities. The property has been finished to a high standard through out and offers a spacious hallway, master bedroom with built in wardrobes and French doors opening onto a private decked veranda, second double bedroom, luxury shower room, modern fitted kitchen with integrated appliances and a spacious reception room with bay window. Externally the property offers driveway parking for at least two cars, private landscaped rear garden and a detached garage/studio. The property also benefits from a long lease, gas central heating and new double glazing throughout the property.

OAKHILL





Whilst every attempt has been made to ensure the accuracy of the floor plan contained here, measurements of doors, windows, rooms and any other items are approximate and no responsibility is taken for any error, omission, or mis-statement. This plan is for illustrative purposes only and should be used as such by any prospective purchaser. The services, systems and appliances shown have not been tested and no guarantee as to their operability or efficiency can be given

Made with Metropix ©2024



Oakhill Estate Agents

6 South Street, Isleworth, TW7 7BG

