



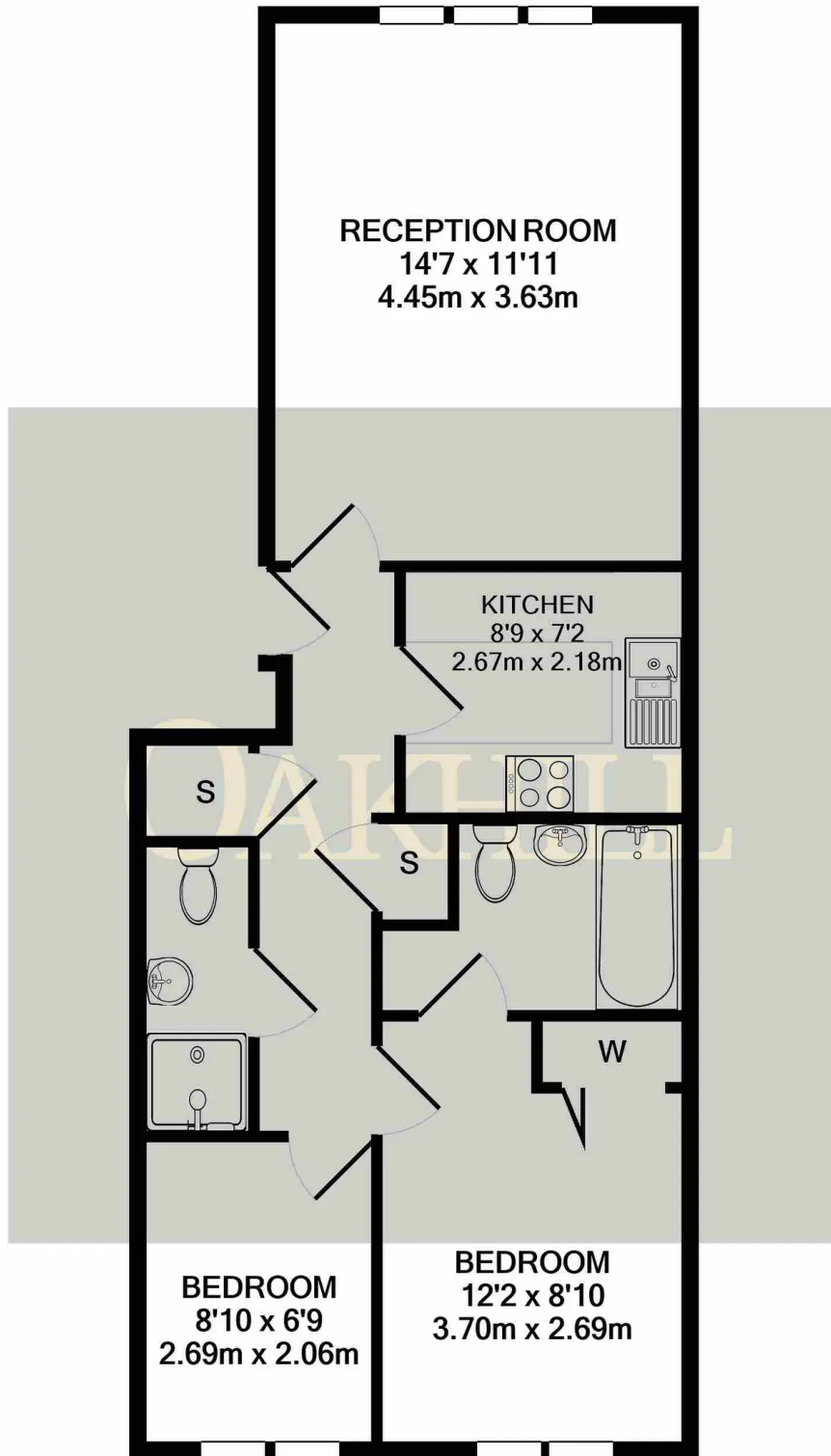
Hillary Drive, Isleworth, TW7 7EG

£260,000 Leasehold

Located just off Twickenham Road, with access to excellent transport links, local schools and amenities this two bedroom, first floor apartment is offered to the market with no forward chain. Set in gated development, the property offers a master bedroom with en suite bathroom, second bedroom, separate shower room, large reception room and kitchen. The property also benefits from allocated parking, well kept communal areas and a phone entry system.

OAKHILL





Whilst every attempt has been made to ensure the accuracy of the floor plan contained here, measurements of doors, windows, rooms and any other items are approximate and no responsibility is taken for any error, omission, or mis-statement. This plan is for illustrative purposes only and should be used as such by any prospective purchaser. The services, systems and appliances shown have not been tested and no guarantee as to their operability or efficiency can be given
 Made with Metropix ©2024



Oakhill Estate Agents

6 South Street, Isleworth, TW7 7BG

