



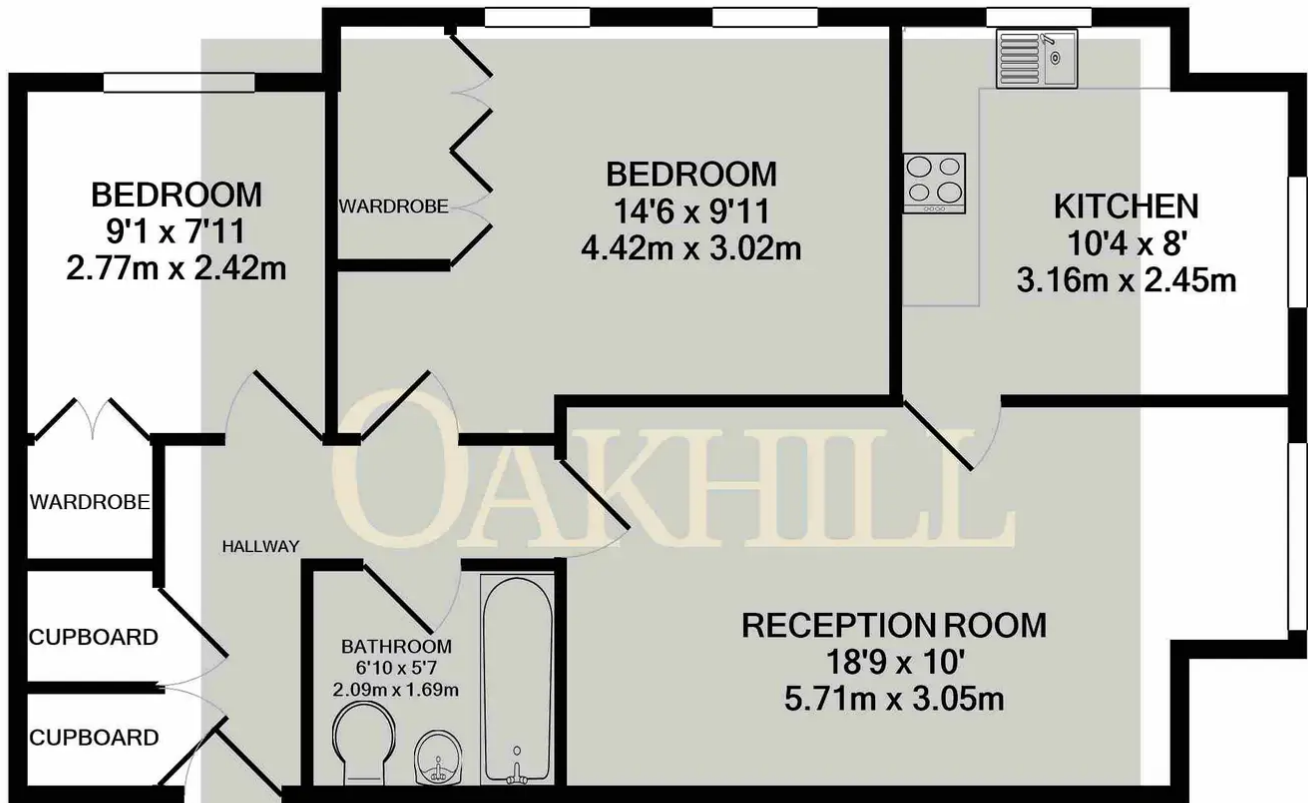
Jubilee Court, Bristow Road, TW3 1UP

£325,000 Leasehold

Situated in a gated development, within a short walk of Hounslow town centre and a range of public transport options, this well presented two double bedroom, ground floor apartment is offered to the market with no forward chain. The accommodation consists of a welcoming hallway, large double bedroom with built in wardrobe, second double bedroom with built in wardrobe, spacious reception room, separate kitchen and family bathroom. The property also benefits from ample internal storage, allocated parking, well kept communal areas and access to communal gardens.

OAKHILL





Whilst every attempt has been made to ensure the accuracy of the floor plan contained here, measurements of doors, windows, rooms and any other items are approximate and no responsibility is taken for any error, omission, or mis-statement. This plan is for illustrative purposes only and should be used as such by any prospective purchaser. The services, systems and appliances shown have not been tested and no guarantee as to their operability or efficiency can be given

Made with Metropix ©2024

OAKHILL

Oakhill Estate Agents

6 South Street, Isleworth, TW7 7BG

